

R5325421

📍 Estepona

REF# R5325421 929.900 €

BEDS

3

BATHS

2

BUILT

283 m²

TERRACE

1 m²

Brand new and just completed, this exceptional sea-view residence is perfectly positioned beside Las Mesas Park in Estepona, only 2–3 minutes by car or around 10 minutes on foot to the marina, beaches, restaurants, cafés and town centre.

Beautifully designed for a relaxed coastal lifestyle, the apartment combines refined contemporary interiors with effortless indoor-outdoor living. Bright open-plan spaces flow directly onto an impressive oversized private terrace — a standout feature of the home and an extraordinary extension of the living space.

Created for long sun-filled days and warm evenings, the terrace offers generous room for outdoor lounging, dining, entertaining and year-round enjoyment, all enhanced by open sea views and tranquil green surroundings.

Set within a newly completed premium development, residents enjoy an exclusive collection of resort-style amenities including adult and children's swimming pools, a fully equipped gym, sauna and landscaped gardens.

IDILIQ

ESTATES

Private garage parking and a separate trastero/storage room are included.

Sophisticated yet effortless, this is an ideal permanent residence, elegant holiday escape or prime investment opportunity in one of Estepona's most desirable new addresses.

Features

Brand new / just completed

Beautiful sea views

Beside Las Mesas Park

Exceptional oversized private terrace

Adult and children's swimming pools

Fully equipped gym

Sauna

Private garage parking

Private trastero / storage room

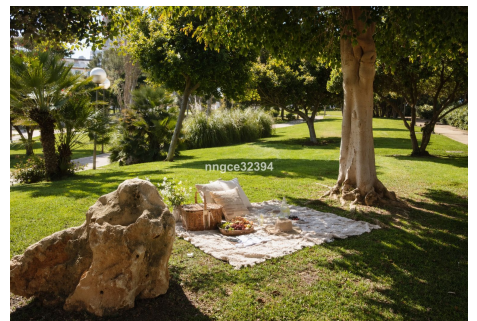
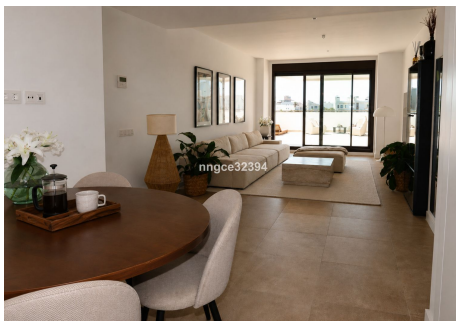
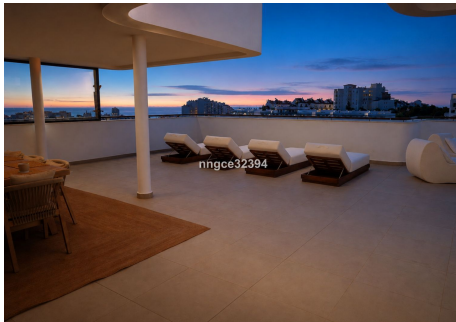
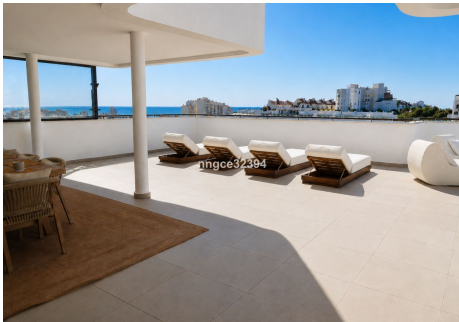
Lift access

10-minute walk to marina & beach

Close to shops, dining & amenities

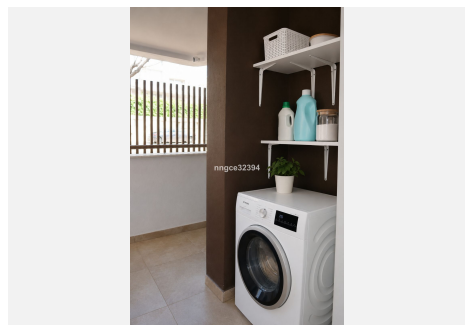
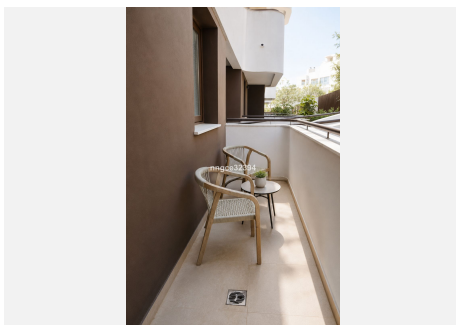
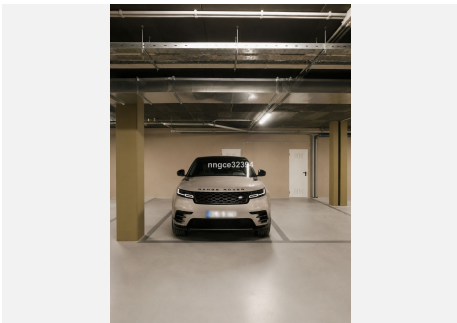
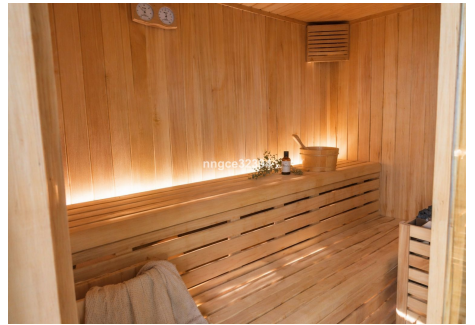
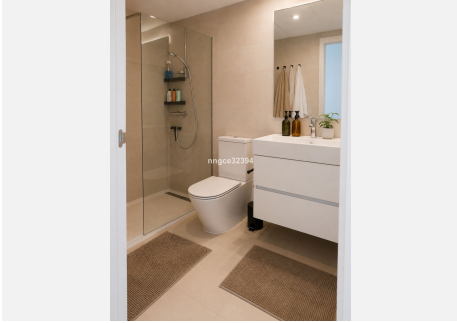
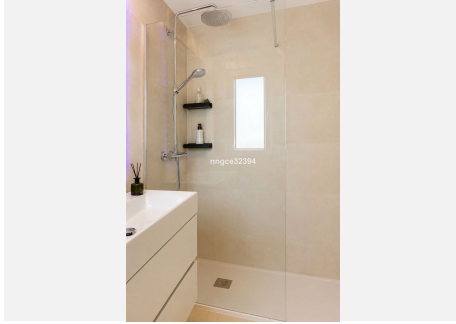
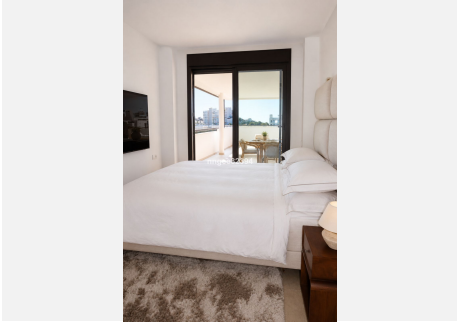
Ideal home, holiday retreat or investment

Modern Mediterranean luxury with sea views, resort amenities and one of Estepona's most lifestyle-driven locations.



IDILIQ

ESTATES



IDILIQ

ESTATES

