

IDILIQ

ESTATES



R4563199

 Benalmadena Pueblo

REF# R4563199 750.000 €

BEDS

2

BATHS

2

BUILT

96 m²

TERRACE

44 m²

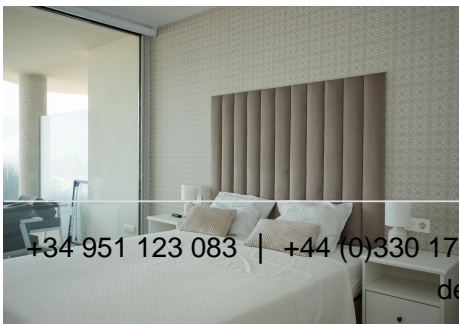
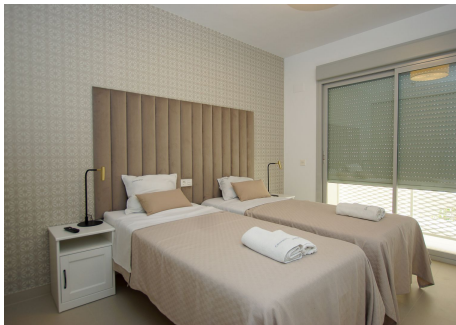
Luxurious apartment - Panoramic view - we would like to invite you to a new lifestyle, a home where illusion and the senses will be the protagonists. Only 15 minutes from the airport and just 5 minutes to the beach, situated close to Benalmadena pueblo and benefits from spectacular Mediterranean sea views. Live your dreams in this luxurious 2 bed apartment in one of the most sought-after new developments on the coast. Best location and an absolutely unobstructed panoramic sea view overlooking the full coast line including Fuengirola Bay. It's magic here - not just during the day but also at night time with the warmth glancing colored lights from Fuengirola city and surrounding areas. This large apartment is south facing and offers private terrace with plenty of space for socializing with friends and family in the outdoor lounge area, from where you can enjoy the sun all day long. The apartment consists of entrance and hallway and 2 large bedrooms with built-in wardrobes and electric blinds leading. From the guest bedrooms you enter out to a hallway with guest bathroom and a open plan kitchen and living room with floor to ceiling sliding windows that leads out to the large downstairs terrace. Furthermore this apartment equipped with best materials and high quality appliances and fully furnished and equipped with electrical appliances from Siemens. The penthouse comes also with complete underfloor heating, with modern built-in air conditioning hot and cold with Airzone, video intercom, and a pre-installation alarm system and includes two parking spaces

+34 951 123 083 | +44 (0)330 179 8687 | info@idiliqestates.com Local 28, Edificio D, Centro de Negocios Puerta de Banús, N-340, Km 175, 29660 Nueva Andlucia

IDILIQ

ESTATES

(underground parking) and one storage room. The apartment has 2 large bedrooms, 2 bathrooms and a toilet with toilets from Villeroy and Bosch and taps with Hasnagrohe, living room and kitchen (equipped with siemens equipment) of 37 m2, laundry equipped with washing machine, dryer and athermia system for hot water. The laundry room is 4.50 m2 and the terrace is 44 m2. We are talking about floor-to-ceiling windows. Features are top notch The price includes 2 parking spaces of approximately 12.50 m2 each and a storage room of 6.5 m2. Enjoy full wellness with a fitness centre with high-end Technogym machines, equipped pilates room, spa, Turkish bath, sauna, chillout area and impressive 90 m2 infinity pool and salt water. As an owner of this apartment you can also enjoy 2 outdoor pools, 1 indoor pool, spa, saunas & gym, several elevators and a shopping area on your doorstep, walking distance to Altos del Higuera shopping center and Benalmádena Pueblo. Málaga Airport in proximity only a very short drive away



+34-951 123 083 | +44 (0)330 179 8687 | info@idiliqestates.com Local 28, Edificio D, Centro de Negocios Puerta de Banús, N-340, Km 175, 29660 Nueva Andalucía

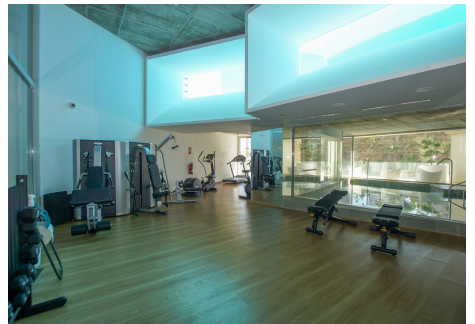
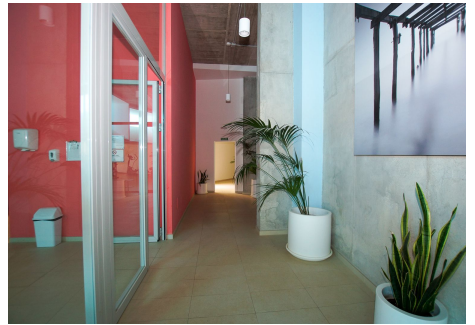
IDILIQ

ESTATES



IDILIQ

ESTATES



IDILIQ

ESTATES

