



R5046922

📍 Monda

REF# R5046922 1.190.000 €

BEDS

7

BATHS

6

BUILT

600 m<sup>2</sup>

PLOT

10000 m<sup>2</sup>

TERRACE

150 m<sup>2</sup>

Eng.: A biodynamic farm 20 minutes from Marbella, in a unique natural setting, with a river and mineral water spring at the foot of the farm, surrounded by trees. This self-sufficient farm boasts a wide variety of fruit trees and an organic garden.

It consists of a recently renovated main house with underfloor and aerothermal heating, designed in a unique style, consisting of 3 bedrooms and terraces. A second house, with a very charming natural style and 2 fireplaces, has 2 bedrooms. It also has 3 tiny homes or cabins, making it a relaxing retreat and a profitable business.

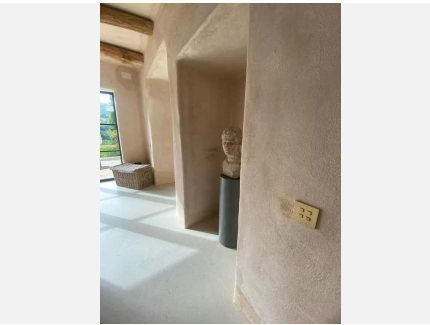
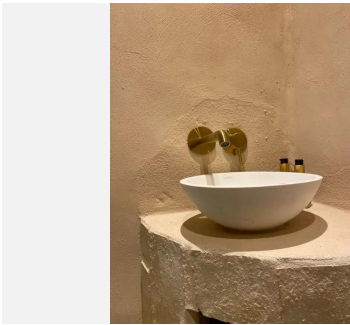
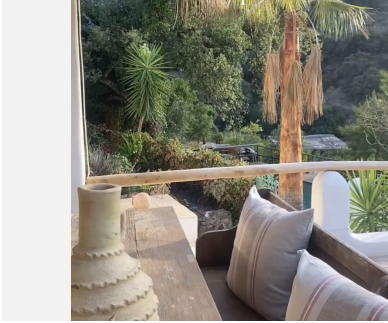
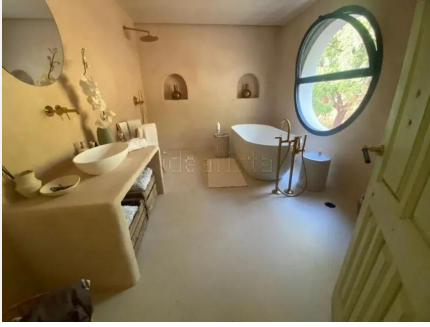
Total capacity: 20 people

It also has a natural pool and small natural pools, an outdoor yoga room, etc.

And its main value is the space itself, its biodiversity, and its beauty, which generate an easily noticeable well-being.

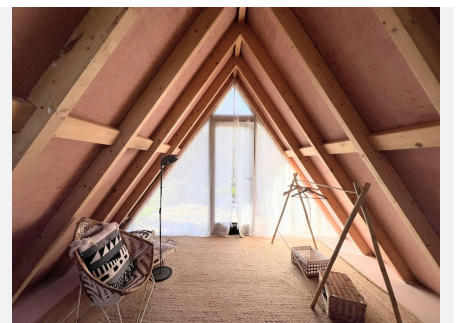
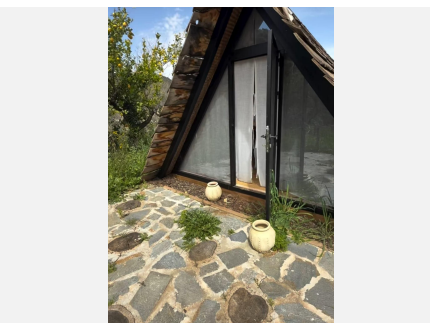
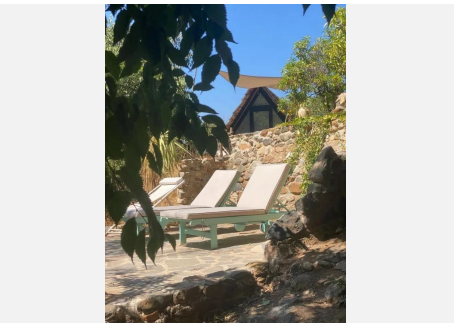
# IDILIQ

ESTATES



# IDILIQ

ESTATES



# IDILIQ

ESTATES

