

IDILIQ

ESTATES



R4990888

📍 Manilva

REF# R4990888 262.500 €

BEDS

2

BATHS

2

BUILT

70 m²

PLOT

20 m²

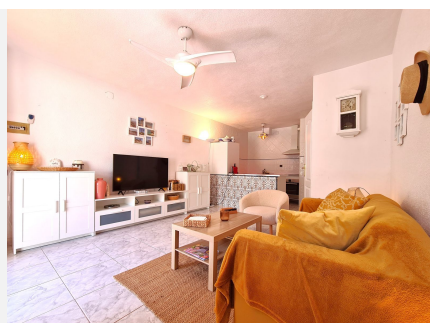
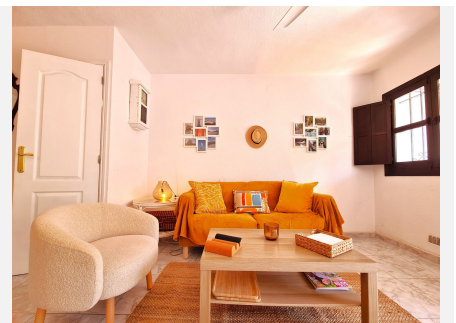
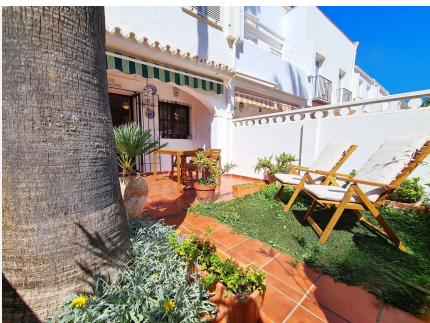
TERRACE

40 m²

FANTASTIC 2-BEDROOM TOWNHOUSE WITH PRIVATE GARDEN 50 METERS FROM THE BEACH!!
The house is located on the second line of the beach, just steps from the beautiful coastal path that connects the entire Costa del Sol. Sabinillas and the prestigious Sotogrande are just a 5-minute drive away, where you'll find supermarkets, restaurants, and shops. The property is south-facing and has a beautiful private garden with a porch that serves as the entrance to the house, which is spread over two floors plus the solarium. On the ground floor, there is a living-dining room with a fully equipped open-plan kitchen and a guest toilet. On the first floor, there are two bedrooms: a master bedroom and a single bedroom, as well as a shared bathroom equipped with a shower. On the top floor, there is a solarium with partial sea views and a room that is currently used as a laundry room. The house enjoys beautiful gardens and a communal pool. A GREAT OPPORTUNITY TO EXPERIENCE THE LUXURY OF BEACHFRONT LIVING! WE RECOMMEND A VIEWING!

IDILIQ

ESTATES



IDILIQ

ESTATES



IDILIQ

ESTATES



IDILIQ

ESTATES

