



R5131075

📍 Riviera del Sol

REF# R5131075 285.500 €

BEDS

2

BATHS

2

BUILT

96 m²

TERRACE

10 m²

South-facing duplex penthouse located in a popular residential area 1.5 km from the beach. This bright property offers sea views, a garden, and a pool, combining comfort, privacy, and an unbeatable location. It features a fitted kitchen, a living room with access to a private terrace, a sun terrace for a chill-out area and barbecue, a laundry room, and marble floors. It includes a private parking space and access to the communal pool and garden.

Located close to amenities, leisure areas, restaurants, shops, and cafes, and just minutes from renowned golf courses. It features hot/cold air conditioning, a 24-hour security system in the complex, and a bus stop. An ideal property both as a permanent residence and as a profitable investment, perfect for enjoying the Mediterranean lifestyle.

Duplex Penthouse, Walking distance to beach, Fitted Kitchen, Parking: Private, Communal Pool, Garden: Community, Facing: South

Views: Garden, Pool, Sea

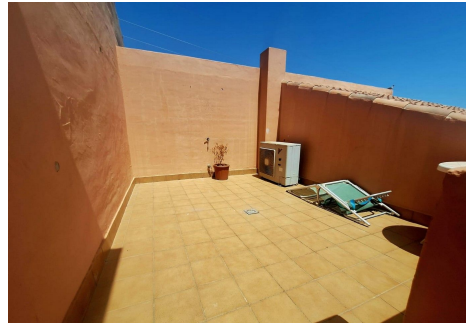
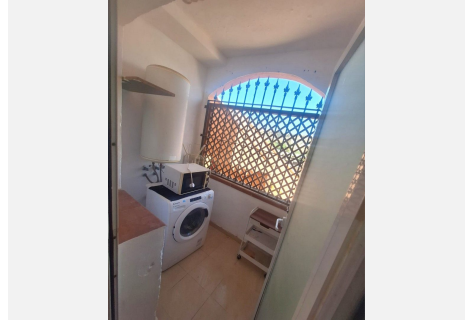
Features: 24 hrs Security System, 5-10 minutes to Golf Course, Air Conditioning Hot/Cold, Close to all Amenities, Community Garden, Community Pool, Conveniently Situated for Golf, Fitted Kitchen, Garden and

+34 951 123 083 | +44 (0)330 179 8687 | info@idiliqestates.com Local 28, Edificio D, Centro de Negocios Puerta de Banús, N-340, Km 175, 29660 Nueva Andlucia

IDILIQ

ESTATES

Pool View, Laundry room, Marble Floors, Near amenities, Near Transport, Parking, Popular Urbanisation, Private Terrace, Sea Views, Solarium, Walking distance to beach, Walking Distance to Cafés, Walking distance to rest., Walking distance to shops



IDILIQ

ESTATES

