

R4893397

📍 La Quinta

REF# R4893397 2.998.000 €

BEDS

4

BATHS

4

BUILT

600 m²

PLOT

1150 m²

Contemporary Villa in Lomas de La Quinta, Benahavís 4 Bedrooms | 4 Bathrooms | Panoramic Sea and Mountain Views Villa Lea is a stunning contemporary residence located in the exclusive gated community of Lomas de La Quinta. Offering a perfect balance between modern design, privacy, and convenience, this villa is an ideal retreat for those seeking a tranquil lifestyle close to Marbella's finest amenities. Key features:

- Spacious open-plan living areas with high ceilings and seamless flow between spaces
- Four double bedrooms, each with dressing rooms and ensuite bathrooms
- Expansive terraces with breathtaking views of the sea and mountains
- Private garden with a large heated pool for year-round enjoyment
- Underground garage with space for two large vehicles, plus additional guest parking

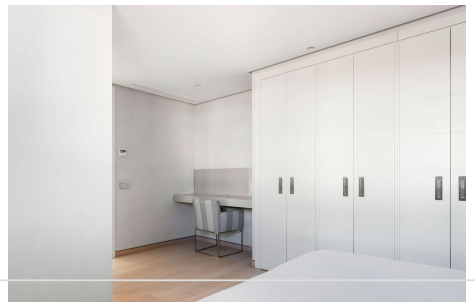
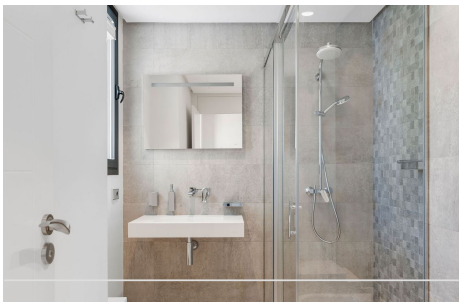
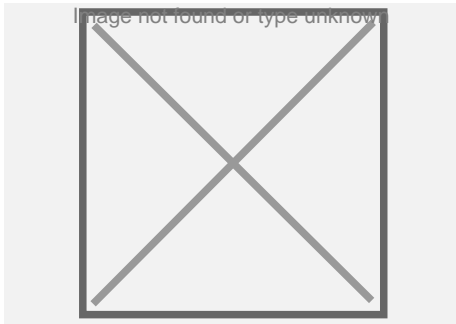
Interior highlights: The ground floor welcomes you with a bright and airy layout featuring two lounges, both equipped with integrated TVs and stoves, and a dining room connected to a fully equipped kitchen. This level also includes a guest bathroom and a double bedroom with a dressing room and ensuite bathroom, all with direct access to the terrace. The upper floor hosts three generously sized bedrooms, each with ensuite bathrooms and dressing rooms. The master suite is a true sanctuary, featuring a private terrace with stunning sea views. Additional spaces and potential: The basement includes multiple storage rooms and an underground garage. Beneath the pool, an untapped area offers endless possibilities for customization, such as adding a fifth bedroom, a home

+34 951 123 083 | +44 (0)330 179 8687 | info@idiliqestates.com Local 28, Edificio D, Centro de Negocios Puerta de Banús, N-340, Km 175, 29660 Nueva Andlucia

IDILIQ

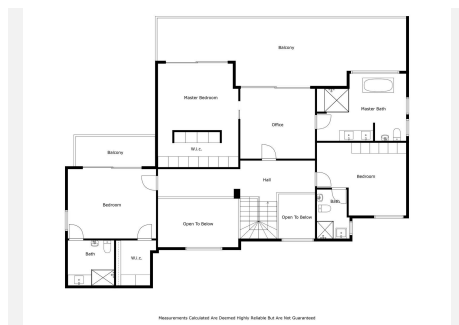
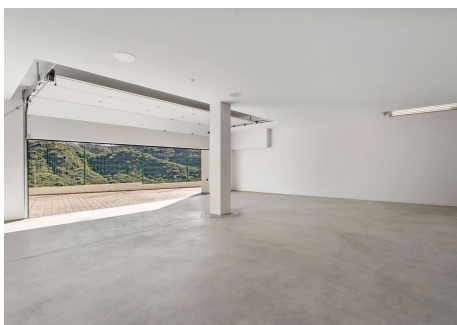
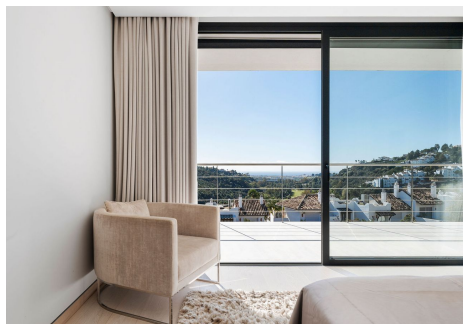
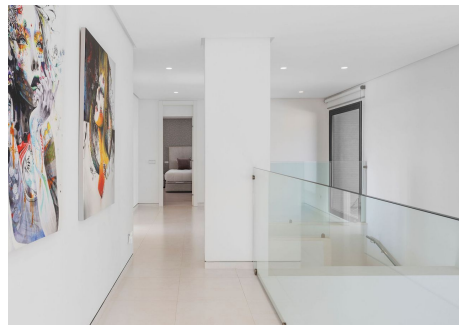
ESTATES

cinema, or a gym. Outdoor living: Villa Lea's outdoor spaces are designed for relaxation and entertainment, with expansive terraces, lush landscaping, and a heated pool set against the backdrop of panoramic mountain and sea views. Prime location: • 2 minutes from Nueva Andalucía • 10 minutes from San Pedro de Alcántara and Puerto Banús • 15 minutes from the exclusive Puente Romano Villa Lea is perfectly positioned for easy access to top restaurants, golf courses, and the vibrant Marbella lifestyle while offering the seclusion and comfort of a private retreat. This is more than just a home—it's an opportunity to embrace luxury living in one of the Costa del Sol's most sought-after locations. For more information or to arrange a visit, please contact us.

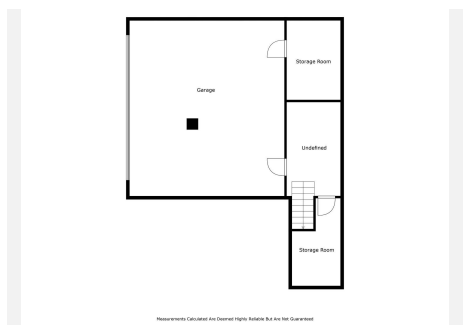


IDILIQ

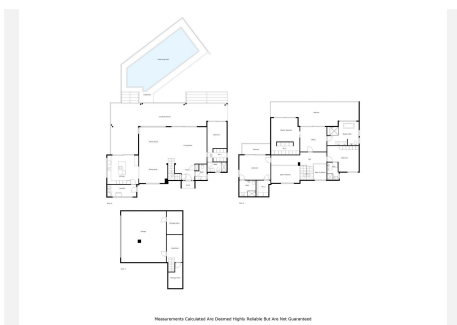
ESTATES



Measurements Calculated And Overlaid Right Relative But Are Not Guaranteed



Measurements Calculated And Overlaid Right Relative But Are Not Guaranteed



Measurements Calculated And Overlaid Right Relative But Are Not Guaranteed