



R5196895

 Costalita

REF# R5196895 680.000 €

BEDS

3

BATHS

2.5

BUILT

169 m<sup>2</sup>

PLOT

36 m<sup>2</sup>

TERRACE

29 m<sup>2</sup>

## Elegant Beachside Townhouse in Sought-After Costalita

This beautiful corner townhouse enjoys an exceptional location, just a short stroll from the beach and all local amenities. Nestled within an exclusive, gated community, it offers the perfect blend of coastal living, modern comfort, and Mediterranean charm.

The property welcomes you with a bright and spacious open-plan living and dining area, complete with a contemporary kitchen and stylish breakfast bar — ideal for relaxed family meals or entertaining friends. Large sliding doors lead out to a private terrace overlooking the beautiful communal gardens.

On the lower level, the elegant master suite features a generous walk-in wardrobe and a luxurious bathroom with both bathtub and shower. A section of the adjoining patio has been enclosed to create a practical home office — perfect for remote working. The bedroom opens directly onto a private terrace and garden, with access to the beautifully landscaped communal areas and swimming pool.

Upstairs, there are two further well-proportioned bedrooms sharing a modern family bathroom, while a guest WC is conveniently located near the living area.

Additional features include a private garage and ample on-street parking within the community.

This property offers an ideal setting for year-round living or as a wonderful holiday home. With the beach,   
 +34 951 123 083 | +34 (0)330 179 8687 | [info@idiliqestates.com](mailto:info@idiliqestates.com) Local 28, Edificio D, Centro de Negocios Puerta de Banús, N-340, Km 175, 29660 Nueva Andlucia

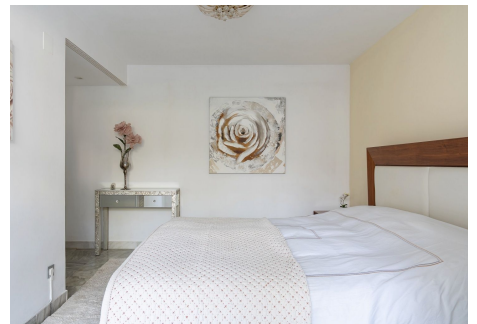
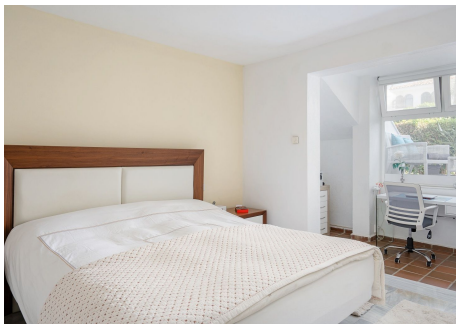
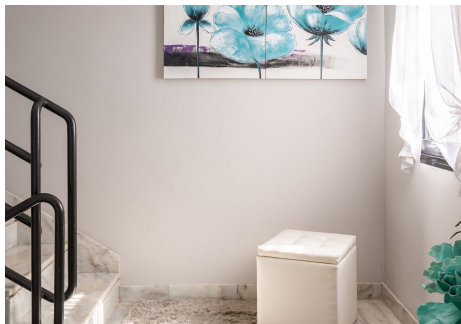
# IDILIQ

## ESTATES

charming restaurants, and local shops all within walking distance — and Estepona, San Pedro, Puerto Banús, and Marbella just a short drive away — the location is truly unbeatable.

The townhouse is offered for sale fully furnished and ready to move into.

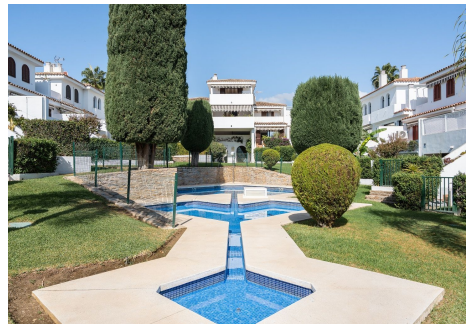
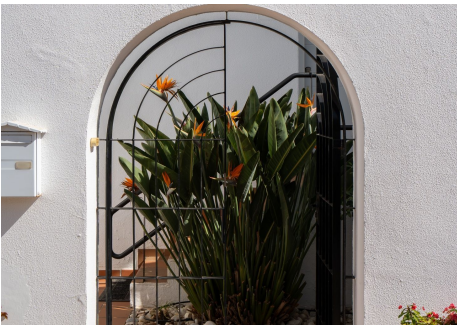
Viewings are highly recommended.





# IDILIQ

ESTATES



# IDILIQ

ESTATES

