



R5379907

📍 Benalmadena

REF# R5379907 680.000 €

BEDS

3

BATHS

2

BUILT

105 m²

TERRACE

82 m²

Modern Duplex Penthouse with Panoramic Sea Views in Benalmádena

This elegant duplex penthouse enjoys stunning panoramic sea views and a prime location in Benalmádena, just a short drive from the beach and the picturesque village of Benalmádena Pueblo.

The main floor features a bright open-plan living area with a fully equipped kitchen and breakfast bar, leading out to a spacious terrace ideal for dining and relaxing. Two bedrooms are located on this level, one with direct terrace access, along with a convenient laundry room.

On the upper level there is the main bedroom with an en-suite bathroom and access to a spectacular rooftop terrace with a private jacuzzi and breathtaking views of the Mediterranean.

Finished to a high standard, the property offers ceramic tile flooring throughout, hot and cold air conditioning, underfloor heating, smoke detectors, an alarm system, and built-in wardrobes in all bedrooms.

Set within a secure and beautifully maintained complex, residents enjoy excellent communal facilities including a large swimming pool, gym, paddle tennis courts, jacuzzi, whirlpool, sauna, cinema room, and a children's play area.

The property includes two underground parking spaces and a storage room. Perfectly located close to Benalmádena Pueblo's restaurants, cafés, and amenities, and only a short drive from the coast, Málaga

+34 951 123 083 | +44 (0)330 179 8687 | info@idilqestates.com Local 28, Edificio D, Centro de Negocios Puerta

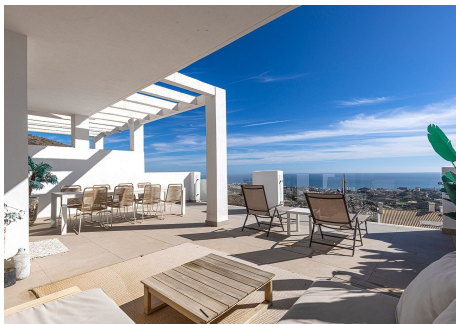
de Banús, N-340, Km 175, 29660 Nueva Andalucía

IDILIQ

ESTATES

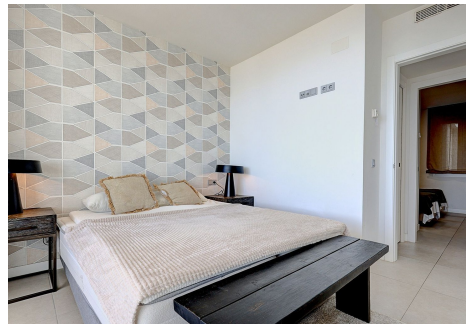
Airport is just 15 minutes away, making this an ideal holiday home, second residence, or investment opportunity with strong rental potential.

The neighbouring penthouse is also available for €680,000. Both can be purchased together at a discounted combined price.



IDILIQ

ESTATES



IDILIQ

ESTATES



IDILIQ

ESTATES

