



R4432288

 Benalmadena Costa

REF# R4432288 998.000 €

BEDS

3

BATHS

3

BUILT

135 m²

TERRACE

67 m²

BEST VIEWS IN PUERTO MARINA!

CLASSIC 3 BEDROOMS DUPLEX PENTHOUSE WITH BREATHTAKING VIEWS OF THE PORT AND THE BENALMADENA COAST IN ONE OF THE BEST BUILDINGS OF PUERTO MARINA.

The apartment is located in the DOS MARES community with a roof top community pool with superb beach and sea views, storage room and underground parking with access through the marina! This complex has been built to the highest standards.

The terraces of this urbanisation are very generous and benefit from unforgettable views. The apartment has sun in the morning in the bedrooms and in the afternoon on the living room side.

The property represents a 3 bedrooms duplex penthouse on the beachfront, in the heart of Puerto Marina.

IDILIQ

ESTATES

The living room has alone 30 m2 with access to the large terrace with frontal sea and Benalmadena coast views.

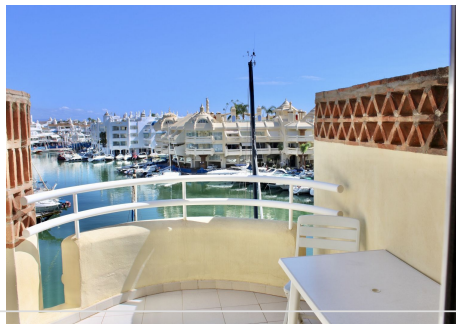
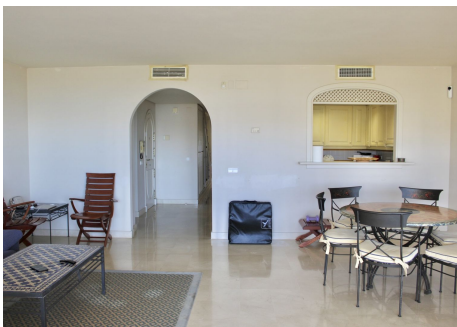
There is an adjacent separate fully equipped and furnished kitchen, which can easily be opened to the living area.

On the same first level there are 2 large bedrooms and 2 full bathrooms with marble finishes. One of the bedrooms offers a private terrace and the bathroom en suite.

The second level of the duplex belongs to the master bedroom, which has itself a private terrace with views of the port. From this floor the property has direct private door to the roof top pool. The only unit not sharing the community access of other neighbours.

The property comes with a spacious garage space and the storage room, the biggest one of the community.

Perfect investment in a quality property with the best views and only 2 steps away from the beach, port, promenade, shopping center, restaurants, cafes, shops, etc.



IDILIQ

ESTATES

