



R4861825

📍 Estepona

REF# R4861825 1.850.000 €

BEDS

4

BATHS

4.5

BUILT

479 m²

PLOT

649 m²

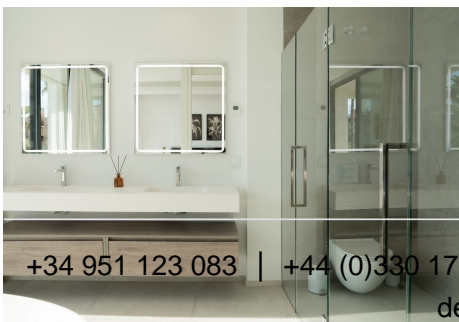
Nestled in the picturesque locale of El Campanario on the New Golden Mile, this exquisite villa represents the pinnacle of luxury living on the Costa del Sol. With a generous built area of 479m² and set on a 649m² plot, this property offers an abundance of space and privacy. The villa is classified as a sole agency listing, ensuring a unique opportunity for discerning buyers. The villa boasts four spacious bedrooms and four well-appointed bathrooms, complemented by an additional guest toilet. Each room is designed with comfort and elegance in mind, featuring fitted wardrobes and underfloor heating throughout. The fully fitted kitchen is equipped with modern appliances and ample storage. The property comes fully furnished, allowing for a seamless transition into your new home. Outdoor living is at its finest with a private pool and garden, offering stunning views of the surrounding mountains. The villa's terraces, both covered and uncovered, provide ideal spaces for relaxation and entertainment, while the solarium and balcony enhance the outdoor experience. The property is equipped with a water tank, electric blinds, and double glazing, ensuring comfort and convenience. Additional features include a basement, storage room, and a private garage, providing ample space for all your needs. The villa is equipped with modern amenities such as air conditioning, an alarm system, video entrance, and fibre optic internet. Its prime location offers proximity to essential amenities, schools, shops, and transport links, as well as easy access to the beach and nearby golf

+34 951 123 083 | +44 (0)330 179 8687 | info@idiliqestates.com Local 28, Edificio D, Centro de Negocios Puerta de Banús, N-340, Km 175, 29660 Nueva Andlucia

IDILIQ

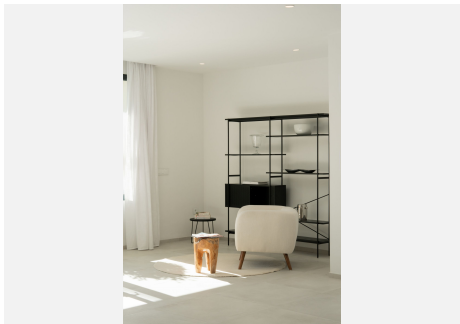
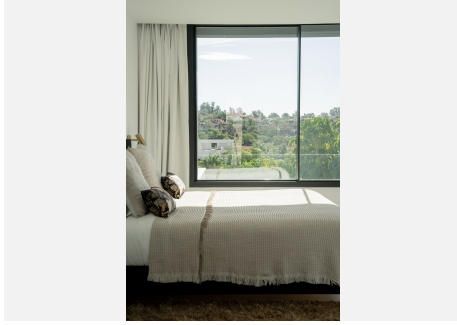
ESTATES

courses, making it a perfect choice for those seeking a luxurious lifestyle in Estepona.



IDILIQ

ESTATES



IDILIQ

ESTATES

