



R5111593

📍 La Cala Golf

REF# R5111593 615.000 €

BEDS

3

BATHS

2

BUILT

215 m²

TERRACE

63 m²

Introducing a beautifully furnished new 3-bedroom, 2-bathroom duplex penthouse in the sought-after Harmony development at La Cala Golf. Set across two levels, this south-facing apartment offers an exceptional blend of modern design, comfort, and panoramic views of the mountains and Mediterranean Sea.

Upon entering the main level, you're welcomed into a bright and spacious open-plan living and dining area, filled with natural light and seamlessly connected to a sleek, contemporary kitchen. Behind the living space, two generously sized guest bedrooms share a stylish bathroom—ideal for family or visitors.

The living area opens onto a private terrace featuring a built-in BBQ and outdoor seating area, perfect for dining al fresco while enjoying the peaceful surroundings and sunshine.

Upstairs, the master suite occupies the entire top floor, offering maximum privacy and luxury. The bedroom includes an elegant en-suite bathroom and direct access to an expansive terrace designed for relaxation, complete with a beautiful lounge area. With its south-facing orientation, this terrace enjoys sun all day and

+34 951 123 083 | +44 (0)330 179 8687 | info@idiliqestates.com Local 28, Edificio D, Centro de Negocios Puerta de Banús, N-340, Km 175, 29660 Nueva Andlucia

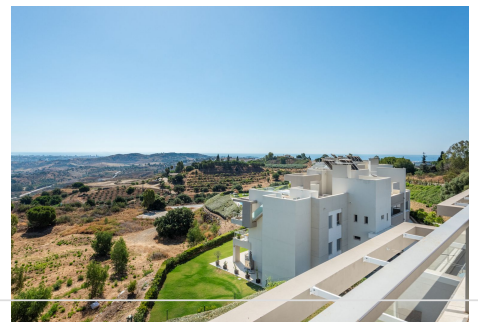
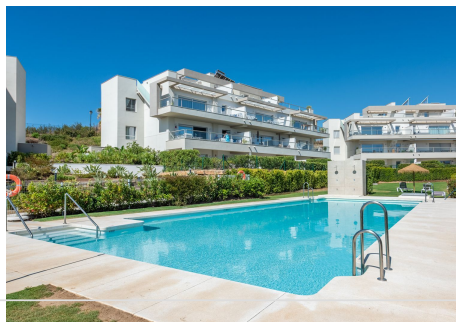
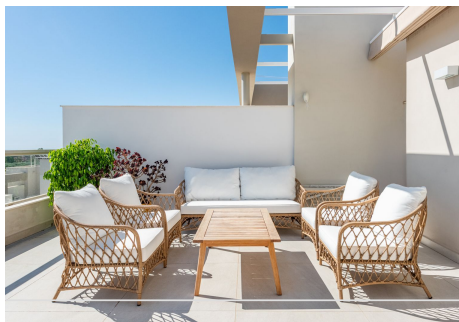
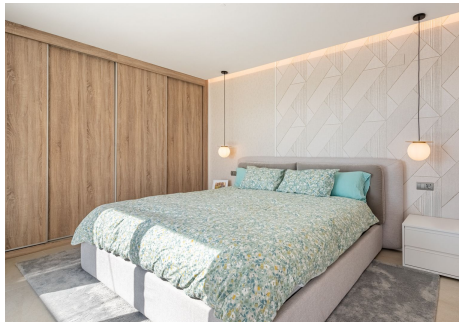
IDILIQ

ESTATES

breathtaking views of the mountains and sea.

The property includes two underground parking spaces and a private storage room. Set within a well-maintained gated community, residents enjoy access to lush gardens and a spectacular communal swimming pool, making it an ideal retreat for both year-round living and holidays.

Located just minutes from the golf course and a short drive to the beach, restaurants, and the charming town of La Cala de Mijas, this is a truly outstanding penthouse in a peaceful yet convenient location.



+34 951 123 083 | +44 (0)330 179 8687 | info@idiliqestates.com Local 28, Edificio D, Centro de Negocios Puerta de Banús, N-340, Km 175, 29660 Nueva Andlucia

IDILIQ

ESTATES

