

IDILIQ

ESTATES



R4804225

📍 Benahavís

REF# R4804225 8.800.000 €

BEDS

7

BATHS

9

BUILT

760 m²

PLOT

1454 m²

TERRACE

668 m²

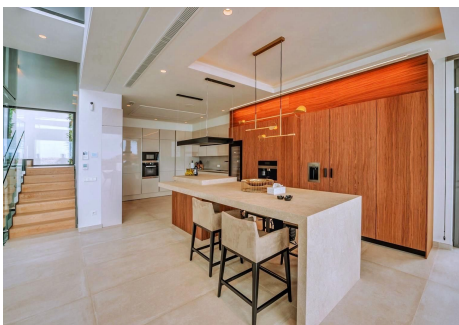
Nestled in a prime location, this exceptional property embodies modern luxury, harmoniously blending with the unique topography of its 1,439 m² plot. The villa's privileged position on the hillside offers breathtaking views of the lush golf courses in the valley, the majestic Andalusian mountains, and the sparkling Mediterranean Sea, extending all the way to the African coast and Gibraltar. Simply stunning! The moment you step into this ultra-comfortable, eco-friendly home, you are captivated by the open views to the golf course and the sea and transported into a realm of unparalleled modern luxury that stimulates the senses and sparks limitless creativity. The villa captivates with its exquisite architectural details, open-plan spaces with high ceilings, and expansive glass walls. The refined color palette, featuring shades of grey alongside a timeless black-and-white duo, exudes an elegant, stylish, and ever-fashionable ambiance. This 760 m² masterpiece is a unique blend of design excellence, unmatched detail, and harmonious composition. It boasts the finest materials, top-tier equipment, and every luxury feature you would expect from a custom-built home. The property includes a new glass elevator connecting all three levels, solar panels, a cutting-edge home automation system with Control4 integration (the latest in U.S. technology), and all walls enhanced with injection treatments to prevent any potential humidity issues. The villa is designed for ultimate comfort and entertainment. It offers seven luxurious bedrooms, each with its own ensuite bathroom,

+34 951 123 083 | +44 (0)330 179 8687 | info@idiliqestates.com Local 28, Edificio D, Centro de Negocios Puerta de Banús, N-340, Km 175, 29660 Nueva Andlucia

IDILIQ

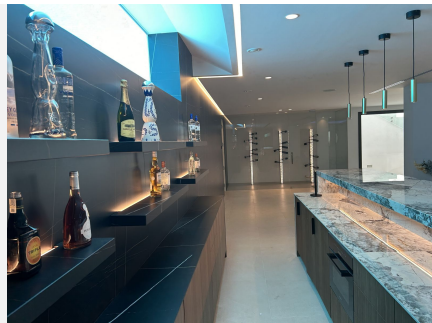
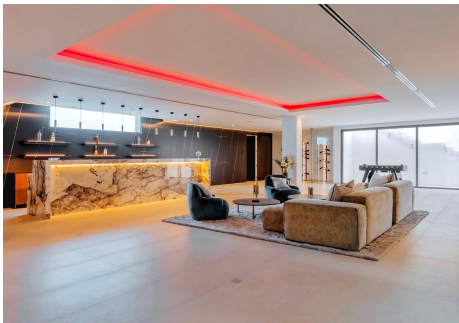
ESTATES

providing complete privacy and convenience. Additionally, there are guest toilets on both the ground floor and in the basement. The expanded kitchen is a chef's dream, featuring a large island, an additional American-sized refrigerator and freezer, a large glass chiller, a hidden cooktop, and all Miele appliances. For leisure and relaxation, the property offers a professional gym, a custom-made cinema, and a full bar equipped with all the essentials, including an ice maker, dishwasher, oven, and sink. The outdoor spaces are equally impressive, with a full outdoor kitchen and island, an infinity pool that seems to merge with the sky and sea, and a 668 m² terrace where you can watch the famous Mediterranean sunset. The villa also features two grand waterfalls by the entrance. The new landscaping and gardens provide a serene backdrop to this extraordinary residence. Located in the prestigious Condes de Luque residential complex (formerly Capanes Sur), with 24-hour security and a mobile patrol, this home enjoys spectacular panoramic views of the sea, mountains, and the iconic La Concha, Marbella's majestic symbol. The area is one of the coast's most promising and rapidly developing, with outstanding natural beauty, significant investment potential, and excellent connectivity to all amenities. Sports facilities, leisure activities, golf courses, supermarkets, international schools, and playgrounds are all within easy reach. Just minutes away by car, you'll find yourself in Puerto Banús, the playground of the rich and famous, known for its glamorous nightlife, designer boutiques, casino, luxury bars, restaurants, and beach clubs. Magnificent beaches, including Blue Flag options, and the charming town of San Pedro de Alcántara are also close by. A short drive inland takes you to Benahavís, one of Andalusia's most beautiful "white villages," offering stunning landscapes and a true gastronomic experience.



IDILIQ

ESTATES



IDILIQ

ESTATES

