



R4686979

📍 NEW GOLDEN MILE

REF# R4686979 640.000 €

BEDS

3

BATHS

3

BUILT

140 m²

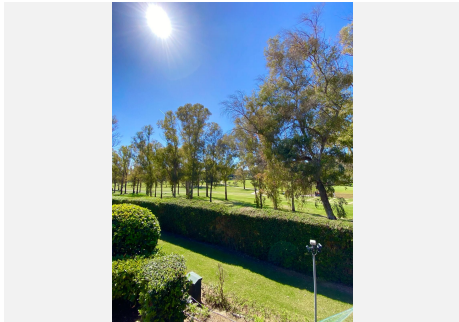
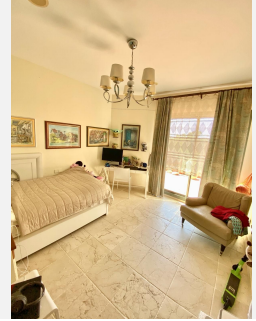
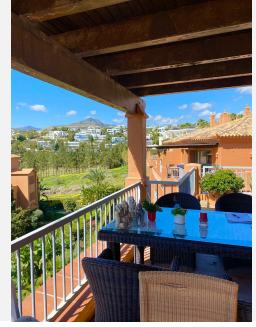
TERRACE

120 m²

Fantastic penthouse in a luxury urbanization. The apartment is located on the corner on the top floor of the block, made up of a single level. It consists of 3 large bedrooms with 3 ensuite bathrooms. The three bedrooms have access to the outside, the 120m terrace surrounds the house providing light and spaciousness. The large kitchen is fully equipped and has access to a large laundry room, which could be used as a service bedroom and has access to one of the terraces. The living room has large windows with double access to the terraces with panoramic views to the west. The prestigious Benatalaya urbanization offers 4 outdoor swimming pools with large well-kept gardens, 1 heated indoor pool, gym, sauna and jacuzzi. In addition, the community has 24-hour security and surveillance cameras that surround the urbanization. The location is ideal for families, in front of the urbanization we can find the Atalaya school, and a Mercadona a few meters from the house, there is also a cafeteria and some services such as gas stations, pharmacies and banks are very close to the house. The urbanization is located on the first line of golf of the renowned Atalaya course. **INCLUDES 2 underground garage spaces and storage room.**

IDILIQ

ESTATES



IDILIQ

ESTATES

