



R5183950

📍 Torrequebrada

REF# R5183950 440.000 €

BEDS

3

BATHS

2

BUILT

146 m²

TERRACE

53 m²

Spacious 3-Bedroom Duplex Penthouse in Atalaya Golf – Prime Location Near the Beach

This bright and generously proportioned 3-bedroom, 2-bathroom duplex penthouse is located in the highly desirable Atalaya Golf community. Ideally situated within walking distance to the beach, Mercadona supermarket, and a wide range of local bars and restaurants, the property also benefits from close proximity to the British College of Benalmádena, Torrequebrada International School, and the vibrant Benalmádena Marina.

On the main level, the apartment features a large, airy living room that opens onto an expansive south-facing terrace—perfect for enjoying the sun or entertaining guests. There is a fully fitted kitchen with a separate utility room, a spacious master bedroom with an en-suite bathroom, and an additional guest bathroom.

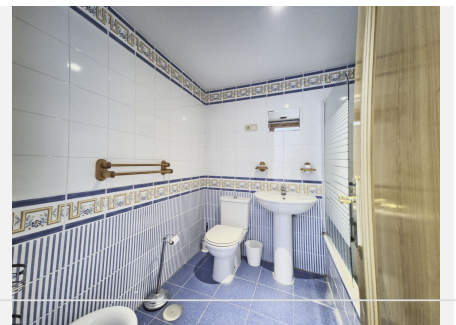
Upstairs, you'll find two more large bedrooms that share access to a second private terrace, offering even more outdoor living space. The apartment has marble flooring throughout and includes a private

+34 951 123 083 | +44 (0)330 179 8687 | info@idiliqestates.com Local 28, Edificio D, Centro de Negocios Puerta de Banús, N-340, Km 175, 29660 Nueva Andalucía

underground parking space and a separate storage room.

Residents of the community enjoy access to several communal swimming pools and immaculately maintained gardens. For golf lovers, the property sits right next to the exclusive Torrequebrada Golf Club, making it a dream location for both permanent living and holiday getaways.

This penthouse combines space, location, and lifestyle, offering a fantastic opportunity in one of Benalmádena's most popular residential areas.



IDILIQ

ESTATES

