



R5369065

📍 Marbella

REF# R5369065 1.695.000 €

BEDS

2

BATHS

3

BUILT

380 m²

PLOT

380 m²

TERRACE

130 m²

This elegant duplex penthouse, located in Alzambra Vasari—one of the most privileged locations near the roundabout leading to Puerto Banús—redefines the concept of Mediterranean comfort through spacious, bright, and thoughtfully designed spaces. Unlike Alzambra Resort, which is located further inland and offers lower-end properties, Vasari stands out for its strategic location and more exclusive surroundings.

Spanning two floors, this penthouse offers a unique residential experience where the connection between indoors and outdoors takes center stage, thanks to its generous terraces with a chill-out area and unobstructed views of lush gardens and the attractive communal pool.

The home stands out for its spaciousness—380 m² of floor area—and a layout designed to maximize privacy and functionality. On the main floor is the guest bedroom, along with a spacious living room featuring a cozy fireplace that opens onto the terraces, inviting you to enjoy the climate year-round. The fully equipped kitchen combines practicality and design, ideal for both daily life and entertaining guests.

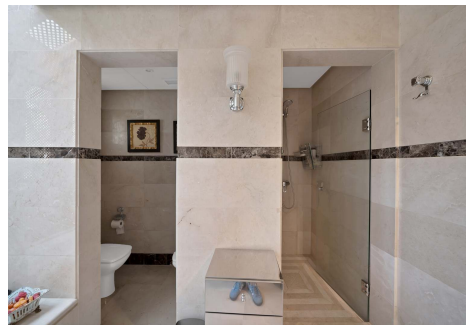
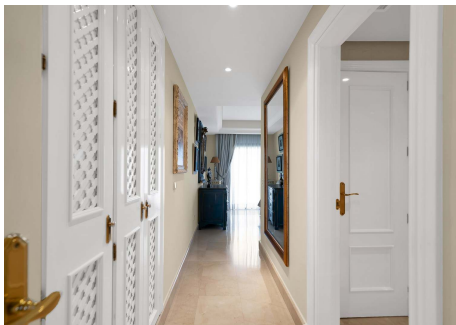
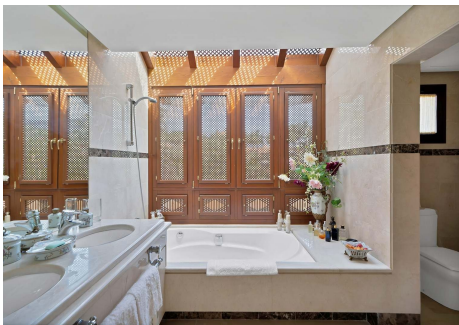
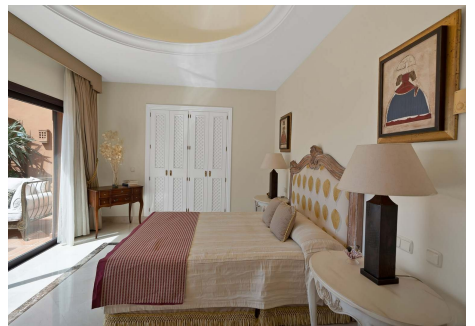
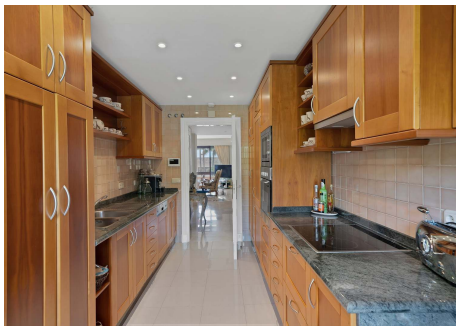
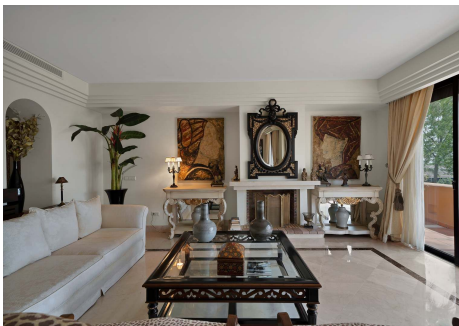
IDILIQ

ESTATES

The master bedroom is located on the upper floor, offering a peaceful and bright atmosphere, complete with built-in closets and an en-suite bathroom featuring thoughtful details and underfloor heating, providing extra comfort. The finishes throughout the home exude quality and warmth: marble floors that reflect natural light and oak woodwork on doors and windows that lend a timeless elegance.

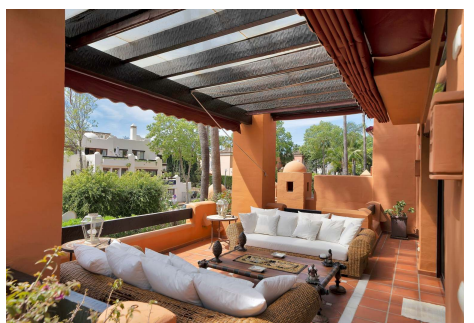
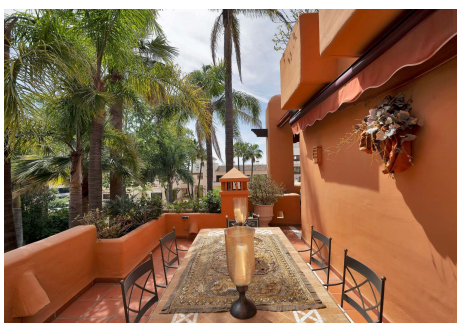
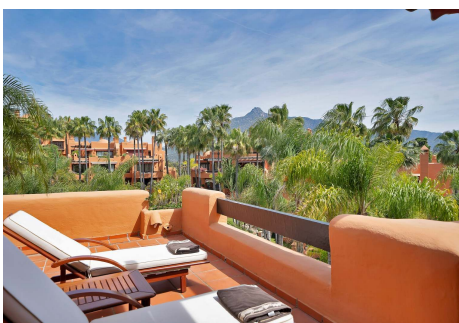
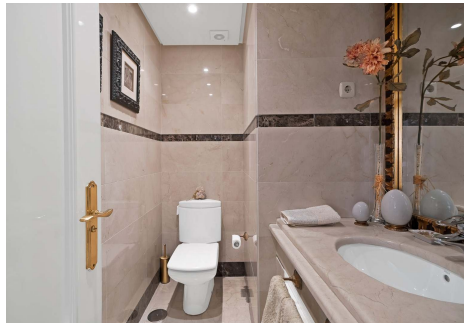
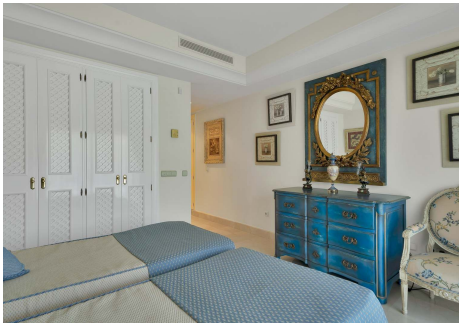
The property is part of a gated community with 24-hour security, surrounded by mature landscaped gardens, walking paths, and artificial streams that create a serene and exclusive setting. The architecture and landscaping evoke a traditional Mediterranean style, where every stroll within the complex becomes an experience.

From its terraces, you can enjoy unobstructed views of the pool and green spaces, creating a relaxing atmosphere that invites you to unwind. This penthouse is an ideal choice both as a primary residence and as an investment, combining privacy, spaciousness, and a truly privileged setting in the heart of Puerto Banús.



IDILIQ

ESTATES



IDILIQ

ESTATES

