

# IDILIQ

ESTATES



R4405978

 Benalmadena Costa

REF# R4405978 998.000 €

BEDS

4

BATHS

4

BUILT

222 m<sup>2</sup>

PLOT

872 m<sup>2</sup>

TERRACE

25 m<sup>2</sup>

This villa is a unique opportunity to purchase a property in a prime location in Benalmadena Costa, Malaga. With its incredible sea views and panoramic views towards the Fuengirola Bay, this villa offers a truly breathtaking setting. Situated within walking distance to the beach, shops, and train station, it provides convenience and accessibility. The villa is built on a flat plot, ensuring sun all day long. It is distributed over two levels, offering ample space and comfort. On the ground level, you will find a spacious living room with direct access to the terrace and pool area, perfect for enjoying the Mediterranean climate. The independent kitchen is fully fitted and equipped, making it ideal for those who love to cook. Additionally, there is one bedroom and one bathroom on this level, providing convenience and privacy. Moving to the second floor, you will find three bedrooms and two bathrooms. Two of the bedrooms have direct access to the terrace, allowing you to enjoy the spectacular views from the moment you wake up. The villa also features a private parking area that can accommodate up to four cars, ensuring ample space for your vehicles. With its prime location, stunning sea views, and proximity to amenities, transport, and the beach, this villa is truly a dream home. Don't miss out on this incredible opportunity to own a piece of paradise in Benalmadena Costa. It would also be a great rental investment property due to its location, within walking distance to the best beaches of Benalmadena and restaurants like Trocadero, La niña bonita etc.

+34 951 123 083 | +44 (0)330 179 8687 | [info@idiliqestates.com](mailto:info@idiliqestates.com) Local 28, Edificio D, Centro de Negocios Puerta de Banús, N-340, Km 175, 29660 Nueva Andlucia

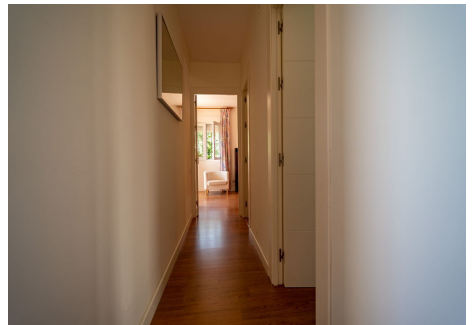
# IDILIQ

ESTATES



# IDILIQ

ESTATES



# IDILIQ

ESTATES



# IDILIQ

ESTATES

