



R4897822

📍 Benahavís

REF# R4897822 4.586.000 €

BEDS

4

BATHS

5

BUILT

780 m²

PLOT

1036 m²

TERRACE

150 m²

Dream Villa for Golfers with Panoramic Views in Puerto del Almendro, Benahavís

Located in the exclusive and private gated community of La Resina, in Puerto del Almendro, this stunning luxury villa has been designed and decorated with an unparalleled level of detail and sophistication. With 930 m² of built space on a 1,036 m² plot, this property represents the perfect fusion of elegance, comfort, and cutting-edge technology.

Situated on one of the best plots in the area, the villa offers breathtaking 270° panoramic views of the sea and mountains, creating a unique setting of peace, privacy, and natural beauty. Additionally, it is located within a secure gated community with 24/7 security, ensuring maximum safety and tranquility.

A Golfer's Paradise

Designed for golf enthusiasts, the villa features putting greens in the garden and a professional golf simulator, offering a premium experience without leaving home.

## Wellness and Relaxation in Every Space

Luxury is evident in every detail, from the private spa, which includes a Turkish sauna and Swedish sauna, to the fully equipped gym with state-of-the-art fitness technology.

Outdoors, relaxation is guaranteed with a heated jacuzzi and a stunning heated private pool, surrounded by beautifully landscaped gardens. The property also boasts a covered chill-out area with a TV, perfect for enjoying the outdoors in total comfort.

## Layout and Exclusive Features

3 spacious bedrooms in the main villa, each with an en-suite bathroom.

Independent apartment, perfect for guests or staff, featuring 1 bedroom, 1 full bathroom, and a fully equipped kitchen.

Private hair salon, offering a personal care experience at home.

Indoor elevator, ensuring accessibility throughout the house.

Game room, ideal for family entertainment.

## Functional and Versatile Spaces

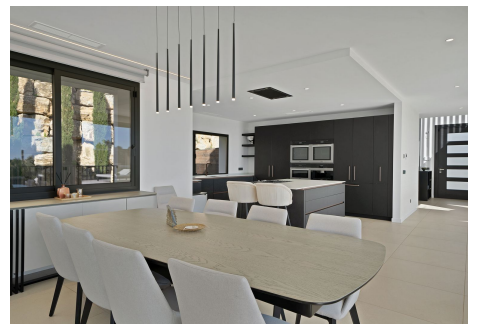
Indoor garage with space for 3 cars.

Outdoor parking for 2 cars, which can also be used as storage or converted into an additional apartment.

Solar panels, ensuring energy efficiency and sustainability.

Every corner of this villa has been carefully designed with the highest quality materials, achieving the perfect balance between luxury, modernity, and comfort.

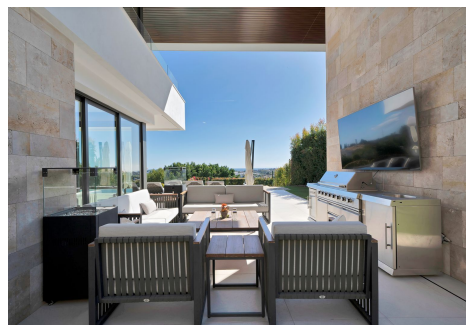
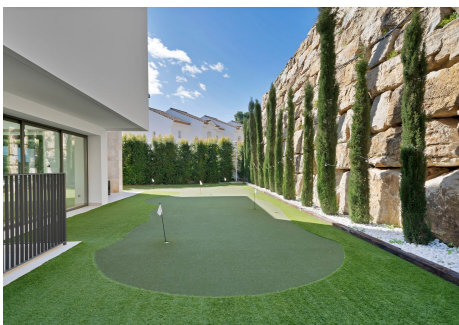
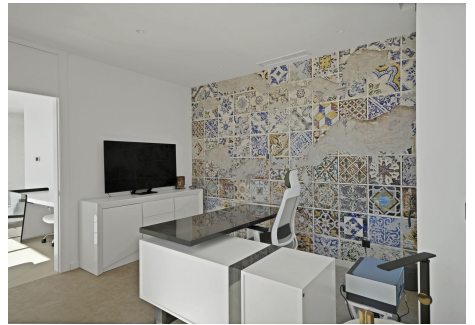
If you are looking for an exclusive residence where privacy, security, and design come together in an unparalleled setting, this villa is simply one of a kind.





# IDILIQ

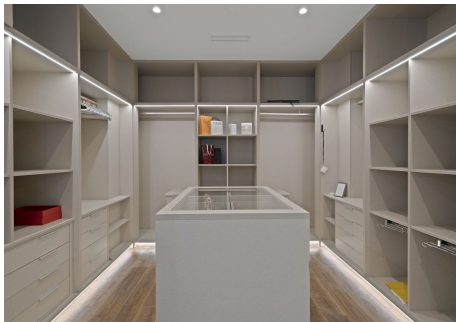
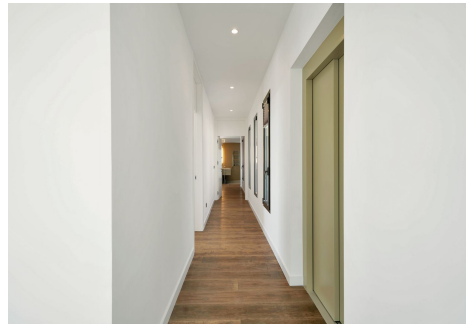
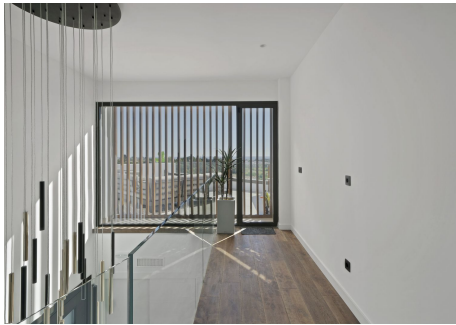
ESTATES





# IDILIQ

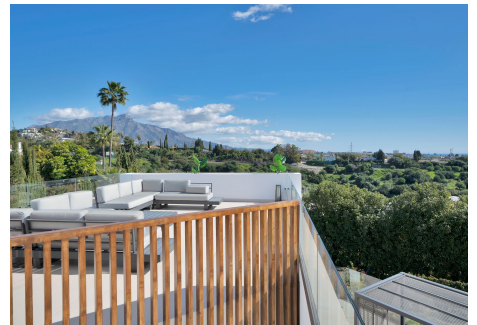
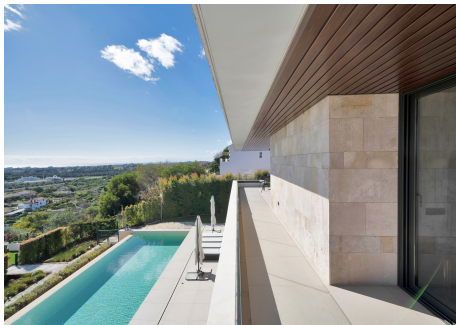
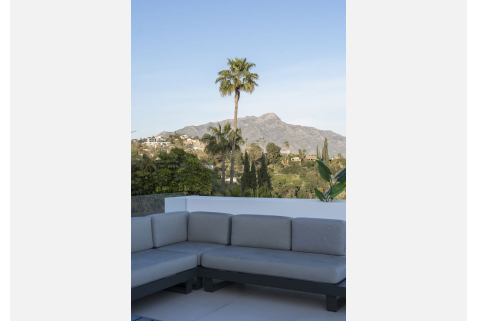
ESTATES





# IDILIQ

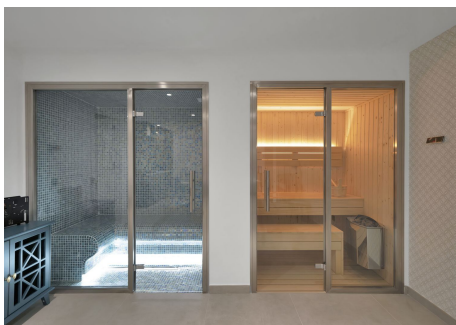
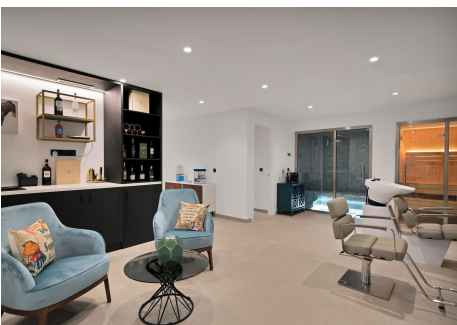
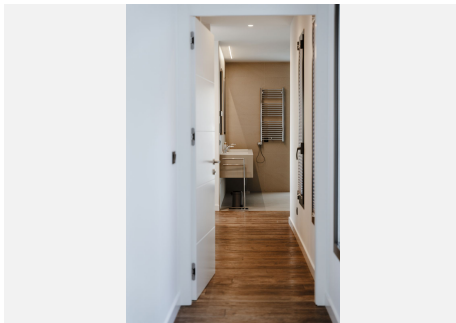
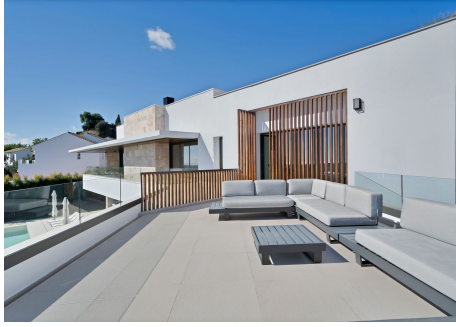
ESTATES





# IDILIQ

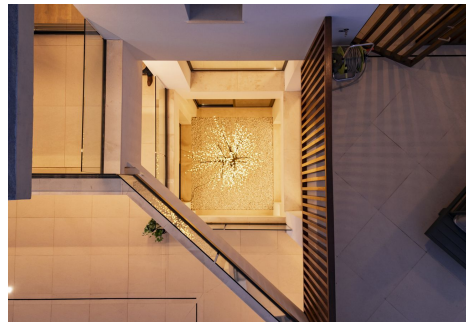
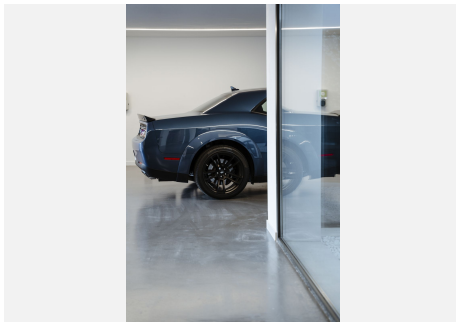
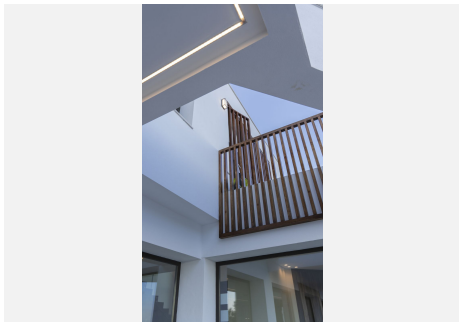
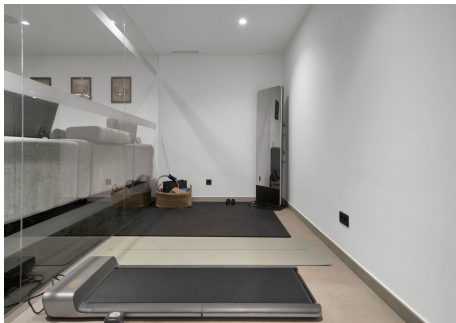
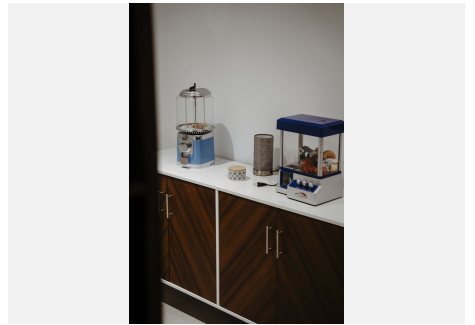
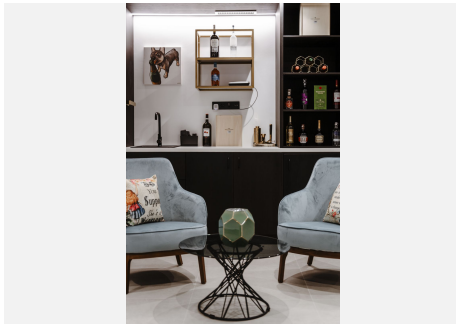
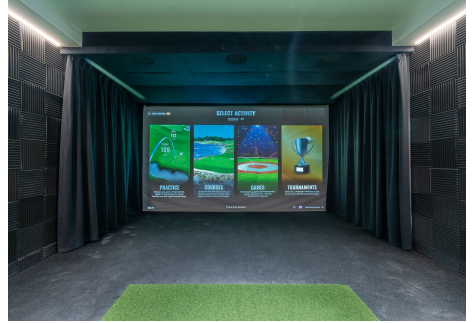
ESTATES





# IDILIQ

ESTATES





# IDILIQ

ESTATES

