

# IDILIQ

ESTATES



R4599586

📍 Manilva

REF# R4599586 750.000 €

BEDS

4

BATHS

3.5

BUILT

364 m<sup>2</sup>

PLOT

508 m<sup>2</sup>

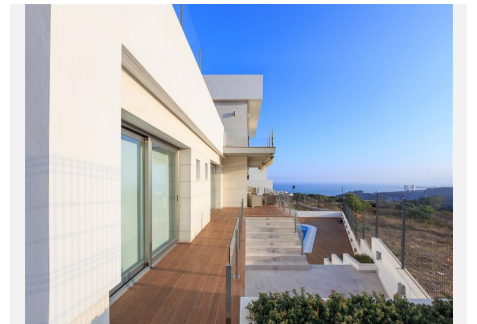
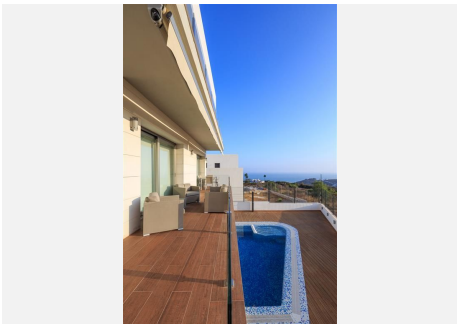
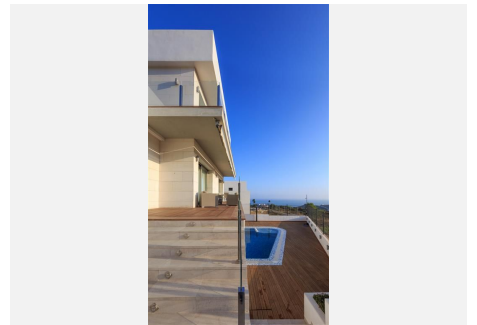
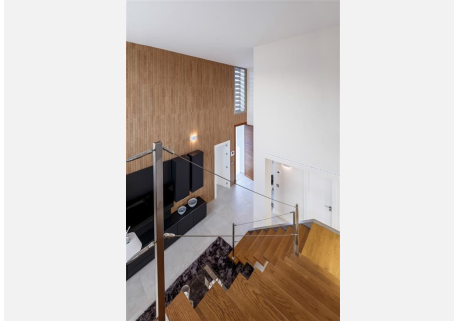
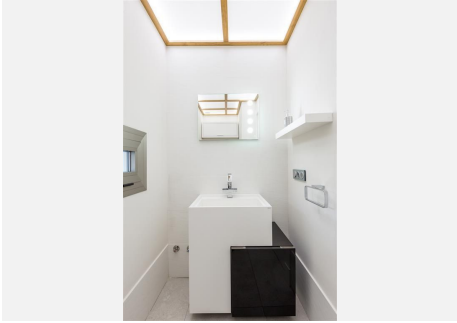
TERRACE

150 m<sup>2</sup>

Modern style and very attractive villa in excellent position, and built using high quality materials, south facing, very private and with stunning panoramic sea views of the coast towards Gibraltar and the Africa coast. Located in a very quiet urbanization surround of massive nature. Midway between Sotogrande and the famous Puerto de la Duquesa, only 700m. from really beautiful beaches, all amenities are close in a short 5-10min. drive. Many extras: Air conditioning and central heating, parking space, swimming pool with jacuzzi and countercurrent swimmer, solarium with other jacuzzi, domotic, and much more. Must be seen!!.

# IDILIQ

ESTATES



# IDILIQ

ESTATES

