



R5002051

📍 La Mairena

REF# R5002051 690.000 €

BEDS

4

BATHS

4

BUILT

237 m²

TERRACE

120 m²

"MAGNIFICENT TOWNHOUSE WITH PANORAMIC VIEWS"

Discover this stunning townhouse located in La Mairena. With panoramic views and just a 20 minutes drive from Marbella and 25 minutes to Fuengirola

Property features:

Three-level distribution:

Upper floor floor: Spacious living/dining room with fireplace, equipped kitchen , laundry room, and guest toilet. Access to the front and backyard terraces.

First floor: Four spacious bedrooms two of them in suite.

Large sunny terrace is ideal for dining and relaxing, to enjoy the space with marvellous coastal views.

Ground floor: Double garage, storage room, laundry.

High-quality finishes: The spaces are presented with marble finishes, air conditioning, and meticulous details that highlight the quality of the property.

La Mairena is known for its German International School, Ecos College, and Hofsaess Tennis Academy, offering an exclusive family-friendly environment.

Don't miss the opportunity! Come and see this spectacular property, which needs to be visited to be fully

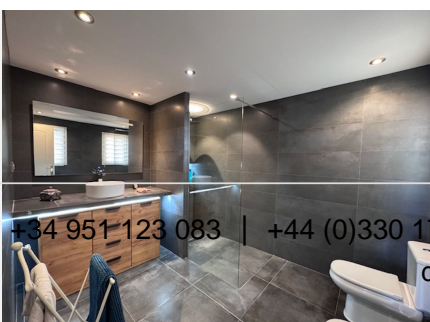
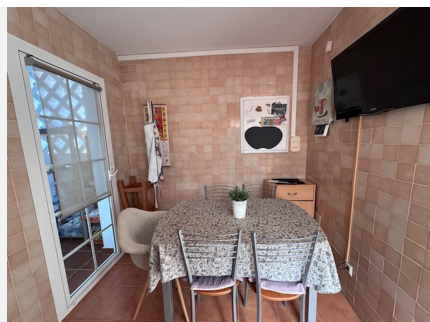
+34 951 123 083 | +44 (0)330 179 8687 | info@idiliqestates.com Local 28, Edificio D, Centro de Negocios Puerta de Banús, N-340, Km 175, 29660 Nueva Andlucia

IDILIQ

ESTATES

appreciated.

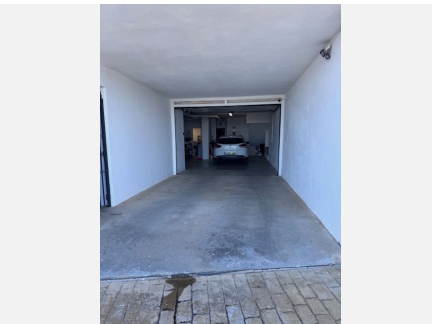
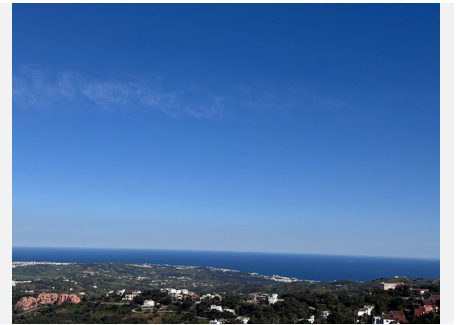
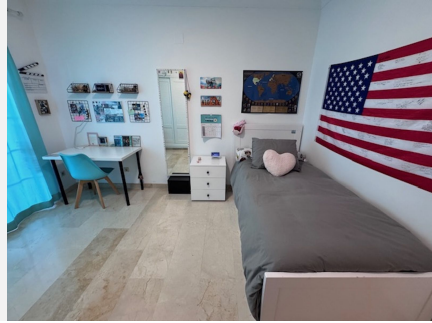
For more information and to schedule viewings, please contact us. This is the home of your dreams!"



+34 951 123 083 | +44 (0)330 179 8687 | info@idiliqestates.com Local 28, Edificio D, Centro de Negocios Puerta de Banús, N-340, Km 175, 29660 Nueva Andalucía

IDILIQ

ESTATES



IDILIQ

ESTATES

