



R4328017

📍 Elviria

REF# R4328017 1.295.000 €

BEDS

3

BATHS

3.5

BUILT

222 m²

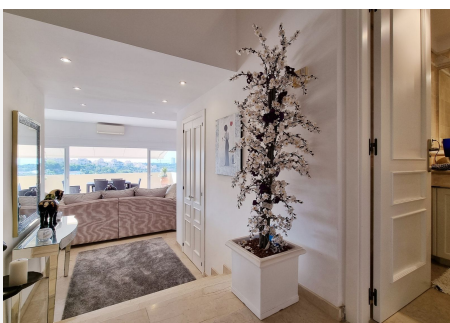
TERRACE

116 m²

JUST REDUCED IN PRICE FOR A FAST SALE! We proudly present this exclusive luxury one-of-a-kind duplex penthouse in Elviria Hills enjoying totally unobstructed clear and open views over Greenlife Golf, Elviria's green valley, the mountains, and the Mediterranean Sea. The elevator allows for direct private entry to the property, when once the door opens, the views take your breath away. It comes fully furnished with in a classical luxury style and a totally open, recently renovated, modern designer's kitchen with breakfast bar, with a separate washing room and a storage room. On the same level we find the guest toilet, large bright lounge with sitting area with a natural fireplace that opens both to the lounge and the kitchen and a TV corner. There are two generously sized on-suite bedrooms on this level, one considered a second master bedroom. From each room and space, you can step out to a sunny terrace and enjoy the beautiful view. Upstairs we find another superb large private master bedroom, with an ensuite bathroom, walk-in closet and a private south facing sunny terrace. It comes with two private garage spaces and storage rooms. This kind of timeless and unique property rarely becomes available on the market!

IDILIQ

ESTATES



IDILIQ

ESTATES



IDILIQ

ESTATES



IDILIQ

ESTATES

