



R5004541

📍 Benahavís

REF# R5004541    3.250.000 €

BEDS

3

BATHS

3.5

BUILT

256 m²

PLOT

2250 m²

Located in the prestigious residential area of El Paraíso in Benahavís, this charming Andalusian-style villa beautifully blends traditional character with modern comfort. It offers complete privacy along with breathtaking panoramic views of the Mediterranean Sea.

The property is mainly laid out on a single level, making it especially functional and comfortable. It features three spacious bedrooms, three full bathrooms, and a guest toilet. The bright and airy living-dining area flows seamlessly into a generous kitchen with a cozy dining nook—perfect for family gatherings. Upstairs, a welcoming office space provides an ideal setting for working from home or enjoying a quiet reading corner, filled with natural light.

The main bedrooms, living room, and covered terrace all boast stunning sea views, creating a unique sense of openness and harmony with the surrounding landscape.

Outside, the villa offers a beautifully landscaped garden, a large private swimming pool, and a covered outdoor kitchen with a barbecue—ideal for making the most of the Mediterranean lifestyle all year round.

+34 951 123 083 | +44 (0)330 179 8687 | [info@idiliqestates.com](mailto:info@idiliqestates.com)    Local 28, Edificio D, Centro de Negocios Puerta de Banús, N-340, Km 175, 29660 Nueva Andalucía

# IDILIQ

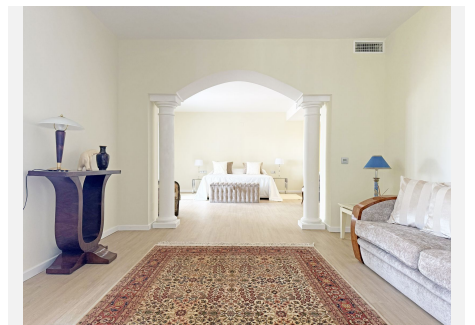
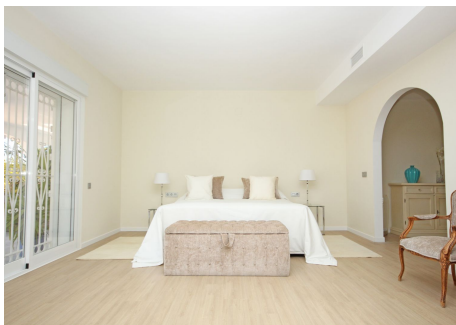
## ESTATES

There is also a garage with space for two vehicles.

With approximately 500 m<sup>2</sup> of built space on a generous 2,270 m<sup>2</sup> plot, the property offers expansive outdoor areas and a high level of privacy.

Additionally, there is the possibility to build an extra floor\*\*, presenting an excellent opportunity to expand the living space or create new rooms to suit the future owner's needs.

A home full of character, in a prime location—perfect as a permanent residence or a holiday retreat on the Costa del Sol.



+34 951 123 083 | +44 (0)330 179 8687 | [info@idiliqestates.com](mailto:info@idiliqestates.com) Local 28, Edificio D, Centro de Negocios Puerta de Banús, N-340, Km 175, 29660 Nueva Andalucía

# IDILIQ

ESTATES



# IDILIQ

ESTATES

