



R5156038

📍 Nueva Andalucía

REF# R5156038 695.000 €

BEDS

2

BATHS

2

BUILT

85 m²

TERRACE

50 m²

Prime Location & Rare Opportunity – Refurbished Ground Floor in Andalucía Garden Club

Location, location, location! Andalucía Garden Club is one of the most established and sought-after communities in Nueva Andalucía, perfectly positioned just a short walk to Puerto Banús, the beach, and all amenities, yet tucked away enough to enjoy peace and privacy. Built in the early 1980s to the highest standards of the time, this charming gated complex remains a benchmark in the area thanks to its lush gardens, spacious layout, and unbeatable convenience.

The community offers residents a large swimming pool with separate children's area, beautifully maintained green zones, a tennis court, and 24-hour security. With low-rise buildings and generous terraces, homes here enjoy both light and privacy, as well as views of the mountains, gardens, and the Mediterranean.

Featured Property – Ground Floor Apartment in the Best Block

We are delighted to present a refurbished ground floor apartment in the most desirable block of the complex. This unit enjoys direct views of the swimming pool and even a glimpse of the sea. Inside, the

+34 951 123 083 | +44 (0)330 179 8687 | info@idiliqestates.com Local 28, Edificio D, Centro de Negocios Puerta de Banús, N-340, Km 175, 29660 Nueva Andlaucia

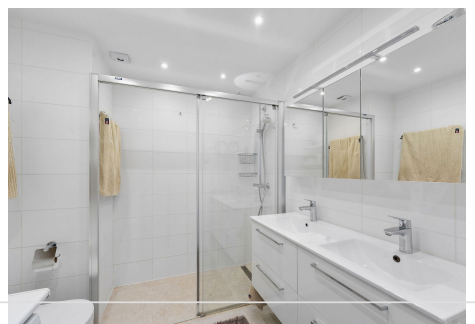
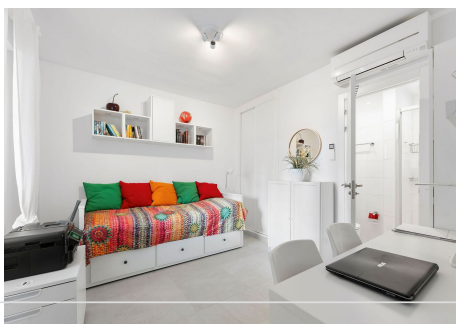
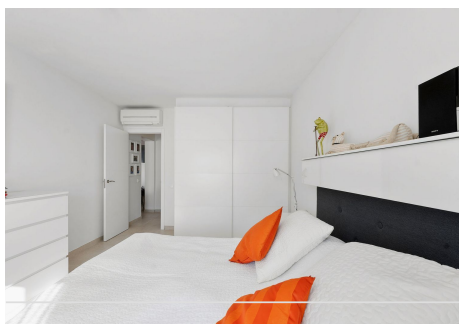
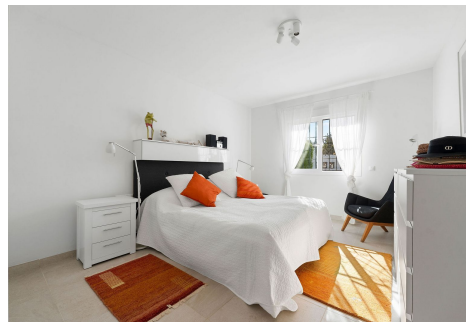
IDILIQ

ESTATES

property has been tastefully modernized, including the addition of a second bathroom. The open-plan living room and kitchen create a bright, social space, perfect for both everyday living and entertaining.

The apartment offers two terraces: a south-facing terrace with direct access to the pool and gardens, plus a welcoming patio terrace at the entrance – ideal for enjoying the morning sun or as an additional dining spot.

With its prime location, modern updates, and one of the best positions in Andalucía Garden Club, this property represents a rare opportunity for both lifestyle buyers and investors alike.



IDILIQ

ESTATES

