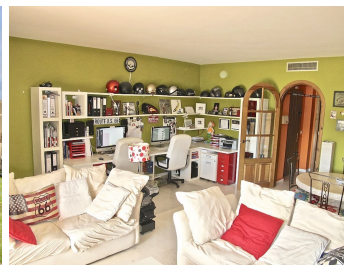


# IDILIQ

ESTATES



R4922647

📍 Atalaya

REF# R4922647 220.000 €

BEDS

1

BATHS

1

BUILT

80 m<sup>2</sup>

TERRACE

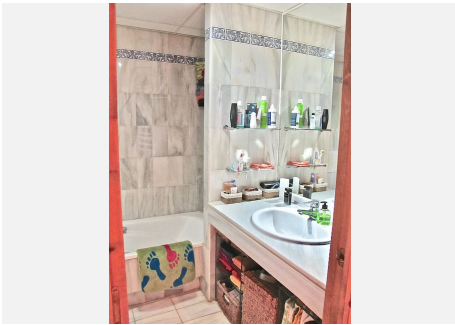
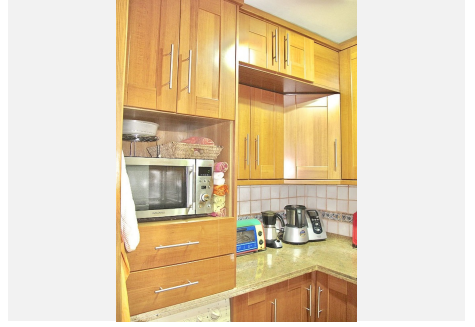
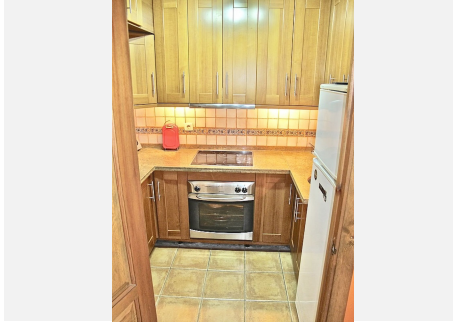
30 m<sup>2</sup>

Located in the prestigious residential area of La Cartuja, this delightful ground-floor apartment offers the perfect blend of comfort, convenience, and lifestyle. Nestled next to the renowned Atalaya Golf course, this property is a golfer's paradise and a tranquil retreat. Property Features: Bedrooms: 1 spacious master bedroom with built-in wardrobes. Bathrooms: 1 elegant bathroom designed for comfort. Built Area: 80 m<sup>2</sup> of living space. Terrace: 30 m<sup>2</sup> private terrace with direct access to communal gardens and swimming pools. Highlights: Living Room: Spacious and bright with a cozy fireplace, perfect for relaxing evenings. Terrace: Enjoy outdoor living with garden and pool views, ideal for entertaining or unwinding. Location: The apartment is conveniently located close to golf courses, the port, town amenities, and reputable schools, making it an excellent choice for both leisure and daily living. Communal Pools: Access to 3 beautifully maintained swimming pools. Gardens: Lush communal gardens create a serene atmosphere. Security: Located in a gated complex with 24-hour security for peace of mind. Enjoy picturesque views of the garden and pool from your terrace. Category: Resale property, offering great value. This charming ground-floor apartment is perfect as a primary residence, holiday home, or investment property. With its prime location next to Atalaya Golf and its thoughtful design, it offers a relaxed lifestyle on the Costa del Sol.



# IDILIQ

ESTATES



# IDILIQ

ESTATES

