



R5347750

📍 Puerto Banús

REF# R5347750 650.000 €

BEDS

2

BATHS

3.5

BUILT

289 m²

TERRACE

100 m²

Discover this elegant 4-floor, 2-bedroom townhouse perfectly situated in one of Nueva Andalucía's most sought-after locations. Just steps away from the Puerto Banús Casino and within easy walking distance of all essential services, this property offers the ideal blend of comfort, convenience, and Mediterranean lifestyle.

Set within a private, charming urbanization, residents enjoy access to a beautifully maintained communal swimming pool and lush gardens, all shared among only a few neighbors—ensuring peace, privacy, and exclusivity.

Surrounded by a wide variety of cafés, shops, business areas, and hotels, the home is just minutes from the heart of Puerto Banús, its golden beaches, and the world-famous marina. Whether you're seeking vibrant nightlife, upscale shopping, or seaside relaxation, everything is right at your doorstep.

The townhouse boasts multiple private terraces—both covered and uncovered—along with an impressive rooftop terrace offering open-air space ideal for sunbathing or entertaining.

+34 951 123 083 | +44 (0)330 179 8687 | info@idiliqestates.com Local 28, Edificio D, Centro de Negocios Puerta de Banús, N-340, Km 175, 29660 Nueva Andlaucia

IDILIQ

ESTATES

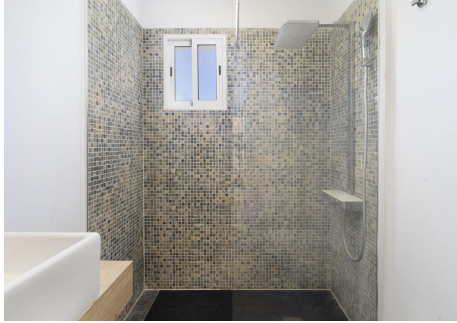
Perfect as a permanent residence, holiday home, or investment opportunity, this property delivers exceptional lifestyle value in one of Marbella's most prestigious areas. Underground garage space included



+34 951 123 083 | +44 (0)330 179 8687 | info@idiliqestates.com | Local 28, Edificio D, Centro de Negocios Puerta de Banús, N-340, Km 175, 29660 Nueva Andalucía

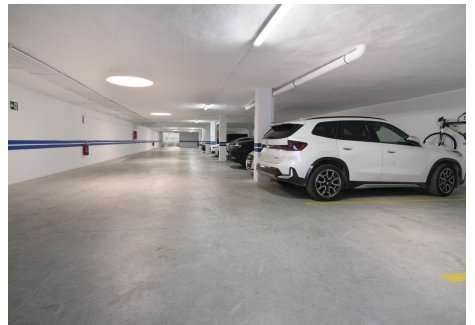
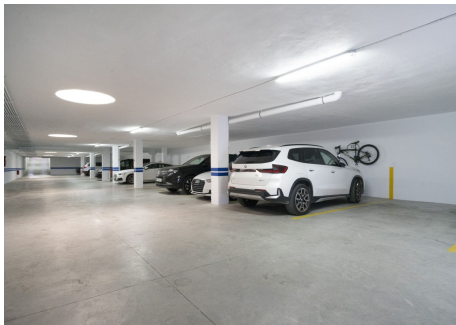
IDILIQ

ESTATES



IDILIQ

ESTATES



IDILIQ

ESTATES

