



R5394088

📍 Monda

REF# R5394088 478.000 €

BEDS

3

BATHS

3

BUILT

184 m²

PLOT

6500 m²

Country Finca With Beautiful Plot of Land

- . Many mature Olive & Almond Trees
- . Thoughtfully landscaped gardens
- . Charming rustic-style property
- . Excellent potential
- . Good location

The current owner has lovingly cared for the gardens over many years, creating a peaceful setting that feels more like a private park. The land has been carefully terraced and planted with an abundance of beautiful foliage, adding to the property's charm and character.

Property Details

A spacious covered porch welcomes you into the home, featuring high vaulted ceilings and a wall of glass that creates a bright yet cosy living space.

To the right, you will find the main house, which continues the theme of high ceilings and authentic rustic charm throughout. The lounge, dining area, and kitchen are all open-plan, creating a warm and inviting atmosphere. Patio doors lead out to a further covered terrace at the rear of the property, ideal for outdoor dining and entertaining.

Both bedrooms in the main house feature fitted wardrobes and en-suite bathrooms. Properties with this level of rustic character and charm are becoming increasingly rare.

To the left of the glazed porch is a separate guest bedroom with its own en-suite bathroom, also designed in a beautiful rustic style.

The swimming pool is positioned to the side of the property and enjoys lovely views down across the valley.

Outdoor Area & Land

Gently sloping countryside

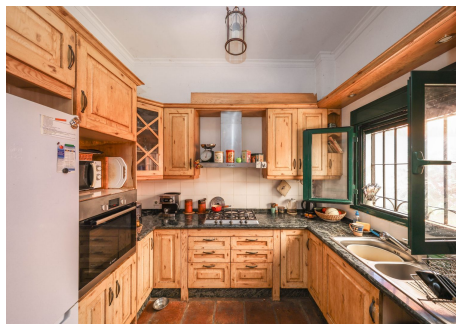
Beautifully maintained terraces and gardens

Mature trees and established planting

Views

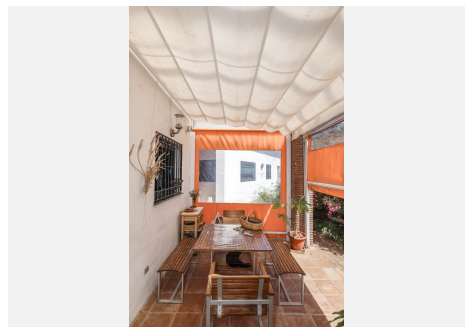
Countryside views

Mountain views



IDILIQ

ESTATES



IDILIQ

ESTATES



IDILIQ

ESTATES

