



R4747942

📍 La Mairena

REF# R4747942 475.000 €

BEDS

3

BATHS

2

BUILT

149 m<sup>2</sup>

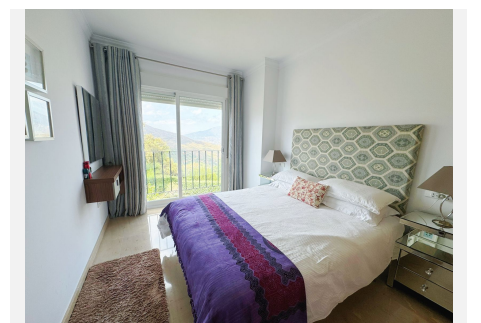
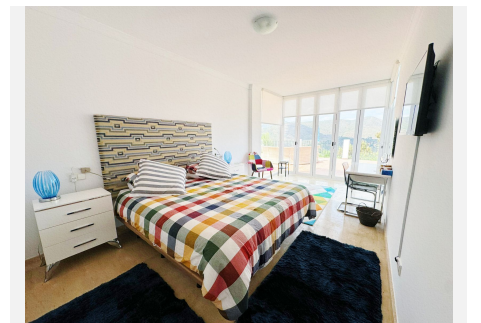
TERRACE

58 m<sup>2</sup>

CORNER UNIT IN LA MAIRENA Tranquil 2nd floor corner apartment located in the sought after area of La Mairena, an exclusive tree lined estate of enduring beauty bounded by a protected green belt that has been declared a natural biosphere reserve by the Unesco. The apartment is well presented, with good brightness and an incredible view as you enter the light-filled living & dining rooms, which seem to blend in with the large sunny terrace. The views over the forest, the mountains and all the way to the sea are truly spectacular. The terrace offers great space for sunbathing, as well as alfresco sitting and dining areas while enjoying these spectacular views. Fully equipped kitchen. 2 double bedrooms with generous wardrobes and 2 bathrooms, of which the beautiful and spacious master suite with bathroom en-suite and large private terrace is ideal to enjoy the afternoon sun during the winter month. Small development, gated community with relaxing communal pool. The apartment comes with 2 underground private parking spaces and a large storage room. Airport: 35 min drive – Puerto Banus: 20-minute drive – Marbella: 15min drive – Golf Course: 3 min drive; – Beach: 10 minutes drive. Closest bars & restaurants: 2-minute drive – Amenities: 9-minute drive – Public transport: 9-minute drive.

# IDILIQ

ESTATES



# IDILIQ

ESTATES



# IDILIQ

ESTATES

