



R4714309

 Benalmadena

REF# R4714309 349.950 €

BEDS

2

BATHS

2

BUILT

120 m<sup>2</sup>

PLOT

12 m<sup>2</sup>

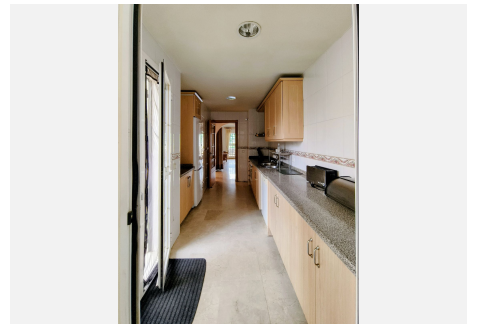
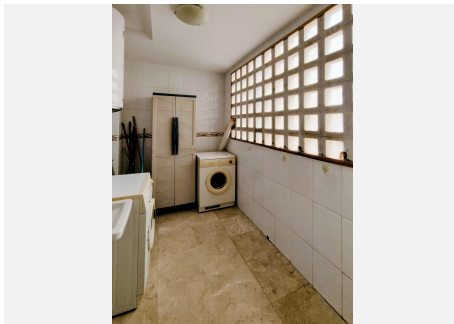
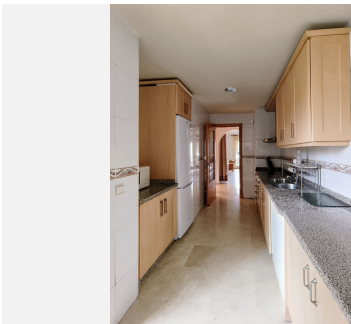
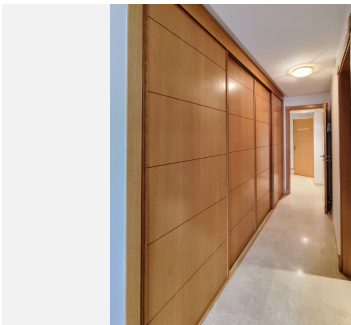
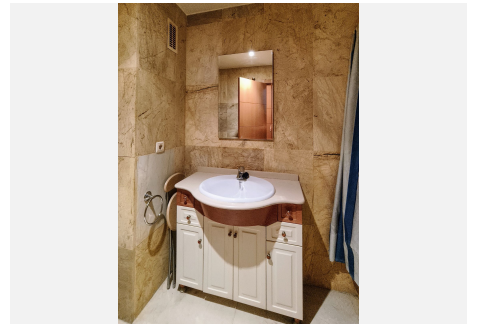
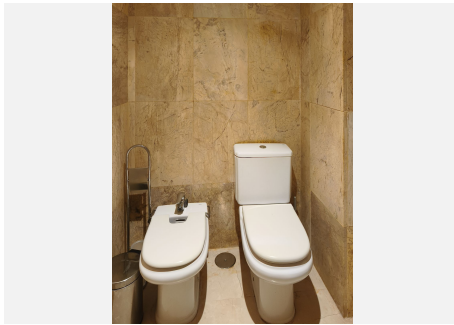
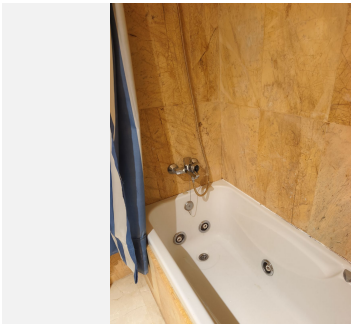
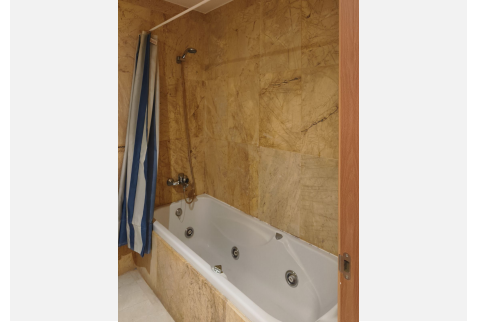
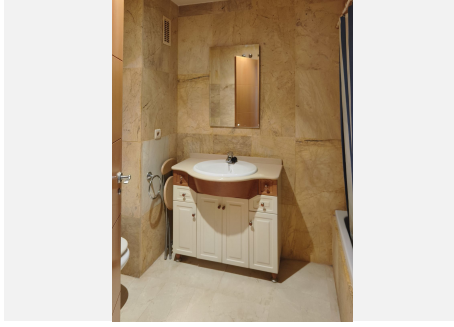
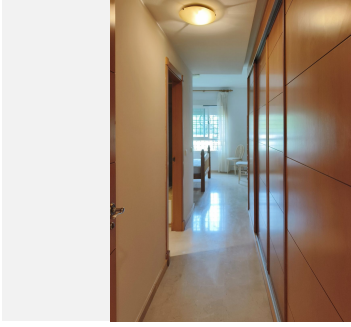
TERRACE

82 m<sup>2</sup>

"Welcome to this stunning ground floor duplex located in the prestigious Arenal Phase 1. With a spacious 200 m<sup>2</sup> constructed area, this property offers the perfect blend of comfort and style. Featuring 2 bedrooms and 2 full bathrooms, this home is ideal for families or couples looking for a spacious living space. The highlight of this duplex is the large living room, perfect for entertaining guests or enjoying family time. Step out onto the large terrace and private garden, where you can relax and soak up the sun. The full kitchen and laundry room provide convenience and practicality. Another terrace awaits you, providing a peaceful outdoor space to unwind and enjoy the fresh air. The enormous open-plan basement offers endless possibilities, from creating a home office to a separate living area. With ventilation and the possibility of creating another independent home, this property offers flexibility and potential. Residents of this community can enjoy the community pools, exclusive gym, and paddle tennis courts. The elevator ensures easy access to all floors, and two garage spaces are included in the price for your convenience. With all the comforts and amenities at your fingertips, this ground floor duplex is the perfect place to call home. Don't miss out on this incredible opportunity. Call now for more information."

# IDILIQ

ESTATES





# IDILIQ

ESTATES

