



R5386993

📍 Torremuelle

REF# R5386993 750.000 €

BEDS

3

BATHS

2

BUILT

100 m²

TERRACE

24 m²

A unique opportunity to live right by the sea in a charming apartment block in the upmarket Torremuelle area of Benalmádena Costa! Situated right next to the iconic and famous Torre Vigía, this idyllic 3-bedroom apartment, built on a hillside, offers sweeping and breathtaking views of the sea, the rocky bay and Torremuelle beach. The Mediterranean Sea stretches out before you in all its glory, offering an ever-changing spectacle from early morning until late at night. Waking up to a magnificent sunrise, reading a good book with the sound of the sea in the background, or enjoying a cosy dinner with the illuminated skyline of the Fuengirola coast in the background – this apartment offers many opportunities to fully enjoy peace, freedom and relaxation. The two terraces, covering an area of approximately 25m², offer complete privacy and, thanks to their unique east and south-west facing position, allow you to enjoy the sun all day long. The electric sunscreen provides the necessary shade when desired, together with the cooling breeze from the sea.

The large sliding glass doors on the front terrace allow plenty of light into the cosy living room, which opens onto a compact yet functional semi-open-plan kitchen featuring various built-in appliances and a small bar.

+34 951 123 083 | +44 (0)330 179 8687 | info@idiliqestates.com Local 28, Edificio D, Centro de Negocios Puerta de Banús, N-340, Km 175, 29660 Nueva Andlucia

IDILIQ

ESTATES

You can even enjoy sea views from the kitchen! The covered front terrace of 10m² is a lovely spot for breakfast and enjoying the sea view. The second open terrace next to the property, measuring approximately 15m², has space for several sun loungers and a dining table for six people, allowing you to spend the day in complete privacy. A real eye-catcher perched on the rock and right by the beach! The three spacious bedrooms are fitted with built-in wardrobes, electric heating and fans. Two bedrooms offer direct access to the open outdoor terrace. The apartment has two bathrooms, one with a shower, washbasin, washing machine and toilet, and the other with a bath with a jacuzzi function, washbasin and toilet.

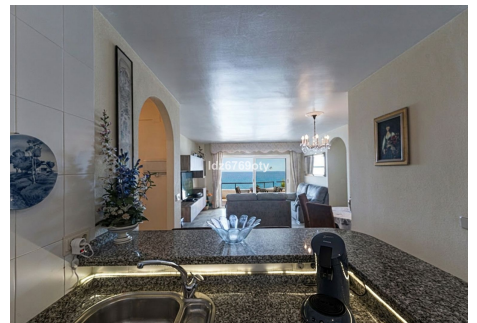
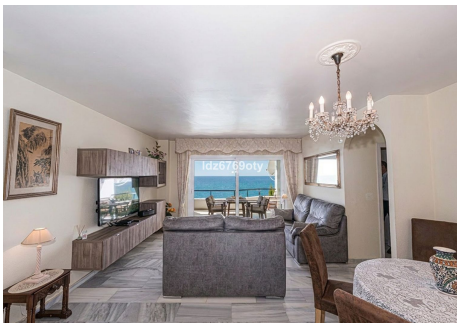
The apartment is situated on the second floor and is easily accessible via a lift at the entrance to the complex. Next to the entrance is the private, enclosed garage of approximately 25m².

The apartment complex is small-scale, comprising just 11 properties built in a historic and typically Spanish style. It is a quiet residential development with a communal swimming pool offering views of the sea, the tower of Torremuelle and the mountains of Benalmádena in the background.

This luxury apartment is situated in the popular Torremuelle district of Benalmádena Costa, within walking distance of the beach, a supermarket, various local restaurants and 'chiringuitos', and Torremuelle railway station, with connections to Fuengirola and Málaga. Benalmádena's popular marina, 'Puerto Marina', with its many entertainment options, is a 10-minute drive away. Málaga Airport is 15 km away and Marbella 35 km.

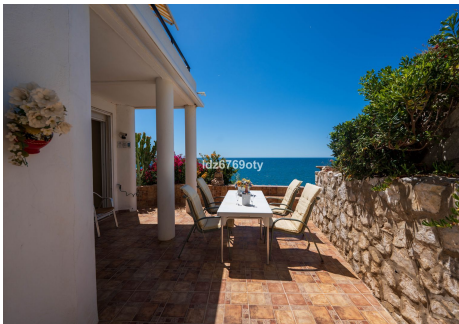
In short, a unique and peacefully situated (holiday) home with a very spacious outdoor terrace where the dynamism of the sea, the tranquillity of a bay and Spanish history literally come together right before your eyes.

Book your viewing now!



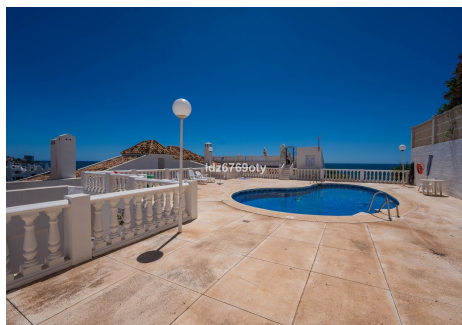
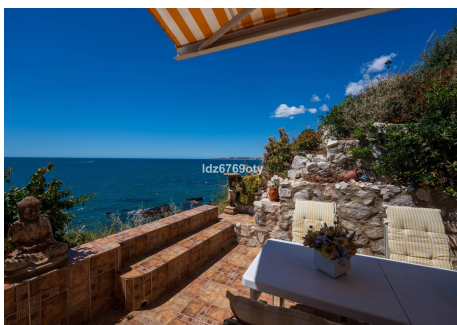
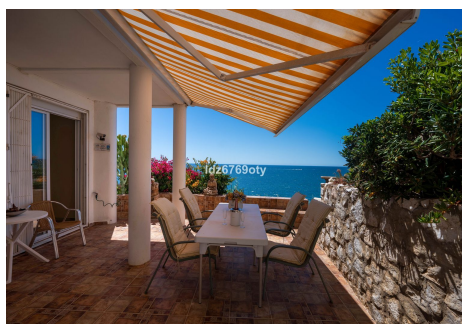
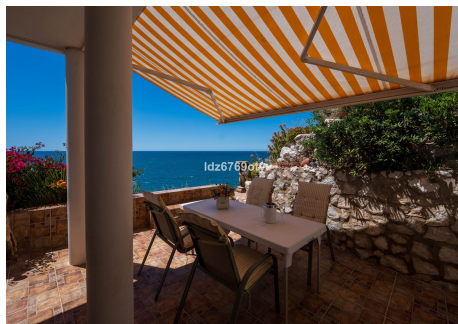
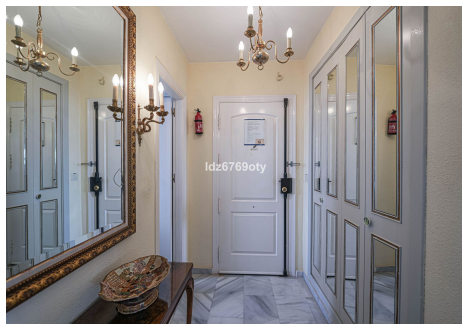
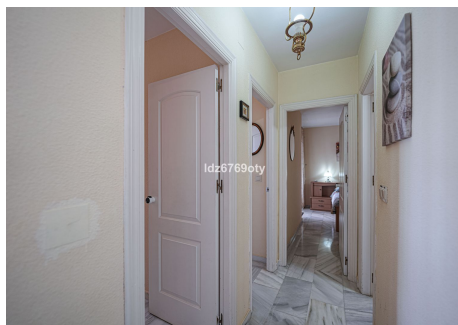
IDILIQ

ESTATES



IDILIQ

ESTATES



IDILIQ

ESTATES

