



R5174350

📍 Estepona

REF# R5174350 1.699.000 €

BEDS

4

BATHS

5

BUILT

285 m²

PLOT

564 m²

TERRACE

55 m²

Architectural elegance meets Mediterranean serenity in this beautifully designed villa, tucked within the exclusive Arboleda residential enclave—perfectly situated between Marbella, San Pedro and Benahavís.

A home crafted for effortless indoor-outdoor living, it invites long afternoons by the heated pool, vibrant dinners under the stars, and quiet mornings wrapped in garden calm. With three levels of sophisticated design, this villa blends privacy, space and style in one of the Costa del Sol's most connected yet peaceful corners.

The main floor flows naturally from the open-plan living area and designer kitchen to the manicured garden—framed by floor-to-ceiling windows that flood the space with light. A guest suite on this level ensures comfort and flexibility. Upstairs, three en-suite bedrooms offer private terraces, generous dimensions, and a standout master with walk-in wardrobe and contemporary bathroom.

The lower level adds another layer of versatility: a spacious fourth bedroom, full bathroom, separate laundry and an expansive open area perfect for a cinema, home gym, or office.

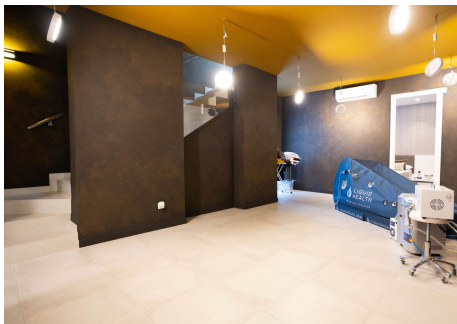
+34 951 123 083 | +44 (0)330 179 8687 | info@idiliqestates.com Local 28, Edificio D, Centro de Negocios Puerta de Banús, N-340, Km 175, 29660 Nueva Andalucía

IDILIQ

ESTATES

Surrounded by lush greenery and built on a 550 m² plot, this villa includes a private garden, heated pool, sun terrace, and secure parking. Designed in 2021, it features premium finishes, thermal insulation, full home automation, and is sold fully furnished with high-quality, stylish furniture.

A refined modern retreat, just minutes from the beach, golf courses, and international schools—where quality, comfort, and connection define everyday life.



IDILIQ

ESTATES

