

# IDILIQ

ESTATES



R4586092

📍 Coín

REF# R4586092 530.000 €

BEDS

6

BATHS

3

BUILT

248 m<sup>2</sup>

PLOT

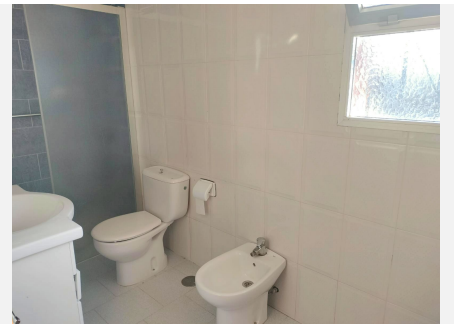
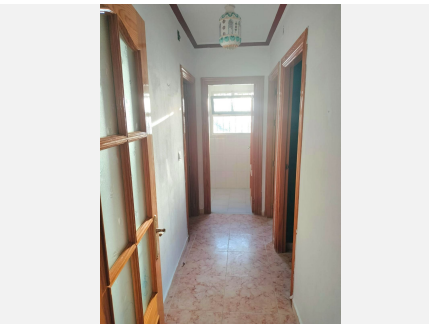
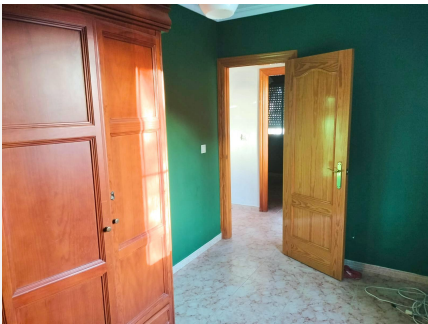
24000 m<sup>2</sup>

Discover the magic of living in a place where every sunrise is a canvas of peace and every sunset is illuminated by 20 cast iron lanterns that whisper stories of yesteryear. With 120 m<sup>2</sup> of comfort, the main house offers you three bedrooms to dream in and a bathroom to revitalise you. Next door, a promise for the future: another unfinished house of 128 m<sup>2</sup>, with three bedrooms, two bathrooms and spaces waiting to be completed with your vision. Feel the freedom of your 24,000 m<sup>2</sup> of land, breathe in the freshness of two natural wells and share unforgettable moments around a barbecue that promises to be the heart of your gatherings. The fireplace in each living room is the symbol of a warm and cosy home, and the kitchens are ready to awaken your culinary senses. Built with a double wall that promises solidity and isolation, my structure stands on fenced grounds, dotted with 14 palm trees, 8 coconut trees that give you a living landscape. Life here is an ode to tranquillity, where the only hurry is the one you decide to be in. Water will not be a concern, with a facility that does not burden your pocket and a swimming pool that invites you to summer leisure under the sun. We know that a home speaks louder than a thousand words. That is why we invite you to visit this estate where every corner tells a story and every detail is waiting to be part of yours. Come and visit me, and let yourself be enchanted by the life we can build together.

+34 951 123 083 | +44 (0)330 179 8687 | [info@idiliqestates.com](mailto:info@idiliqestates.com) Local 28, Edificio D, Centro de Negocios Puerta de Banús, N-340, Km 175, 29660 Nueva Andlucia

# IDILIQ

ESTATES



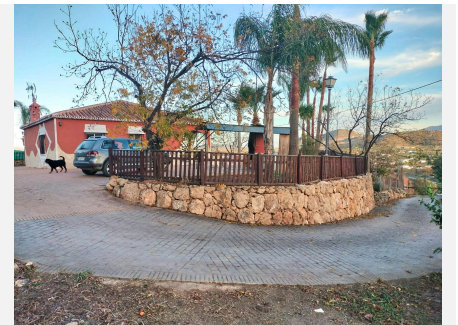
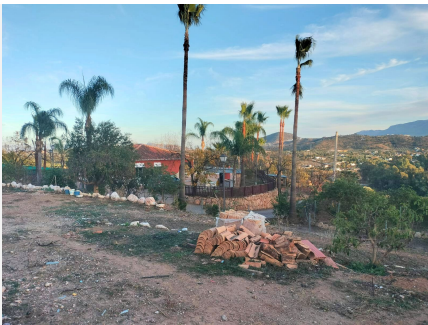
# IDILIQ

ESTATES



# IDILIQ

ESTATES



# IDILIQ

ESTATES

