



R5013880

📍 San Pedro de Alcántara

REF# R5013880 495.000 €

BEDS

3

BATHS

3

BUILT

243 m²

TERRACE

63 m²

This penthouse duplex apartment is set on the fourth floor of a quiet residential building in Campos de Guadalmina and offers 243m² of total space, including 180m² of comfortable interior living and 63m² of sunny terraces. A lift takes you directly from the underground garage up to the entrance of the apartment. The property enjoys tranquil views of La Concha mountain, the surrounding golf course, and partial sea views.

The main level features a generous and fully equipped kitchen, a large living room with fireplace, and access to one of three terraces—ideal for enjoying the open air and surrounding scenery. Also on this floor is a spacious bedroom with an en-suite bathroom and direct access to the same terrace, offering peaceful mountain views.

Upstairs, you'll find two more bedrooms. The west-facing bedroom opens onto a private terrace, perfect for enjoying the afternoon sun. The master bedroom includes a walk-in closet, an en-suite bathroom, and direct access to a large terrace with open views across the Real Club de Golf Guadalmina and out to the sea. This

IDILIQ

ESTATES

space offers plenty of room for outdoor living, whether you desire a chill-out lounge, BBQ area, jacuzzi, or even a small outdoor kitchen.

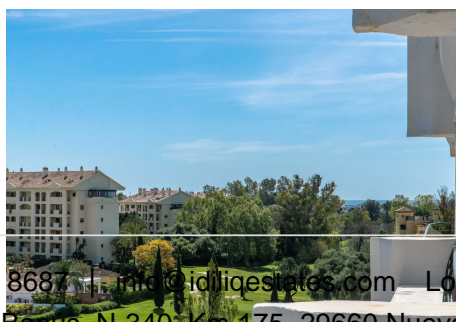
The layout of the apartment is practical and very moldable, making it an excellent option for those who may want to fully refurbish or personalize the space.

The property includes one underground parking space, with additional shared parking available on a second underground level for residents and their guests—ideal if you have multiple vehicles or visitors.

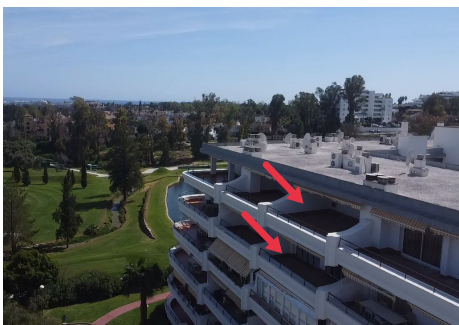
Campos de Guadalmina is a secure, well-kept residential complex with six communal swimming pools, landscaped gardens, and a relaxed atmosphere. The location is peaceful yet convenient, just an eight-minute walk to the center of San Pedro and ten minutes to the Guadalmina commercial area, where you'll find supermarkets, cafés, shops, and restaurants.

Several reputable schools are nearby, including Laude San Pedro International College, Calpe School, San José School in Guadalmina, and Swans International School.

This is a comfortable, spacious home with beautiful views in all directions and excellent potential for creating your ideal living space.



+34 951 123 083 | +44 (0)330 179 8687 | info@idiliqestates.com Local 28, Edificio D, Centro de Negocios Puerta de Danús, N-340, Km 175, 29660 Nueva Andalucía



IDILIQ

ESTATES

