



R4950502

 Nueva Andalucía

REF# R4950502 535.000 €

BEDS

3

BATHS

2.5

BUILT

156 m<sup>2</sup>

TERRACE

26 m<sup>2</sup>

Just a short stroll from the iconic Puerto Banús, this beautifully presented three-bedroom townhouse offers the perfect blend of charm, comfort, and investment potential. Set in a peaceful, well-maintained community, it provides an ideal retreat while keeping you close to the best of Marbella's vibrant lifestyle. The ground floor welcomes you with a bright, open-plan living space, where large glass doors allow natural light to pour in. These lead out to a private terrace and garden, seamlessly connecting to the lush communal gardens and a pristine swimming pool—a perfect spot to relax and unwind. For cooler evenings, the cozy fireplace in the living area creates a warm and inviting atmosphere. The fully fitted kitchen is designed for practicality and style, complete with a separate laundry area. Upstairs, the master bedroom opens onto a private balcony with lovely mountain views—an ideal place for a peaceful morning coffee. A highlight of the home is the spacious rooftop solarium, perfect for summer barbecues, evening drinks, or simply soaking up the sun. With a tourist license already in place, this property presents a fantastic opportunity for those looking to generate short-term rental income while also serving as a perfect second residence. Located just 200 meters from Mercadona and within easy walking distance of Puerto Banús' luxury boutiques, top restaurants, and lively nightlife, it offers an unbeatable combination of tranquility and accessibility. Whether as an investment or a holiday retreat, this townhouse is a rare find. For more details or to arrange a private

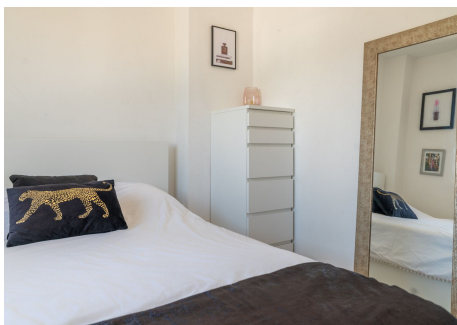
+34 951 123 083 | +44 (0)330 179 8687 | [info@idiliqestates.com](mailto:info@idiliqestates.com) Local 28, Edificio D, Centro de Negocios Puerta de Banús, N-340, Km 175, 29660 Nueva Andalucía



# IDILIQ

ESTATES

viewing, get in touch today.



+34 951 123 083 | +44 (0)330 179 8687 | [info@idiliqestates.com](mailto:info@idiliqestates.com) Local 28, Edificio D, Centro de Negocios Puerta de Banús, N-340, Km 175, 29660 Nueva Andalucía

# IDILIQ

ESTATES

