



R5052676

📍 Estepona

REF# R5052676 410.000 €

BEDS

2

BATHS

2.5

BUILT

97 m²

PLOT

53 m²

TERRACE

35 m²

Spacious Townhouse in a Well-Established, Lush Urbanisation – Prime Location Near Laguna Village and El Padrón Beach

Set within a well-established and beautifully landscaped urbanisation, this spacious and solidly built townhouse offers bright interiors, generous outdoor spaces, and an ideal location near the sought-after New Golden Mile. The community consists of just 50 properties and features first-class amenities including a large communal swimming pool and tennis court, all surrounded by mature greenery and tranquil pathways.

The home comprises a spacious, light-filled living room that opens directly onto a private garden—perfect for relaxing or entertaining. The separate kitchen includes a practical utility area, and a guest WC is located on the ground floor.

Upstairs, the property offers two large double bedrooms. The master suite includes a private terrace and en-suite bathroom, while the second bedroom is serviced by a separate family bathroom. A further staircase leads to a stunning roof terrace with panoramic sea and mountain views. Additionally, two further rooftop

+34 951 123 083 | +44 (0)330 179 8687 | [info@idiliqestates.com](mailto:info@idiliqestates.com) Local 28, Edificio D, Centro de Negocios Puerta de Banús, N-340, Km 175, 29660 Nueva Andlucia

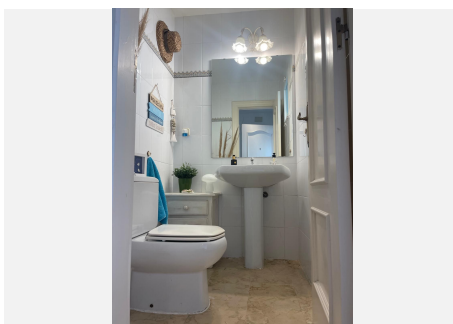
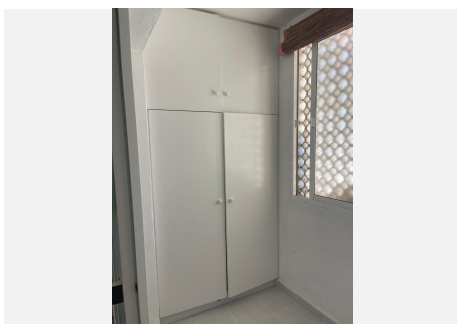
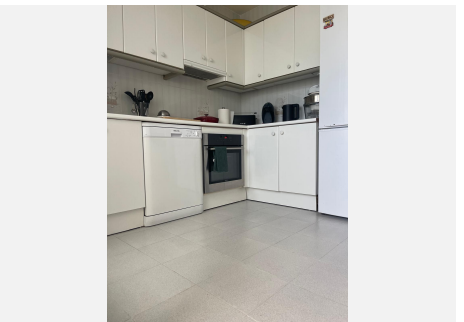
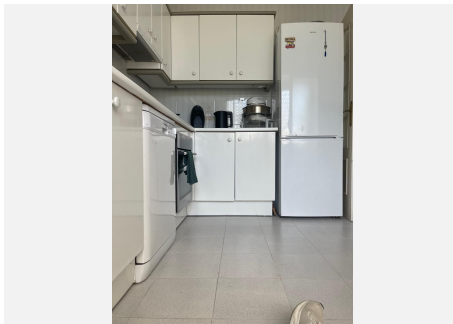
terraces offer future development potential for extra rooms, a home office, or a rooftop retreat.

#### Unbeatable Location and Connectivity:

Just a 6-minute walk to the beach, the property is opposite the newly refurbished Laguna Village, and within walking distance to El Padrón Beach and the stylish Beso Beach Bar. Everyday essentials such as an Aldi supermarket and petrol station are conveniently nearby.

From the roundabout at the end of the road, there is easy direct access to both Estepona (8 minutes) and San Pedro/Marbella, making commuting or exploring the coast effortless. The area is also well-connected by local public transport, adding to the home's overall convenience and accessibility.

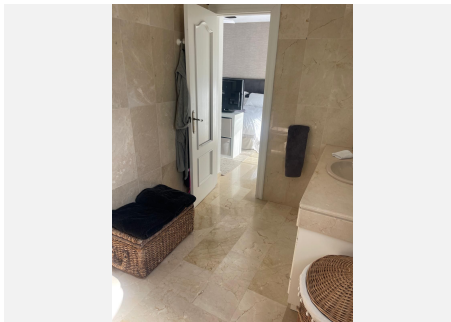
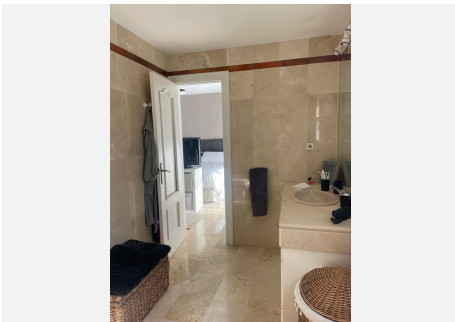
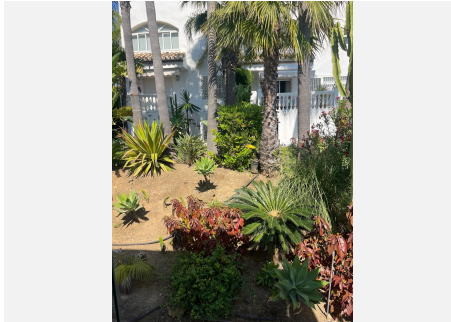
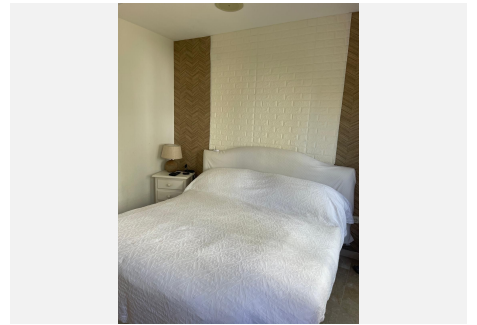
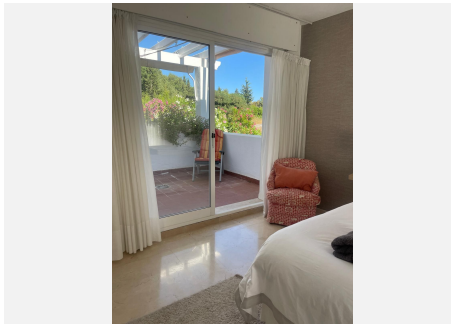
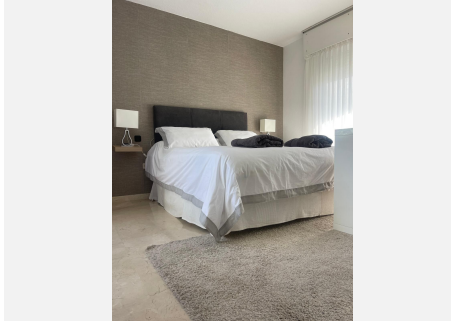
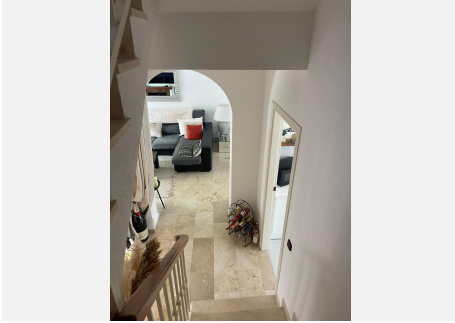
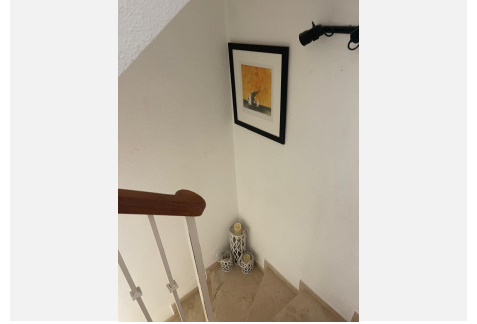
Whether you're looking for a permanent residence, holiday escape, or investment opportunity, this home delivers on space, quality, location, and lifestyle—all in one of Estepona's most desirable and well-established communities.





# IDILIQ

ESTATES



# IDILIQ

ESTATES

