



R5368972

📍 Benahavís

REF# R5368972 4.595.000 €

BEDS

5

BATHS

5.5

BUILT

625 m<sup>2</sup>

PLOT

1246 m<sup>2</sup>

TERRACE

97 m<sup>2</sup>

This contemporary villa, located in the exclusive area of La Alquería, Benahavís, offers a perfect fusion of modern design and serene surroundings. Perched in a prime position, the property boasts stunning panoramic views of the Mediterranean Sea, golf course, and picturesque mountain landscapes. Designed with meticulous attention to detail, this villa provides an unparalleled lifestyle of luxury and sophistication.

Spread across three levels, the villa features open-plan living spaces that are bathed in natural light, connecting seamlessly to expansive terraces and landscaped gardens. The gourmet kitchen is equipped with premium appliances, while the spacious living and dining areas are ideal for entertaining. With five ensuite bedrooms, including a luxurious master suite with private terrace access, every corner of the villa is designed for comfort and style.

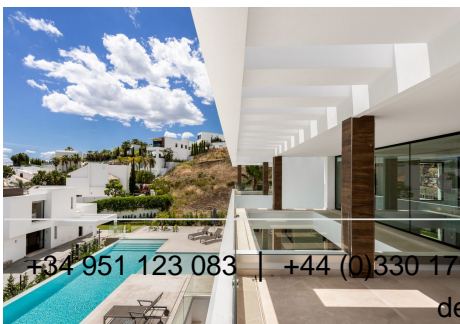
Outdoors, the villa's infinity pool is the centerpiece of a lush garden, creating a tranquil retreat to enjoy Marbella's year-round sunshine. Additional amenities include a private cinema room, a gym, and secure parking. Located just minutes from renowned golf courses, top international schools, and the vibrant attractions of Marbella and Puerto Banús, this property is the ultimate destination for those seeking a

+34 951 123 083 | +44 (0)330 179 8687 | info@idiliqestates.com Local 28, Edificio D, Centro de Negocios Puerta de Banús, N-340, Km 175, 29660 Nueva Andalucía

# IDILIQ

ESTATES

contemporary lifestyle on the Costa del Sol.



+34 951 123 083 | +44 (0)330 179 8687 | [info@idiliqestates.com](mailto:info@idiliqestates.com) Local 28, Edificio D, Centro de Negocios Puerta de Banús, N-340, Km 175, 29660 Nueva Andalucía

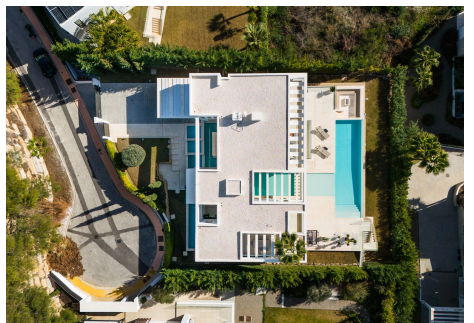
# IDILIQ

ESTATES



# IDILIQ

ESTATES



# IDILIQ

ESTATES

