



R5422747

📍 Marbella

REF# R5422747 1.450.000 €

BEDS

4

BATHS

3

BUILT

209 m<sup>2</sup>

TERRACE

98 m<sup>2</sup>

An authentic manor apartment in the heart of Marbella, with the spaciousness and character of old houses. Its generous rooms, the stunning terrace and its privileged orientation, which floods the house of natural light all day, make this property a difficult opportunity to find. Located in an unbeatable location, one step away from all services and the promenade, it is a residence combining space, elegance and exceptional quality of life. The house has two accesses: the main entrance and a service entrance.

The main entrance gives way to a generous and elegant entrance hall, which harmoniously distributes the rest area. The house has four large bedrooms, highlighting the master suite, which has en suite bathroom and direct access to the magnificent terrace. The three remaining bedrooms, two of them also with access to the terrace, share two full bathrooms, offering a comfortable, functional and perfectly adapted distribution to the needs of a family or those who enjoy receiving guests.

On the left of the entrance hall is a spacious and bright living-dining room, a perfect space to enjoy both daily life and meetings with family and friends. From here you can access a large independent kitchen, very spacious and functional, which also has an independent laundry room. In this area you will find the entrance

# IDILIQ

ESTATES

of service of the house, a direct access from the exterior that allows you to comfortably enter the kitchen without having to pass through the entrance hall or the living room, a characteristic especially practical for the day to day, the service staff or the reception of shopping.

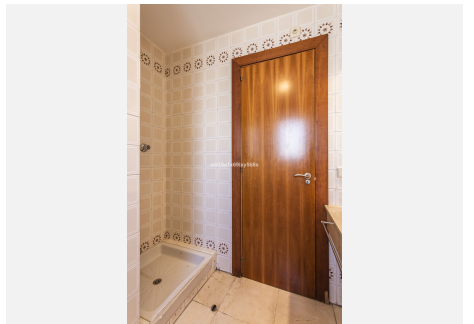
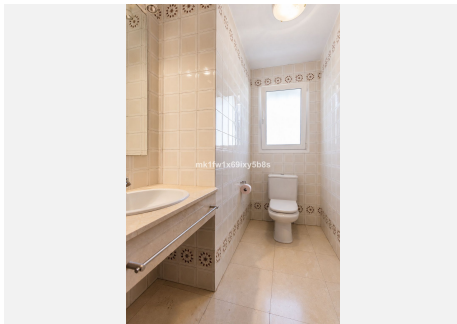
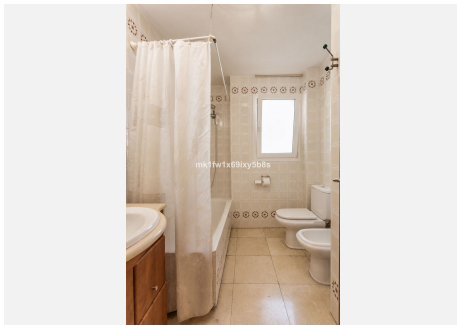
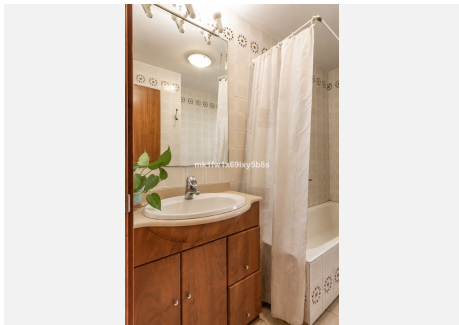
Both the living room and the kitchen have direct access to the spectacular terrace, of extraordinary dimensions, which extends the sensation of space and allows you to enjoy the excellent climate of Marbella throughout the year. The terrace also has an independent area for clothing and a supportive toilet, providing a plus of comfort and functionality.

The current distribution offers an excellent base, but one of the great attractions of this property is its enormous customization potential. The spaciousness of the spaces allows you to rethink the distribution to create more bedrooms with en-suite bathroom or adapt this area completely to size, giving rise to an exclusive and designed housing according to the lifestyle of its new owners.



# IDILIQ

ESTATES



# IDILIQ

ESTATES

