



MIDDLE FLOOR APARTMENT 2 BEDROOMS 2 BATHROOMS IN RIVIERA DEL SOL

 Riviera del Sol

REF# R4890169 275.000 €

BEDS

2

BATHS

2

BUILT

85 m²

TERRACE

50 m²

Experience Luxury Living at Riviera Golf – Your Dream Home Awaits! Step into a world of elegance and tranquility in the exclusive Riviera Golf residential complex. This stunning 132 m² apartment (80 m² of usable space) is designed for comfort and luxury, offering a serene lifestyle in a gated community with top-notch security. Key Features You'll Love: Spacious & Bright Interiors: The apartment boasts 2 bedrooms and 2 bathrooms, including a master suite for added privacy. The cozy living room flows seamlessly onto a 40 m² double terrace, where you'll enjoy breathtaking south-facing views of the lush pool area and swaying palm trees. A Terrace Built for Memories: Equipped with a dining table and barbecue, this expansive outdoor space is perfect for al fresco dining and entertaining friends and family. Elegant Details Throughout: Air-conditioned rooms, luxurious marble flooring, and a thoughtfully designed layout provide a sophisticated touch. Resort-Style Amenities: Three sparkling swimming pools surrounded by lush gardens and sun loungers. Expansive green spaces to unwind and connect with nature. Prime Location: Convenience meets exclusivity: Just 5 minutes by car to pristine beaches, lively bars, and fine dining. Quick access to the A7 road and AP7 motorway for seamless travel. 20 minutes to Marbella and 30 minutes to Málaga Airport. A supermarket is only a 4-minute drive away. Perfect for Your Lifestyle: Whether you're searching for a

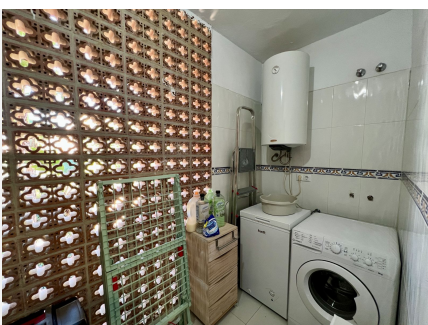
+34 951 123 083 | +44 (0)330 179 8687 | info@idiliqestates.com Local 28, Edificio D, Centro de Negocios Puerta

de Banús, N-340, Km 175, 29660 Nueva Andlucia

IDILIQ

ESTATES

second home or a lucrative real estate investment, this exterior ground-floor gem ticks every box. Built in 2003 and in excellent condition, it includes: A dedicated parking space. Electric heating with a hot/cold pump. A lift for easy access. With its south and east-facing orientation, this apartment fills your days with natural light and warmth. Don't let this opportunity pass you by! Contact us today to learn more or schedule a private viewing of this extraordinary property. Your Riviera Golf dream home is just a call away!



IDILIQ

ESTATES

