



R5147437

📍 The Golden Mile

REF# R5147437 5.390.000 €

BEDS

3

BATHS

3.5

BUILT

588 m²

TERRACE

351 m²

This exceptional duplex penthouse is located within Epic Marbella on the Golden Mile, one of the most prestigious addresses in Marbella. Designed to impress, the property spans 586 m², including 351 m² of sun-soaked terraces, all facing southwest with panoramic views of the Mediterranean Sea and La Concha mountain.

The interiors exude refined elegance, with Fendi Casa contributing to both the kitchen and custom wardrobes. The kitchen is equipped with premium Gaggenau appliances and seamlessly flows into open-plan living areas that connect directly to expansive outdoor spaces.

There are three en-suite bedrooms and a guest toilet, offering space and privacy. This newly constructed residence includes two private parking spaces, a storage room, and a private garden, enhancing both convenience and lifestyle.

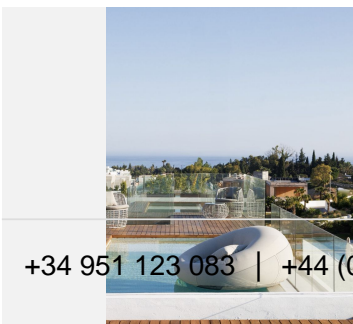
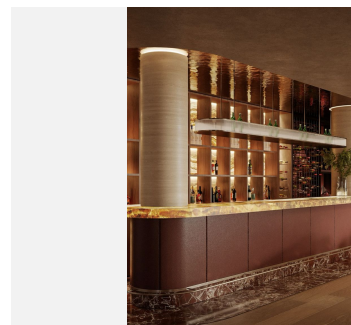
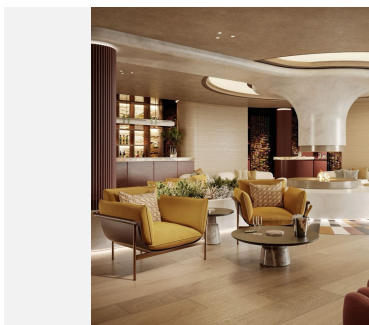
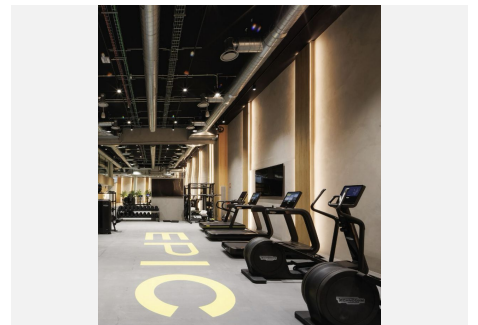
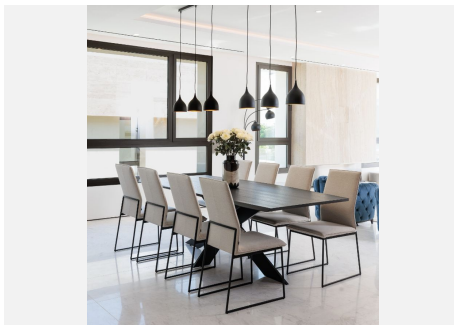
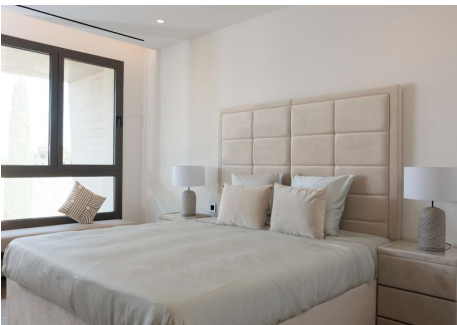
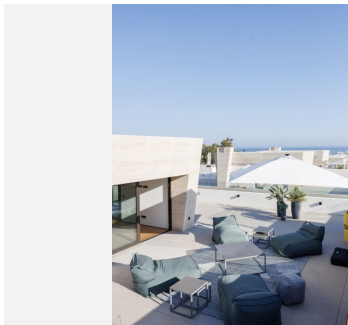
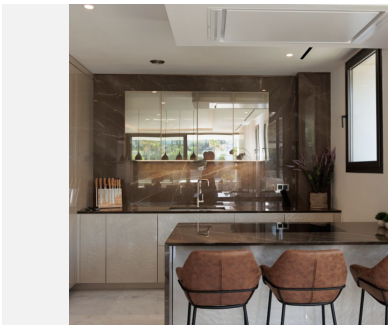
Epic Marbella offers a level of luxury rarely seen, featuring a Fendi-furnished Social Club, a serene private spa with an indoor pool, and an exceptional wellness centre including tennis, padel, football, Technogym-

+34 951 123 083 | +44 (0)330 179 8687 | info@idiliqestates.com Local 28, Edificio D, Centro de Negocios Puerta de Banús, N-340, Km 175, 29660 Nueva Andalucía

IDILIQ

ESTATES

equipped gym, yoga and Pilates studio, HIIT area, and golf simulator.



+34 951 123 083 | +44 (0)330 179 8687 | info@idiliqstates.com Local 28, Edificio D, Centro de Negocios Puerta de Banús, N-340, Km 175, 29660 Nueva Andlucia