

IDILIQ

ESTATES



R4671907

📍 Istán

REF# R4671907 4.750.000 €

BEDS

7

BATHS

5

BUILT

469 m²

PLOT

39750 m²

TERRACE

394 m²

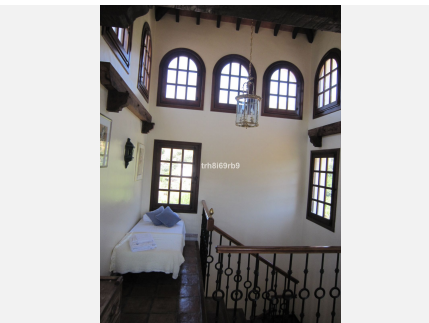
A spectacular 7 bedroom luxury lake side villa situated in a very private location, with spectacular views of the Istán lake from almost every room of the house, with a lovely mountain backdrop.. This truly luxurious Cortijo has more than a touch of film star ambience and is a perfect choice for those who want all the privacy and tranquility of a secluded holiday villa, yet still within a short 15 minute drive from Puerto Banús and Marbella, so is also ideal as a full time family home. In addition to the 6 actual bedrooms, the property also has space for beds in the top of the tower and a fully self contained 1 bed apartment. There are amazing lake views from most rooms of the house. With beautiful manicured gardens, a stunning large private pool and double garage, the villa is built in traditional Andalucian style around a central courtyard with fountain and tower. Just 45 minutes from Malaga Airport, this the perfect villa for a perfect Spanish hideaway or could be further developed as a boutique hotel, subject to planning approval, but there is a general willingness within the local planning to department to approve projects which bring employment to the area and promote rural tourism. Further details available on request. Finca - Cortijo, Istán, Costa del Sol. 7 Bedrooms, 4 Bathrooms, Built 469 m², Terrace 394 m², Garden/Plot 39750 m². Setting : Country. Orientation : South West. Condition : Excellent. Pool : Private. Climate Control : Air Conditioning, Fireplace. Views : Mountain, Panoramic, Lake. Features : Covered Terrace, Fitted Wardrobes, Private Terrace, Guest

+34 951 123 083 | +44 (0)330 179 8687 | info@idiliqestates.com Local 28, Edificio D, Centro de Negocios Puerta de Banús, N-340, Km 175, 29660 Nueva Andlucia

IDILIQ

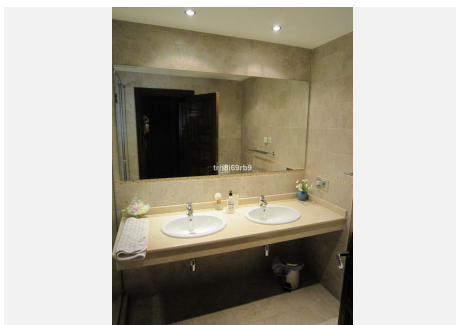
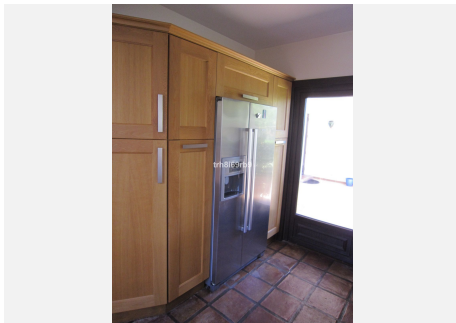
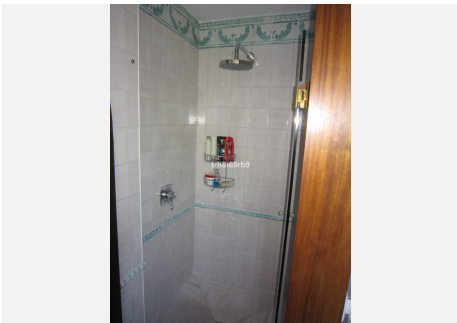
ESTATES

Apartment, Storage Room, Utility Room, Barbeque, Double Glazing. Furniture : Optional. Kitchen : Fully Fitted. Garden : Private, Landscaped. Security : Entry Phone. Parking : Garage, Open, More Than One. Utilities : Electricity, Drinkable Water. Category : Resale.



IDILIQ

ESTATES



IDILIQ

ESTATES



IDILIQ

ESTATES

