



R5336257

📍 Manilva

REF# R5336257 799.000 €

BEDS

4

BATHS

3

BUILT

160 m<sup>2</sup>

TERRACE

86 m<sup>2</sup>

**Elegant Townhouse with Panoramic Sea Views!**

Discover exceptional living in this stunning townhouse within the sought-after urbanisation where breathtaking panoramic views stretch across the Mediterranean Sea to Gibraltar and the Atlas Mountains of Morocco.

Designed for comfort, privacy, and modern Mediterranean living, this home offers the perfect balance between tranquility and convenience.

Ideally located in a peaceful natural setting, the property is just minutes from the beach, local shops, restaurants, and the prestigious Sotogrande marina, while the vibrant town of Estepona is only a 15-minute drive away.

As one of the finest homes in the complex, this spacious townhouse features 4 bedrooms and 3 bathrooms, thoughtfully distributed across multiple levels.

A private garage with space for two cars provides direct access to the house and a converted basement, offering ample storage and versatility.

The ground floor welcomes you with a bright entrance leading to a bespoke open-plan designer kitchen fitted with state-of-the-art appliances. The elegant living and dining area opens onto a south-facing terrace

+34 951 123 083 | +44 (0)330 179 8687 | [info@idiliqestates.com](mailto:info@idiliqestates.com) Local 28, Edificio D, Centro de Negocios Puerta

de Banús, N-340, Km 175, 29660 Nueva Andlucia

# IDILIQ

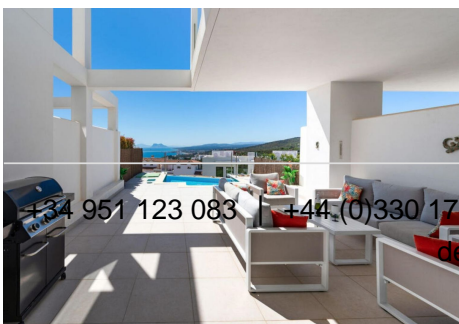
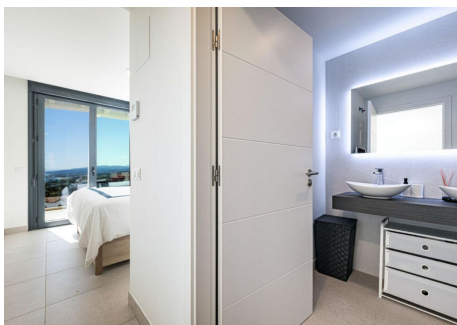
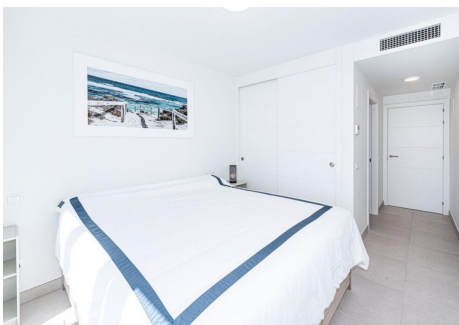
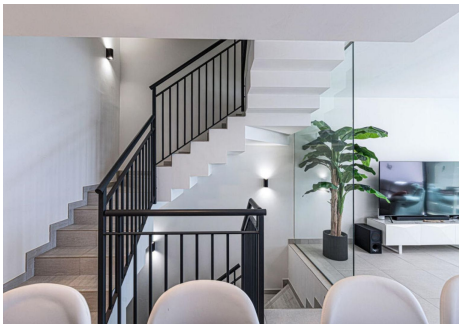
ESTATES

and private garden, where you can enjoy all-day sunshine and relax by your own infinity pool while taking in uninterrupted sea views.

Upstairs, the first floor hosts three bedrooms, including a luxurious master suite with en-suite bathroom, along with two additional bedrooms sharing a modern bathroom. The top floor is dedicated to a fourth bedroom with its own bathroom and walk-in wardrobe, as well as access to a spectacular rooftop terrace—perfect for entertaining or simply soaking in the sweeping coastal views.

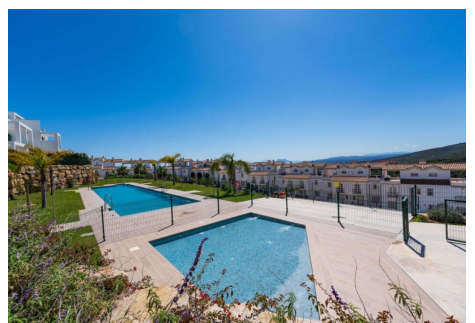
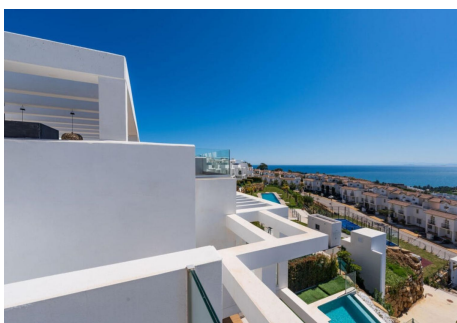
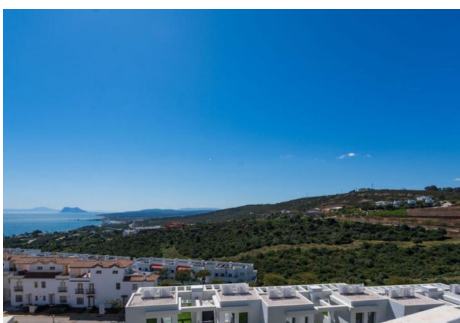
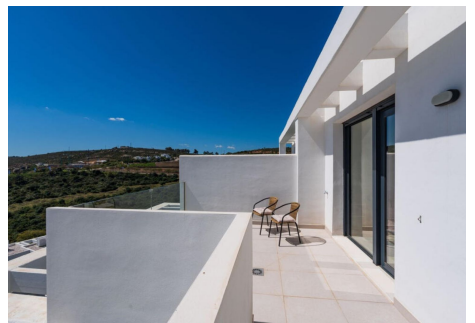
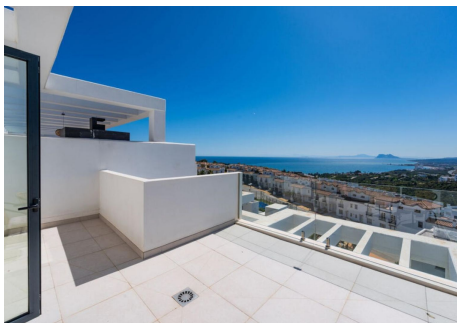
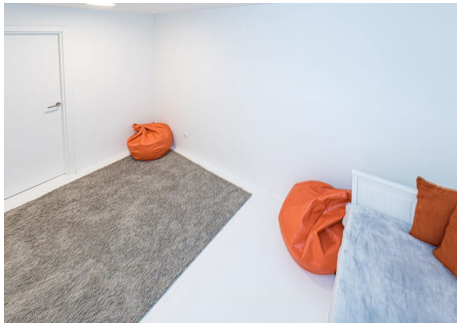
Residents of this urbanisation also benefit from excellent communal amenities, including a swimming pool, paddle tennis court, and a children's play area.

Whether you are searching for a luxurious holiday retreat or a permanent residence on the Costa del Sol, this exceptional townhouse offers an unparalleled lifestyle defined by space, views, and the beauty of the Mediterranean.



# IDILIQ

ESTATES



# IDILIQ

ESTATES

