



R4785532

📍 La Mairena

REF# R4785532    349.950 €

BEDS

2

BATHS

2

BUILT

89 m<sup>2</sup>

TERRACE

29 m<sup>2</sup>

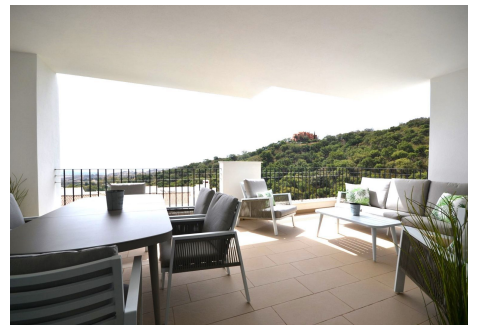
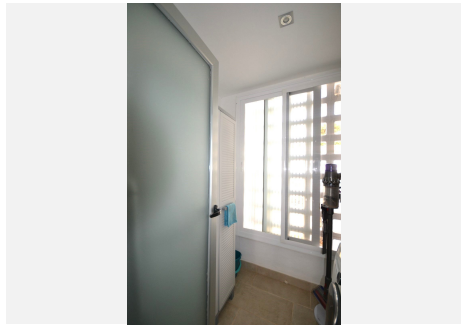
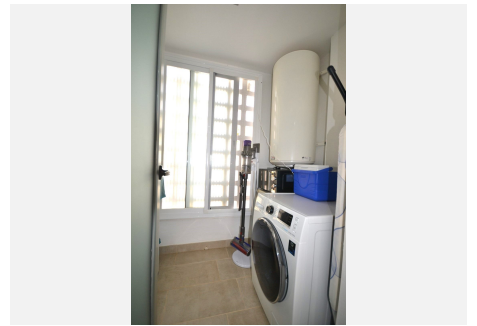
This contemporary 2 bedroom apartment for sale in La Mairena, offers breathtaking panoramic views of the Mediterranean Sea, coastline, mountains, and forest. The property combines modern design with the tranquility of nature, creating a perfect haven for those seeking a serene yet luxurious lifestyle. Upon entering the entrance gate from the road, you are greeted with a conveniently located private parking space directly opposite the entrance to the block. The apartment's entrance is on the same level as the road, ensuring easy access. The apartment boasts a spacious open-plan living, dining, and kitchen area. The living space seamlessly extends to a partially open and closed private terrace, accessible from both the living room and the master bedroom, offering stunning views and a perfect spot for relaxation. Built to the highest standards, the apartment features contemporary design elements, large windows to maximize natural light, and high-quality finishes throughout. La Floresta Sur is nestled in the picturesque hills of La Mairena, above Elviria on the eastern side of Marbella. This modern development offers a serene lifestyle, surrounded by a UNESCO biosphere reserve, providing residents with unparalleled views of the Mediterranean Sea and Andalusian mountains. Ideal for nature enthusiasts, the community offers numerous walking trails and outdoor activities in the surrounding forested area. Despite its tranquil setting, it is just a short drive from the beaches of Elviria, several golf courses, and the vibrant town centers of Marbella and

+34 951 123 083 | +44 (0)330 179 8687 | [info@idiliqestates.com](mailto:info@idiliqestates.com) Local 28, Edificio D, Centro de Negocios Puerta de Banús, N-340, Km 175, 29660 Nueva Andlucia

# IDILIQ

## ESTATES

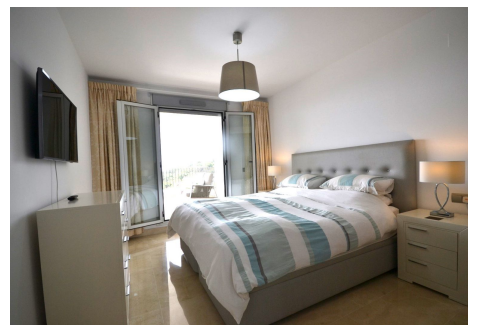
Puerto Banús. Close proximity to the renowned German College and a few minutes' walk from El Soto Golf, with free access to El Soto Golf club which includes a 9 hole par 3 golf course, Tennis and Padel Courts, Gym, Sauna, Turkish Bath, Hydro-SPA, putting green, children's playground and a superb bar-restaurant with free wifi, beautiful terraces, BBQ area and evening entertainment. A short 5-minute drive will take you to the famous 36-hole La Cala Golf Course and the Santa Maria Golf Course, ensuring plenty of recreational options for residents. La Mairena is known for its luxurious villas, townhouses, and modern apartments, all designed to blend seamlessly with the picturesque landscape. This prestigious residential area, nestled in the hills above Elviria, is renowned for its natural beauty and tranquility. Residents enjoy a peaceful lifestyle with access to several amenities, including international schools, golf courses, and tennis clubs. The serene enclave offers breathtaking views of the Mediterranean Sea and lush green mountains, providing a perfect balance of nature and luxury. This apartment in La Floresta Sur represents a prime investment opportunity, combining modern luxury with natural beauty. Whether you are looking for a permanent residence, a holiday home, or a lucrative rental property, this development offers it all. For more information or to arrange a viewing, please contact us





# IDILIQ

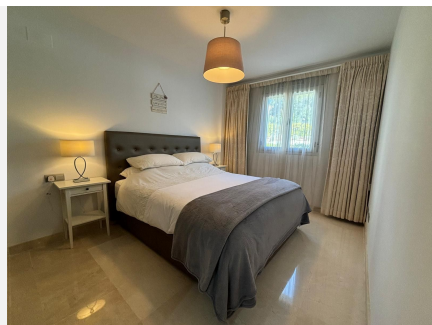
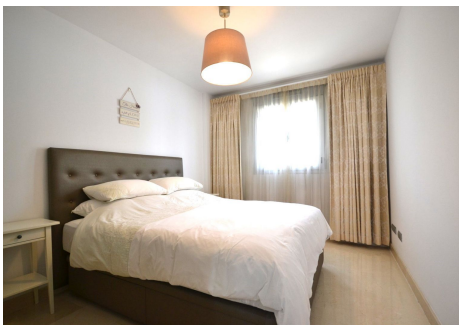
ESTATES





# IDILIQ

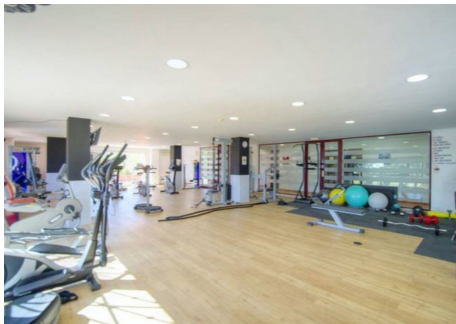
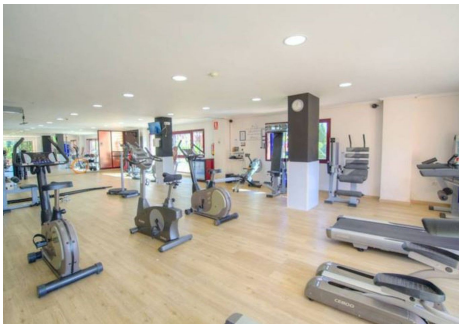
ESTATES





# IDILIQ

ESTATES





**IDILIQ**  
ESTATES

