



MAGNIFICENT FINCA WITH 11,441.00 M2 OF PLOT, AFO AND CONDITIONED FOR THE TENENCE OF HORSES

 Coín

REF# R4351510 599.000 €

BEDS

6

BATHS

3

BUILT

600 m²

PLOT

11441 m²

Magnificent Finca with 11,441.00 m2 of plot, AFO and conditioned for the tenence of horses. With a large house and facilities that add up to 600 m2 built. 6 bedrooms, 2 bathrooms, 1 toilet, stables and garage. This incredible property is located in a peaceful natural environment with great views, but at the same time close to the urban environment of Coín. The house, with 220 useful m2 developed on 2 floors, has access on the ground floor through a porch that communicates with a beautiful kitchen, a toilet, a large living room - dining room and another spacious living room. Both living rooms have access to different covered terraces, swimming pool and gardens. On the first floor we have 6 fresh and bright large bedrooms, two bathrooms and direct communication with the pool area. Apart from what has been previously described, the property has the following facilities with access from the ground floor: garage (28 m2), a large warehouse (84 m2) separated into two rooms and ideal for installing your workshop or warehouses, and comfortable stables (43 m2) for 4 animals. The house is southeast facing, all windows are double glazed with shutters and security bars, stoves in both living rooms and split air conditioning units (hot and cold) in all rooms. The location of the house, just 7 minutes from the commercial sector of Coín and 14 minutes from its center, has completely paved access routes. The airport and the center of Malaga are just over 30 minutes away, and

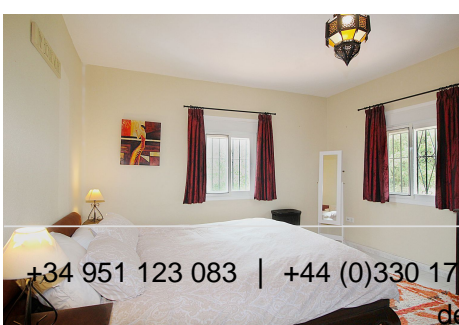
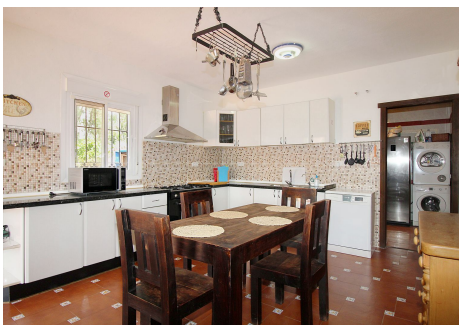
+34 951 123 083 | +44 (0)330 179 8687 | info@idiliqestates.com Local 28, Edificio D, Centro de Negocios Puerta

de Banús, N-340, Km 175, 29660 Nueva Andlucia

IDILIQ

ESTATES

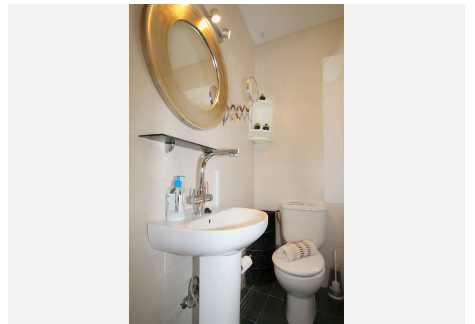
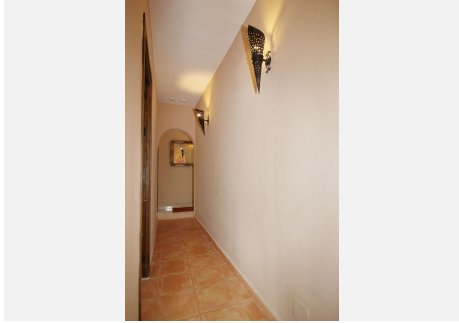
the center of Marbella less than 45 minutes.



+34 951 123 083 | +44 (0)330 179 8007 | info@idiliqestates.com Local 28, Edificio D, Centro de Negocios Puerta de Bajas, N-340, Km 175, 29660 Nueva Andalucía

IDILIQ

ESTATES



IDILIQ

ESTATES



IDILIQ

ESTATES

