



## A BEAUTIFUL SEMI-DETACHED HOUSE IN THE PRESTIGE URBANISATION OF SANTA CLARA GOLF WITH 24 HOUR SECURITY.

📍 Santa Clara

REF# R4232590 575.000 €

BEDS

2

BATHS

3

BUILT

152 m<sup>2</sup>

TERRACE

171 m<sup>2</sup>

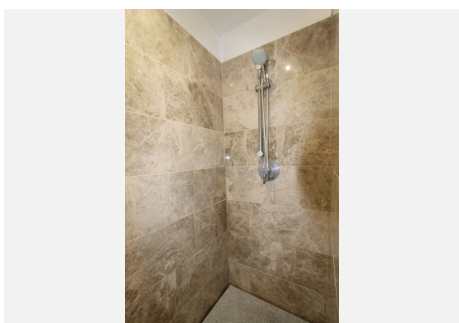
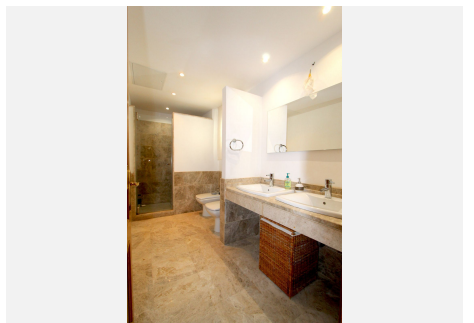
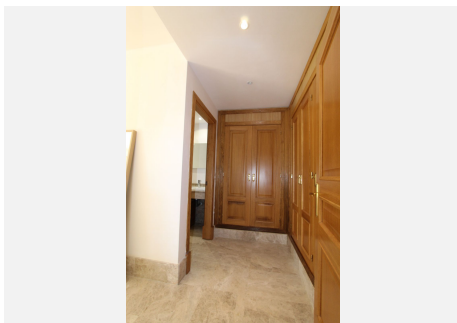
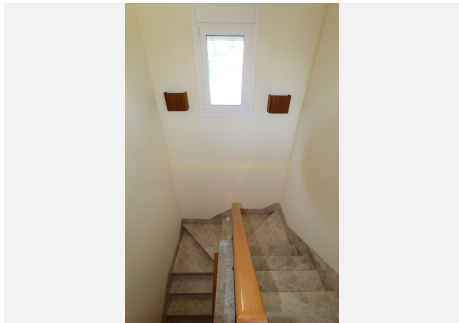
A beautiful semi-detached house in the prestige urbanisation of Santa Clara Golf with 24 hour security. This spacious, south facing house has an open plan living and dining room leading out to a good size terrace (42m<sup>2</sup>). On the same level you will find the kitchen and a guest WC. From the terrace you have an external staircase to an enormous roof top terrace, which is a great chill out area with a big double size sun bed, Jacuzzi and stunning Sea views (85m<sup>2</sup>). On the lower level you will find two spacious bedrooms, both en-suite with a big wardrobe areas. Both rooms are leading out to a nice patio terrace (44m<sup>2</sup>) & the private garden. The Urbanisation is very well looked after with manicured gardens & a beautiful pool for the exclusive use of their residents. Santa Clara is situated in Marbella East and only a five minute drive into Marbella Centre. The beach with its sandy dunes are also less than 2,5km away. On the doorstep you have on the right Santa Clara Golf course with it's fabulous Restaurant and also the Marbella Golf & Country Club with a fantastic club house & restaurant. The property has 2 allocated parking spaces. This Property is a must see! Don't miss out!

+34 951 123 083 | +44 (0)330 179 8687 | [info@idiliqestates.com](mailto:info@idiliqestates.com) Local 28, Edificio D, Centro de Negocios Puerta de Banús, N-340, Km 175, 29660 Nueva Andlucia



# IDILIQ

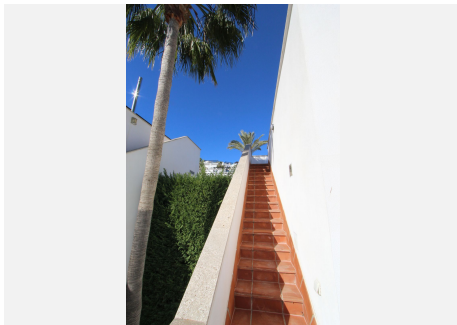
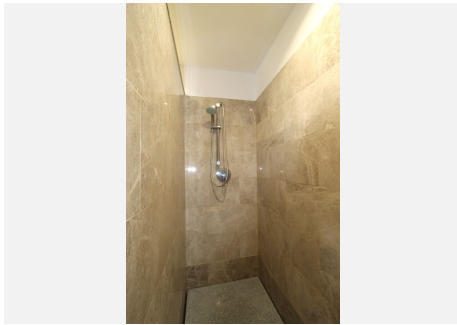
ESTATES





# IDILIQ

ESTATES



# IDILIQ

ESTATES

