



LUXURY TOWNHOUSE WITH PRIVATE PLUNGE POOL IN THE HEART OF LA CALA DE MIJAS

 La Cala de Mijas

REF# R4797169 890.000 €

BEDS

4

BATHS

3

BUILT

180 m²

Luxury Townhouse in the Heart of La Cala de Mijas Discover this exclusive three-story luxury townhouse, newly painted, decorated, and furnished, located in a prestigious development in the heart of La Cala de Mijas, designed to offer maximum comfort and style. Key Features: - Double Parking Space: Upon entering, we find the basement with a laundry area equipped with a washer and dryer, a storage space, and a multifunctional room. - First Floor: The main entrance leads to a double bedroom, a full bathroom, an open kitchen, and a spacious living-dining area. From here, you access a bright terrace with a dining area and chillout zone, ideal for relaxing and enjoying. - Second Floor: Three well-distributed bedrooms and two full bathrooms, one of them en suite. -Spacious Solarium: Climbing the stairs, we reach a solarium with stunning panoramic and sea views, featuring a private pool and space for an outdoor kitchen. Perfect for enjoying the Mediterranean climate. Common Areas: - Mature Gardens: Beautiful and well-maintained. Three Community Pools: Ideal spaces for swimming and socializing, one of them perfect for children. - Changing Rooms and Showers: Additional amenities for residents. 24-Hour Concierge and Video Surveillance: Security and attention assured. Unbeatable Location: Surrounded by supermarkets, schools, restaurants, and cafes. Two minutes from the old town and a seven-minute walk to the beach, with easy

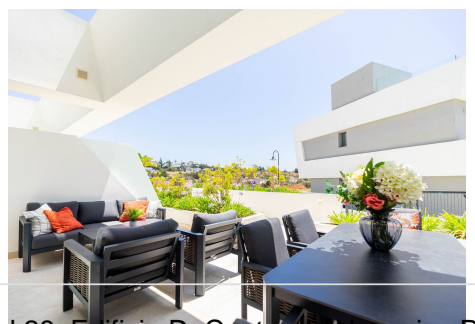
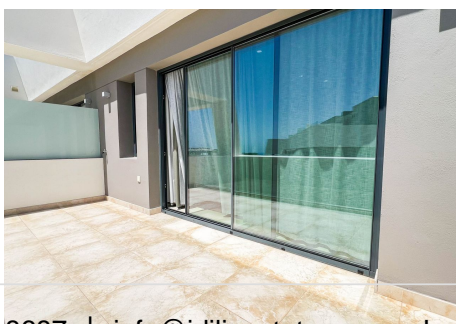
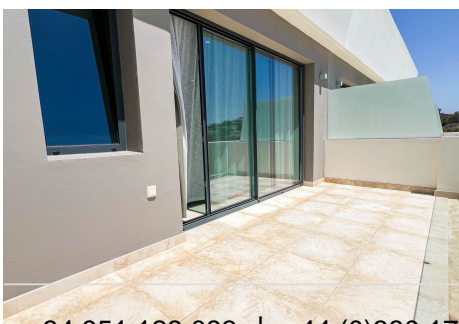
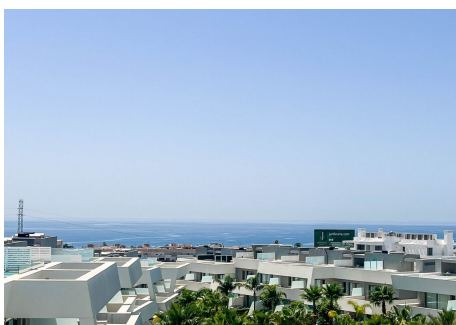
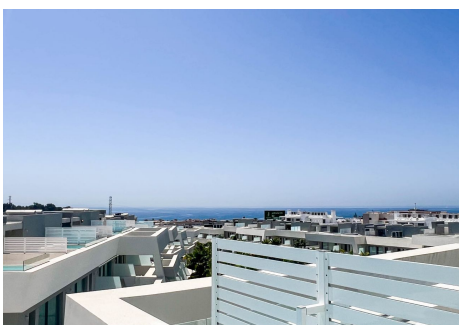
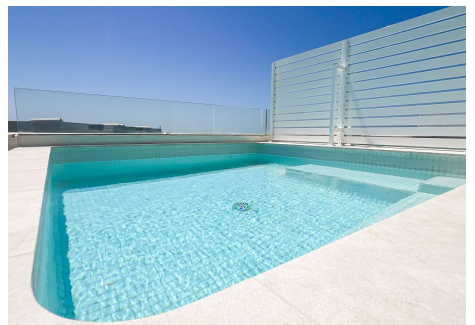
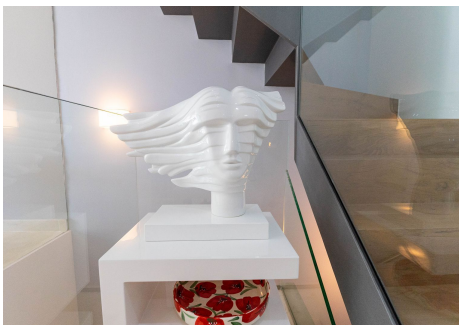
+34 951 123 083 | +44 (0)330 179 8687 | info@idiliqestates.com Local 28, Edificio D, Centro de Negocios Puerta

de Banús, N-340, Km 175, 29660 Nueva Andlucia

IDILIQ

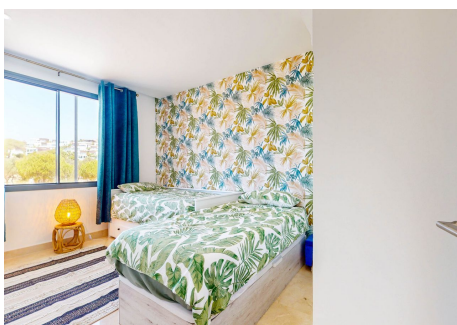
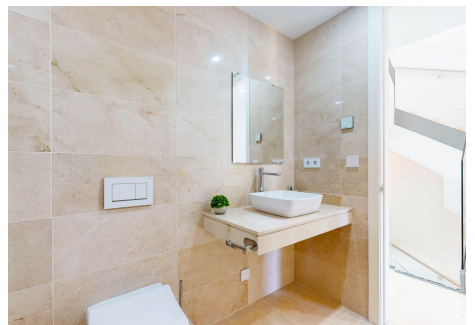
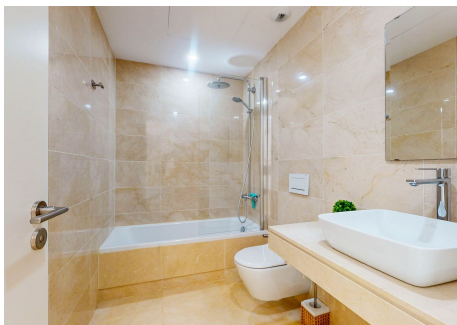
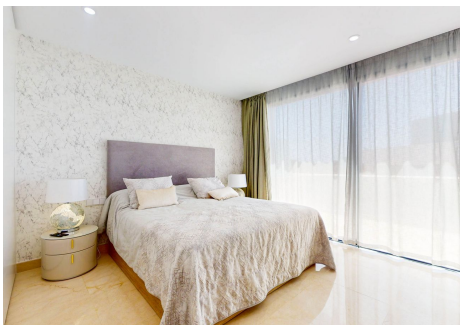
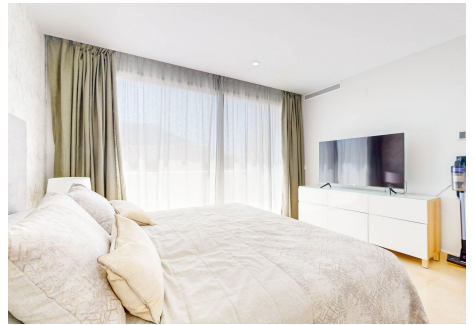
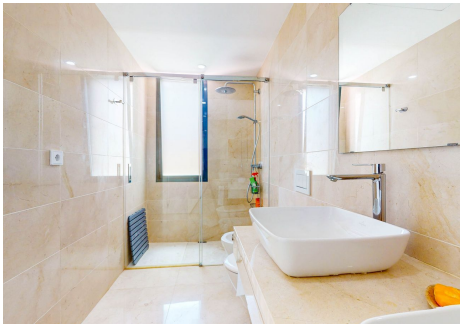
ESTATES

access to the highway. Specifications: - Underfloor heating (except in the basement) with hot/cold air conditioning using economical Daikin Altherma technology. - Modern and contemporary design, spacious, bright, and open plan. - Highest quality finishes and specifications: luxury kitchens equipped with Siemens appliances. - Superior quality off-white marble flooring extending to the terrace area. - Premium bathrooms with Villeroy and Boch fittings and Grohe taps. - Pre-installation for Domotics central home intelligence system. - High-quality windows and doors. Expenses: IBI: €1256.44/year Community: €1189/quarter This extraordinary enclave offers a spacious, luxurious, and functional home, perfect for those seeking an exclusive residence in a prime location. Don't miss the opportunity to live in this paradise!



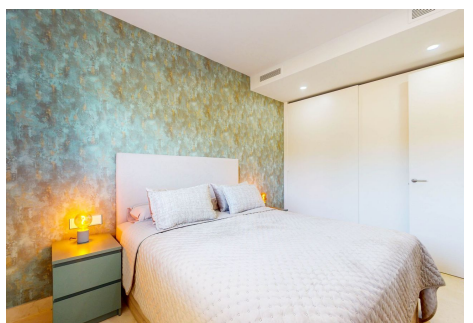
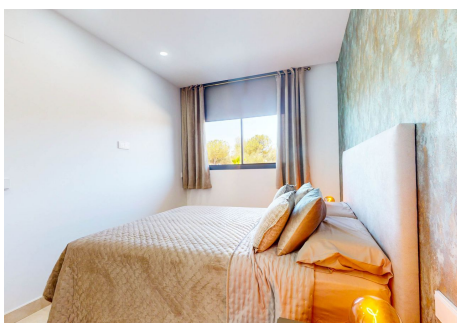
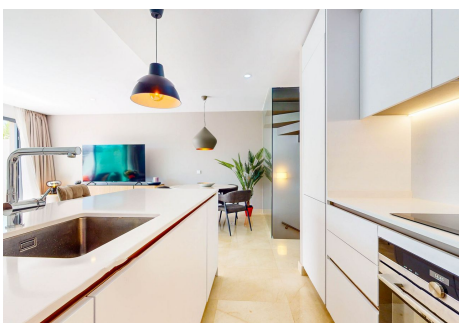
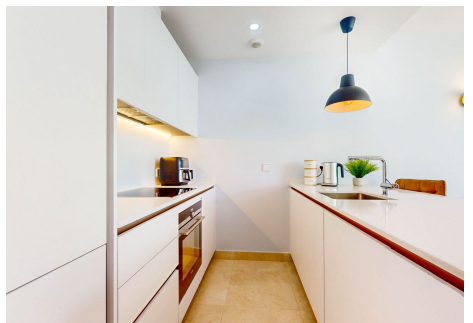
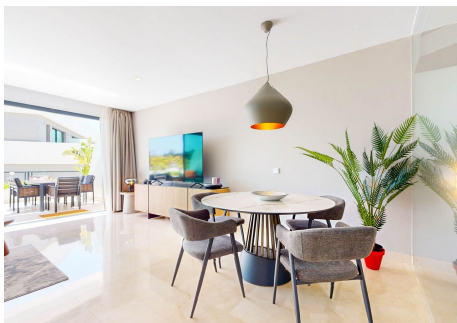
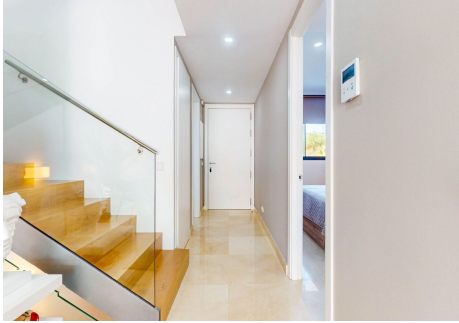
IDILIQ

ESTATES



IDILIQ

ESTATES



IDILIQ

ESTATES

