



MIDDLE FLOOR APARTMENT 2 BEDROOMS 2 BATHROOMS IN BENAHAVÍS

 Benahavís

REF# R4789228 335.000 €

BEDS

2

BATHS

2

BUILT

77 m²

TERRACE

12 m²

Beautiful, fully furnished 2 Bed 2 Bath apartment with Panoramic views of La Concha Mountain, El Paraíso Golf Course and the Mediterranean Sea.

This practical hassle-free investment offers the perfect blend of resort hotel services and amenities with the independence of an apartment. Enjoy access to multiple swimming pools, lush gardens, a co-working space, and a professionally equipped gym.

The resort is a serene haven on the edge of El Paraiso Golf, and close to Villa Padierna Golf, Tramores Golf, Atalaya Golf, and Guadalmina Golf. Located at the intersection of Marbella, Estepona, and Benahavís, this prime spot ensures proximity to stunning beaches, top-notch golf courses, and a plethora of coastal activities.

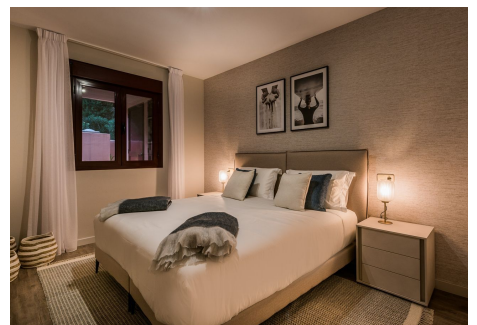
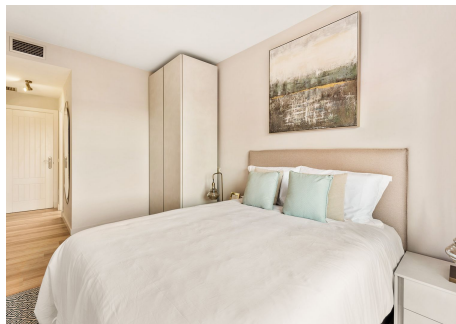
The resort's rental program makes owning a Marbella property effortless, allowing you to enjoy a fully serviced resort while also benefiting from consistent rental income potential.

+34 951 123 083 | +44 (0)330 179 8687 | info@idiliqestates.com Local 28, Edificio D, Centro de Negocios Puerta de Banús, N-340, Km 175, 29660 Nueva Andlucia

Parking and Storage optional.

*The interior photos provided are for illustrative purposes and may not correspond to the actual property.

We are pleased to announce a small selection of available units, prices ranging from 245.000 € to 449.000 €. Contact us today for more information



IDILIQ

ESTATES

