



## CHARMING SEMI-DETACHED HOUSE IN CORTIJO TORREQUEBRADA, BENALMÁDENA

📍 Benalmadena

REF# R4776175 649.000 €

BEDS

4

BATHS

3

BUILT

300 m<sup>2</sup>

PLOT

50 m<sup>2</sup>

TERRACE

50 m<sup>2</sup>

Charming Semi-Detached House in Cortijo Torrequebrada, Benalmádena Discover your personal oasis on Benalmádena's coveted Camelia Street, where charm and comfort merge in this captivating 4-bedroom home. This semi-detached house is perfectly situated just a 5-minute walk (400 meters) from the beach, offering an ideal blend of tranquility and convenience. Property Details: - Built Area: 300 m<sup>2</sup> - Plot Size: 400 m<sup>2</sup> - Bedrooms: 4 spacious bedrooms - Bathrooms: 3 modern bathrooms - Floors: 3 - Parking space included in the price Features: - Terrace and Balcony: Enjoy outdoor living with ample terrace and balcony space. - Garden: Private garden area for residents, perfect for families and children. - Air Conditioning: Stay cool and comfortable year-round. - Swimming Pool: Take a refreshing dip in the community pool. - Storage Room: Additional storage space for your convenience. - Fitted Wardrobes: Built-in wardrobes in the bedrooms. Recent Upgrades: - Newly Painted: The entire house has been recently painted, giving it a fresh, modern look. - Renovated Bathrooms: Enjoy updated, stylish bathrooms. Prime Location: - Beach Access: Only 400 meters from the beautiful Costa del Sol beach. - Nearby Amenities: Within a 15-minute walk, you'll find essential services and leisure options. - Transportation: Conveniently located half an hour from the airport and the high-speed train station. With its prime location, spacious design, and recent updates, this

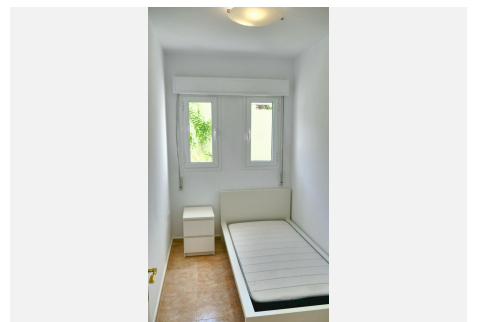
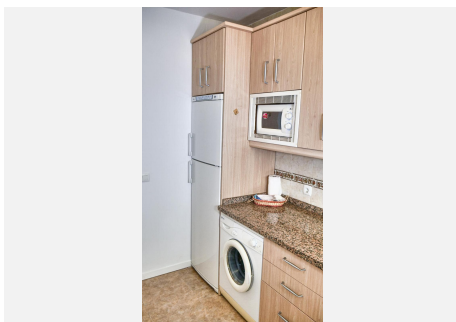
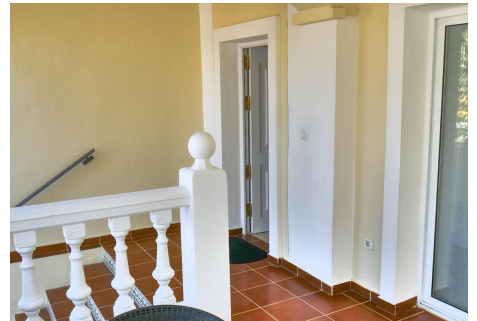
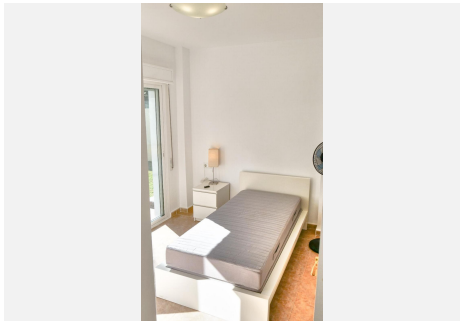
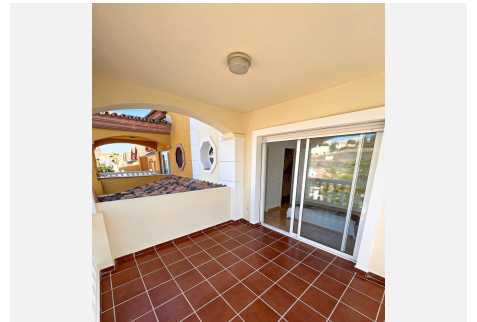
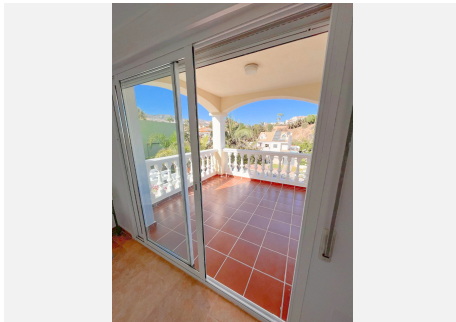
+34 951 123 083 | +44 (0)330 179 8687 | info@idiliqestates.com Local 28, Edificio D, Centro de Negocios Puerta de Banús, N-340, Km 175, 29660 Nueva Andlucia



# IDILIQ

## ESTATES

property offers an exceptional opportunity to enjoy the best of Benalmádena. Contact us today for more information and to schedule a viewing.



+34 951 123 083 | +44 (0)330 179 8687 | [info@idiligestates.com](mailto:info@idiligestates.com) Local 28, Edificio D, Centro de Negocios Puerta de Banús, N-340, Km 175, 29660 Nueva Andalucía



# IDILIQ

ESTATES

