



WONDERFUL MIDDLE FLOOR APARTMENT IN NUEVA ANDALUCÍA WITH STUNNING SEA VIEWS!

 Nueva Andalucía

REF# R4767670 515.000 €

BEDS

2

BATHS

2

BUILT

110 m²

TERRACE

26 m²

Wonderful Middle floor apartment in Nueva Andalucía with stunning sea views! Welcome to this fantastic property located in the heart of Nueva Andalucía, Marbella. This beautifully designed property boasts 100 m² of living space, offering a comfortable and luxurious lifestyle. Key Features: - Living Space: The apartment features two generously sized bedrooms and two modern bathrooms, providing ample space for relaxation and privacy. - Terraces: Enjoy the Mediterranean climate with three private terraces, perfect for outdoor dining, sunbathing, or simply taking in the breathtaking views. - Communal Amenities: The urbanization offers outstanding communal facilities, including two large swimming pools and two dedicated children's pools, ensuring fun and safety for all family members. - Location: Situated just a 10-minute walk from the beach and the vibrant Puerto Banus port, you'll have easy access to some of the best dining, shopping, and entertainment options Marbella has to offer. - Proximity: The apartment is conveniently close to Centro Plaza shopping center and the Nueva Andalucía Bull Ring, making daily errands and activities effortless. - Views: Marvel at the amazing views of the sea and the iconic La Concha mountain from the comfort of your home. - This apartment is a perfect blend of comfort, convenience, and luxury, ideal for those seeking a prime location in Marbella. Don't miss the opportunity to make this exceptional property

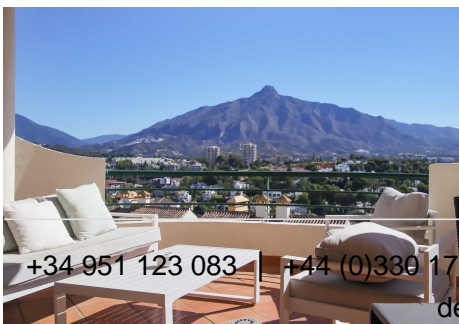
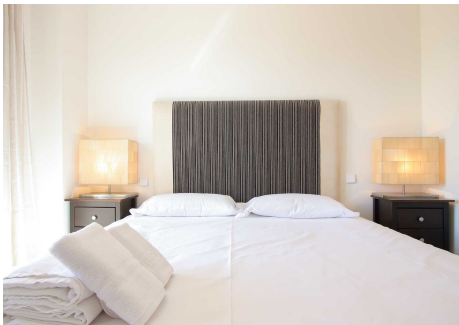
+34 951 123 083 | +44 (0)330 179 8687 | info@idiliqestates.com Local 28, Edificio D, Centro de Negocios Puerta

de Banús, N-340, Km 175, 29660 Nueva Andalucía

IDILIQ

ESTATES

your new home!



+34 951 123 083 | +44 (0)330 179 8687 | info@idiliqestates.com Local 28, Edificio D, Centro de Negocios Puerta de Banús, N-340, Km 175, 29660 Nueva Andalucía

IDILIQ

ESTATES

