




UNIQUE OPPORTUNITY TO PURCHASE A NEW BUILD HOME WITH 3 BEDROOMS

 La Cala de Mijas

REF# R4766638 695.000 €

BEDS

3

BATHS

2

BUILT

240 m²

PLOT

160 m²

TERRACE

43 m²

Unique Opportunity to purchase a New Build home with 3 bedrooms within walking distance of La Cala de Mijas. Delivery is expected at the end of 2024, the house is equipped with almost all possible options. Corner house with the following layout: Entrance, living room with open kitchen (including built-in Bosch appliances) and access to terrace and garden. Guest toilet. Stairs up and down. First floor: parents' bedroom with fitted wardrobes and terrace, modern en-suite bathroom with double sink, walk-in shower and toilet. Bedroom 2 and 3 also equipped with built-in wardrobe and a second bathroom also equipped with sink, shower and toilet. Downstairs (basement level) a storage room and technical room and a garage for 1 car. The list of options for this corner house: Spacious terrace on living room level that goes around the corner (std) Elevator to all 3 floors (extra) Recessed spotlights with LED in all rooms (extra) Roller shutters in all bedrooms and living room (std) Roller shutters electrically operated (extra) Home Automation for lighting, air conditioning and shutters (extra) Ceramic hob Bosch (std) Bosch refrigerator-freezer (std) Built-in microwave Bosch (extra) Dishwasher and washing machine Bosch (std) Drawer unit in each bedroom in the built-in wardrobe (extra) Both bathrooms with walk-in shower (extra) Mirrors with LED lighting in both bathrooms (extra) Alarm installation with 5 detectors (extra) Natural grass in the garden (std) Built 240m²

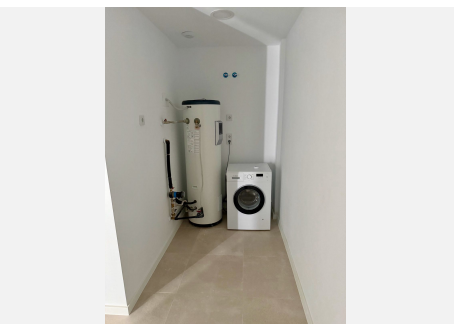
+34 951 123 083 | +44 (0)330 179 8687 | info@idiliqestates.com Local 28, Edificio D, Centro de Negocios Puerta

de Banús, N-340, Km 175, 29660 Nueva Andlucia

IDILIQ

ESTATES

Nett floor 164m2 Terraces 43m2 + garden Contact us for more details and floorplans. The handover can take place at the end of 2024.



+34 951 126 083 | +44 (0)330 179 8687 | info@idilicestates.com - Local 28, Edificio D, Centro de Negocios Puerta de Banús, N 340, Km 175, 29660 Nueva Andalucía

IDILIQ

ESTATES

