



PRESTIGIOUS RESIDENTIAL COMPLEX

📍 Carvajal

REF# R4102357 822.000 €

BEDS

2

BATHS

2

BUILT

84 m²

TERRACE

30 m²

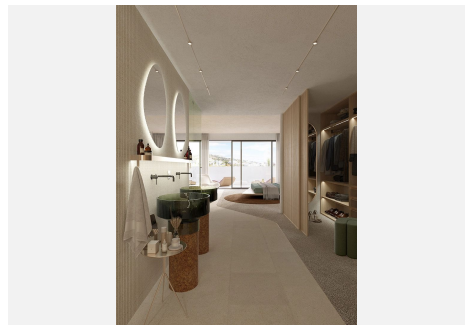
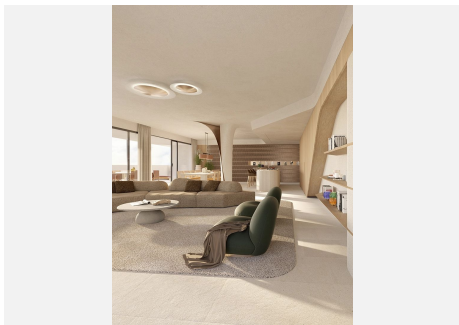
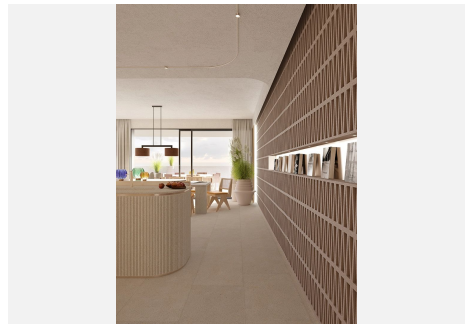
A prestigious residential complex located in a privileged location with breathtaking panoramic views of the Mediterranean Sea and only 200 metres from the beach. It is situated close to amenities, restaurants, shops and recreational activities. The exclusivity of the architectural design used is the result of meticulous work with special attention to each of its elements. Its character and uniqueness can be perceived in the decisions that have been taken and materialised in the spaces that make up the project. Its surroundings and location are a true reflection of international luxury in the heart of Reserva del Higuierón. Its multiple connections and its proximity to the beach have made it a world reference. We are your luxury residential brand. We have created the concept to offer you a life of excellence, creating a habitat of your own thanks to the perfect harmony between the sun and the sea, two key elements that led us to choose the location in the heart of the Costa del Sol, Benalmádena Costa, a perfect intermediate point between the most popular locations, i.e. Malaga, the capital, and Marbella, a benchmark of exclusivity and international luxury. Main features: - Modern design: a modern and elegant architectural design, with clean lines and a combination of high-quality materials. - Open and luminous spaces: The property has large windows that allow all the light that characterises the Costa del Sol to flood in. All the rooms have been designed to provide comfort and functionality. - Panoramic views: Enjoy breathtaking panoramic views from various areas of the house,

+34 951 123 083 | +44 (0)330 179 8687 | info@idiliqestates.com Local 28, Edificio D, Centro de Negocios Puerta de Banús, N-340, Km 175, 29660 Nueva Andalucía

IDILIQ

ESTATES

allowing you to admire the landscape and enjoy beautiful sunsets. - **Luxury finishes:** The luxurious finishes and high-quality materials used in the construction of the property reflect meticulous attention to detail. - **Private garden:** The building boasts an exquisitely landscaped private garden, ideal for relaxing outdoors, spending time with friends and family, or simply enjoying the tranquillity. - **Modern facilities:** The house is equipped with the latest amenities and technologies for comfortable and convenient living. **Other details:** - **Great customisation options:** So that each property is unique, adapting to your tastes and needs. - **Parking and storage:** The complex has ample underground parking space for vehicles, plus a car lift and a storage room for each property. - **Security:** 24/7 security measures throughout the community. - **Amenities:** Residents will enjoy an outdoor infinity pool, indoor heated pool, yoga and pilates area, gym, green areas, coworking area and a leisure area with bar. In short, the project is a commitment to exclusivity and luxury with an unbeatable location due to its proximity to the sea and the main cities of the Costa del Sol. If you are interested in scheduling a visit to learn more or if you have any further questions, please do not hesitate to contact us.



IDILIQ

ESTATES

