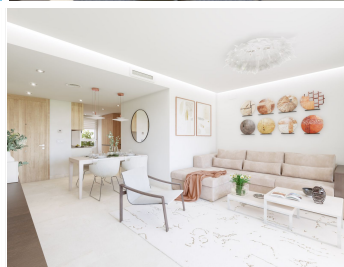
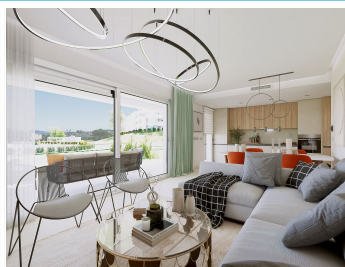


IDILIQ

ESTATES



NEW DEVELOPMENT: PRICES FROM €310,000 TO €545,000

 La Cala Golf

REF# R4216993 **400.000 €**

BEDS

2

BATHS

2

BUILT

80 m²

TERRACE

23 m²

New apartments and penthouses for sale in Costa del Sol, Spain. The residence is being built at the top of the hill overlooking the Europa Golf Course, in a fabulous position that provides panoramic views of the golf course and some of them to the sea. All the apartments are East or South facing, meaning that they enjoy plenty of light all day long. Located near to the Club House and the Hotel & Spa, where owners of properties in the Resort can take advantage of the benefits and discounts provided by the Privilege Card. Ideal for families looking for a holiday home or investors looking for a property to rent out for the summer season with a good return. The project is split over two independent plots with 105 and 90 apartments, integrated into a common architectural concept. The first line golf apartments are near the hotel, the Clubhouse and the sport area and SPA. The first phase is already underway, with 48 apartments in five buildings with 3 storeys each. All the apartments have large terraces with glass balcony enclosures so that you can fully enjoy the fabulous views of the golf course and the apartments on the ground floor also have private gardens with views of the pool, resort gardens and the golf course that surrounds the development. The homes have a modern distribution with the "total living" concept where all the space is utilised, and with a large living room integrating the terrace via the large windows. The homes are fully equipped, with fitted wardrobes, air

+34 951 123 083 | +44 (0)330 179 8687 | info@idiliqestates.com Local 28, Edificio D, Centro de Negocios Puerta

de Banús, N-340, Km 175, 29660 Nueva Andalucía

IDILIQ

ESTATES

conditioning, fitted kitchen with appliances, LED lighting package and fully fitted bathrooms with unit, mirror and shower screen. There is also an extras package available to personalise your home. The residential is gated and has different parking options: outdoor and indoor. There is also an adult pool, infant splash pool and communal gardens overlooking the valley. Estimated completion date: Phase 1: August 2024 Phase 2: March 2025



IDILIQ

ESTATES

