



## LUXURY MEDITERRANEAN 16 BED PALACE IN PARAISO ALTO

 El Paraiso

REF# IE22538 8.990.000 €

BEDS	BATHS	BUILT	PLOT	TERRACE
16	16	1337 m <sup>2</sup>	7100 m <sup>2</sup>	500 m <sup>2</sup>

A luxury mediterranean palace with 16 bedrooms, combined of Main House, Guesthouse, Staff House, located in area El Paraiso Alto, Benahavis, surrounded by the best golf courses in Costa del Sol.

### The Main Villa

The main house has three floors and a separate entrance lower level.

The entrance hall of the main floor takes you directly to an enormous beautiful living room that is connected all around with an amazing terrace that leads you to the swimming pool.

The living room, dining room area and relaxation area with a bar are all in the same open space, the kitchen is separated but also has access to the same terrace that surrounds this part.

One bedroom with a private bathroom and dressing room is located at this floor and has an opening to the lovely terrace as well.

The top floor of this main house has four bedrooms.

# IDILIQ

## ESTATES

Two master bedroom suites with private bathrooms and dressing areas.

They all have private terraces from where you can enjoy the lovely garden and views of the mountain and sea.

### Lower Level

There is a separate entrance at this main villa that has a lower level.

It has a en-suite bedroom facing to the pool.

### Guesthouse

The second house of this ranch is a smaller villa which can be considered as a guesthouse with three floors. The entrance of the house takes you to the main floor which has two bedrooms, two bathrooms, private dressing rooms and terraces.

This side of the house is connected to the swimming pool shared with the main villa.

The living and dining room area are actually situated at on the lower level.

There is a separate dining room and living room plus a spa room.

The top floor of this smaller villa has the master bedroom with a huge bathroom, dressing room and chill out room.

It also has a spacious terrace that allows you to view amazing panoramas.

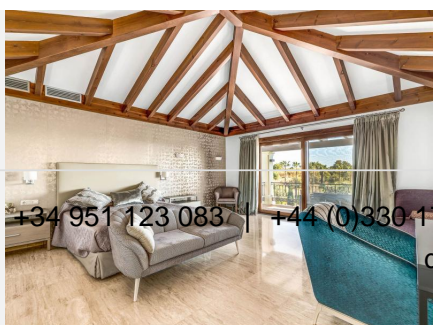
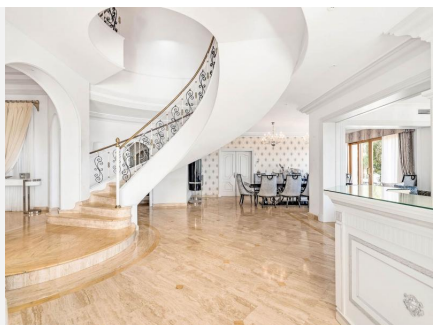
### Annex

The last house of this amazing ranch is actually a annex considered as staff apartments. These are three Apartments, one on the lower part and two on the upper part.

The house is surrounded by lush, mature tropical gardens with huge lawned areas, a super sized private swimming pool with terracing and sun deck, private garage parking as well as driveway parking.

A super rare opportunity to purchase a substantial property, the plot is private and secure, a very special property for the discerning client.

Community Fees: 250 €/Month – Garbage: 180 €/Year – IBI: 6.500 €/Year



+34 951 123 083 | +44 (0)330 179 8687 | [info@idiliqestates.com](mailto:info@idiliqestates.com) Local 28, Edificio D, Centro de Negocios Puerta de Banús, N-340, Km 175, 29660 Nueva Andalucía

# IDILIQ

ESTATES

